

SUPER BOWL LIX HALFTIME SHOW

EXPLAINED...



2025 GRAMMYS

ONE WEEK PRIOR TO LIX



SUPER BOWL LIX HALFTIME SHOW

EXPLAINED



SUPER BOWL LIX HALFTIME SHOW

EXPLAINED



SUPER BOWL LIX HALFTIME SHOW

EXPLAINED



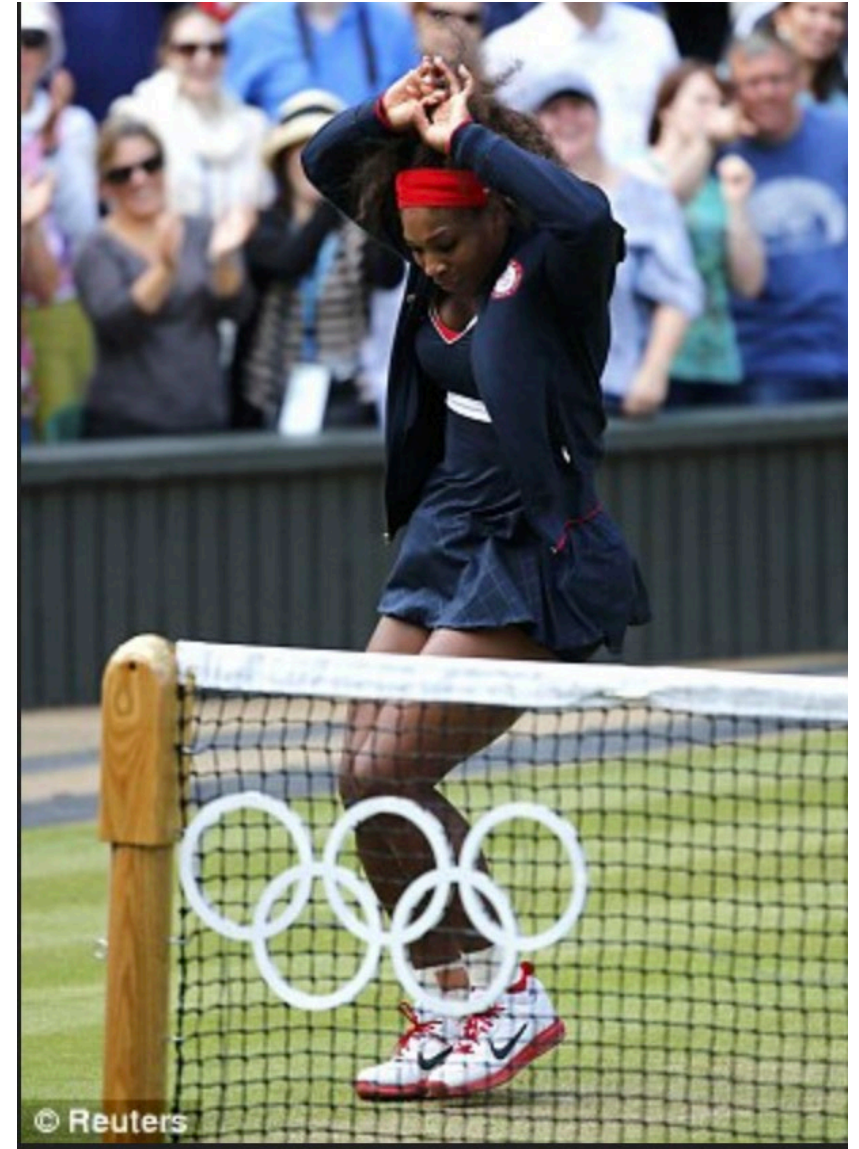
SUPER BOWL LIX HALFTIME SHOW

EXPLAINED



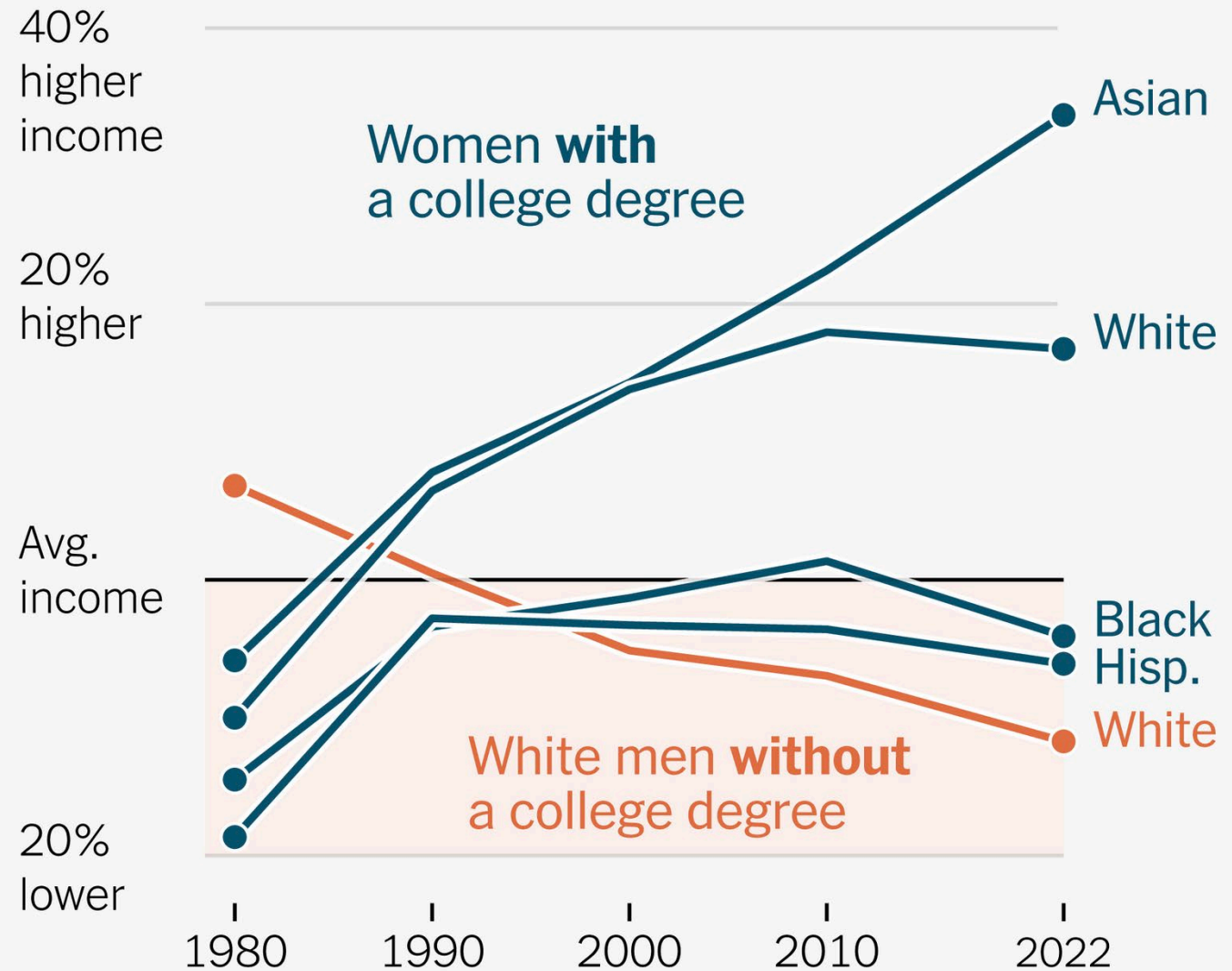
SUPER BOWL LIX HALFTIME SHOW

EXPLAINED



THE REASON FOR THE ORANGE SHOW...

**Relative income
of full-time
U.S. workers**





WHAT IS ENVIRONMENTAL JUSTICE?



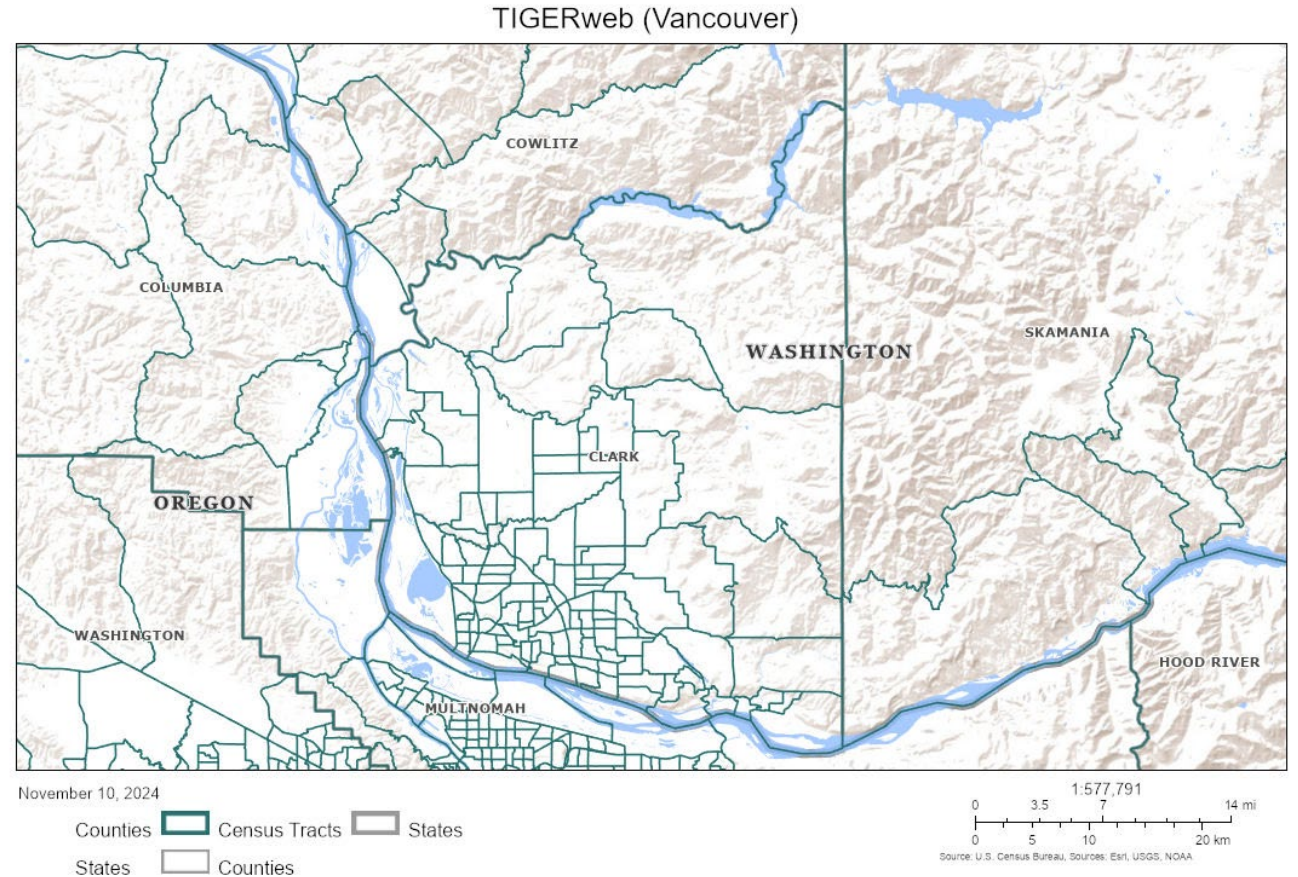
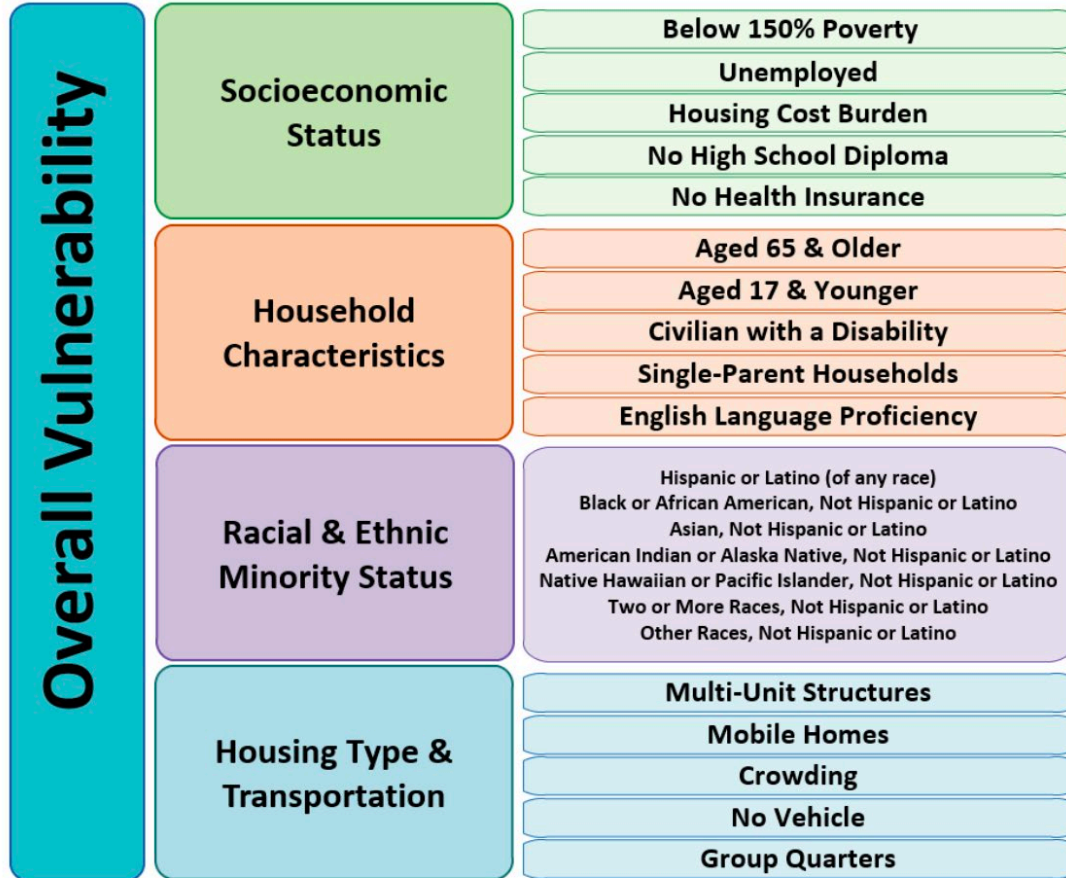
EPA (Environmental Protection Agency), 1994

The **fair treatment and meaningful involvement** of all people regardless of race, color, national origin, or income with respect to the development, implementation, and enforcement of environmental laws, regulations, and policies.

Fair treatment means that **no population**, due to policy or economic disempowerment, **is forced to bear a disproportionate share of the negative human health or environmental impacts of pollution** or environmental consequences resulting from industrial, municipal, and commercial operations or the execution of federal, state, local and tribal programs and policies.

WHAT IS SOCIAL VULNERABILITY?

American Community Survey (ACS), 2016-2020 (5-year) data for the following estimates:





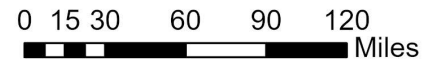
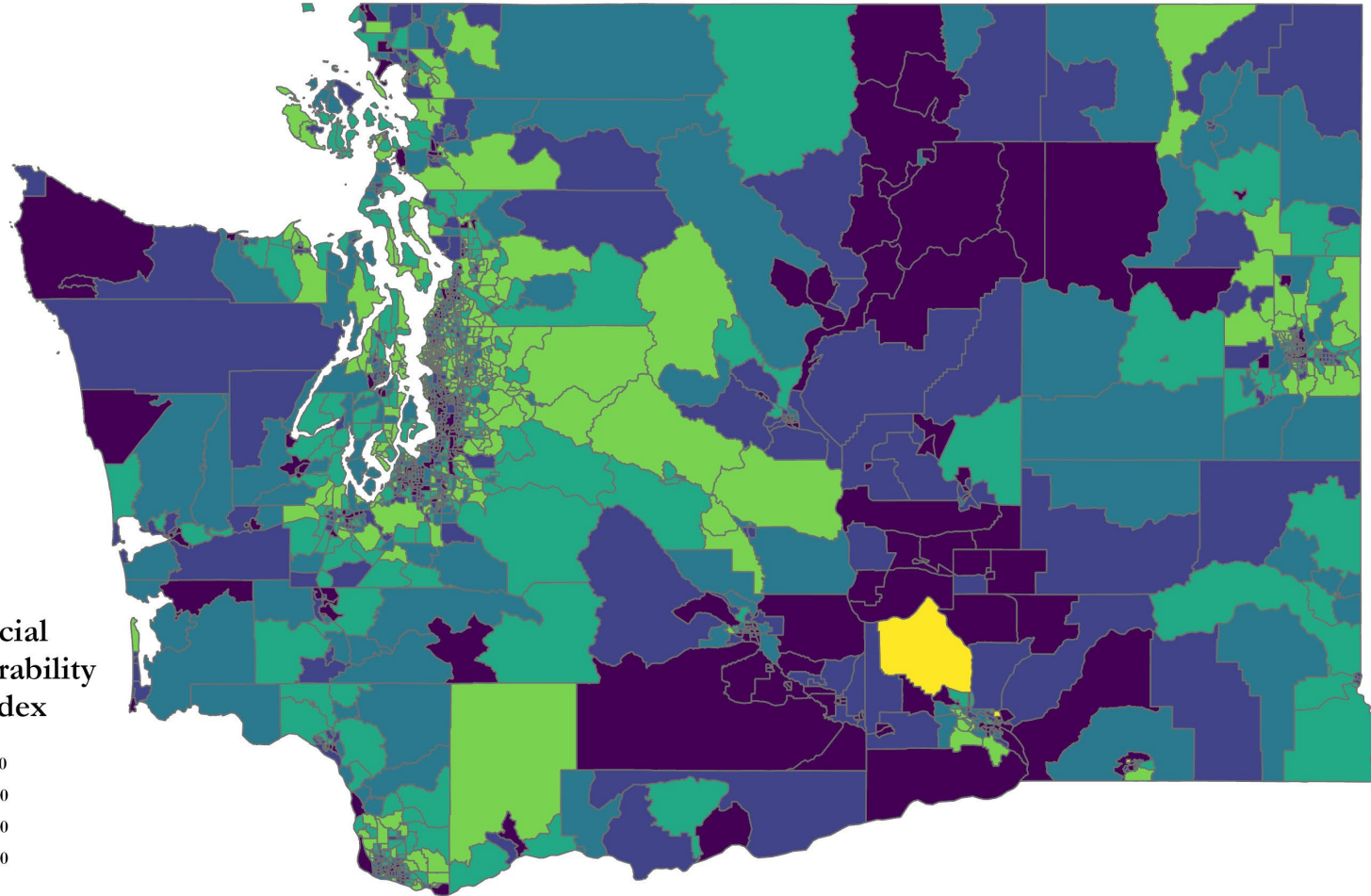
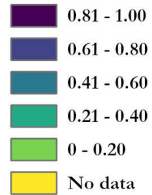
State of Washington

Social Vulnerability Index (Census Tract) 2022

Dr Leslie P. King, Cartographer

December 2024

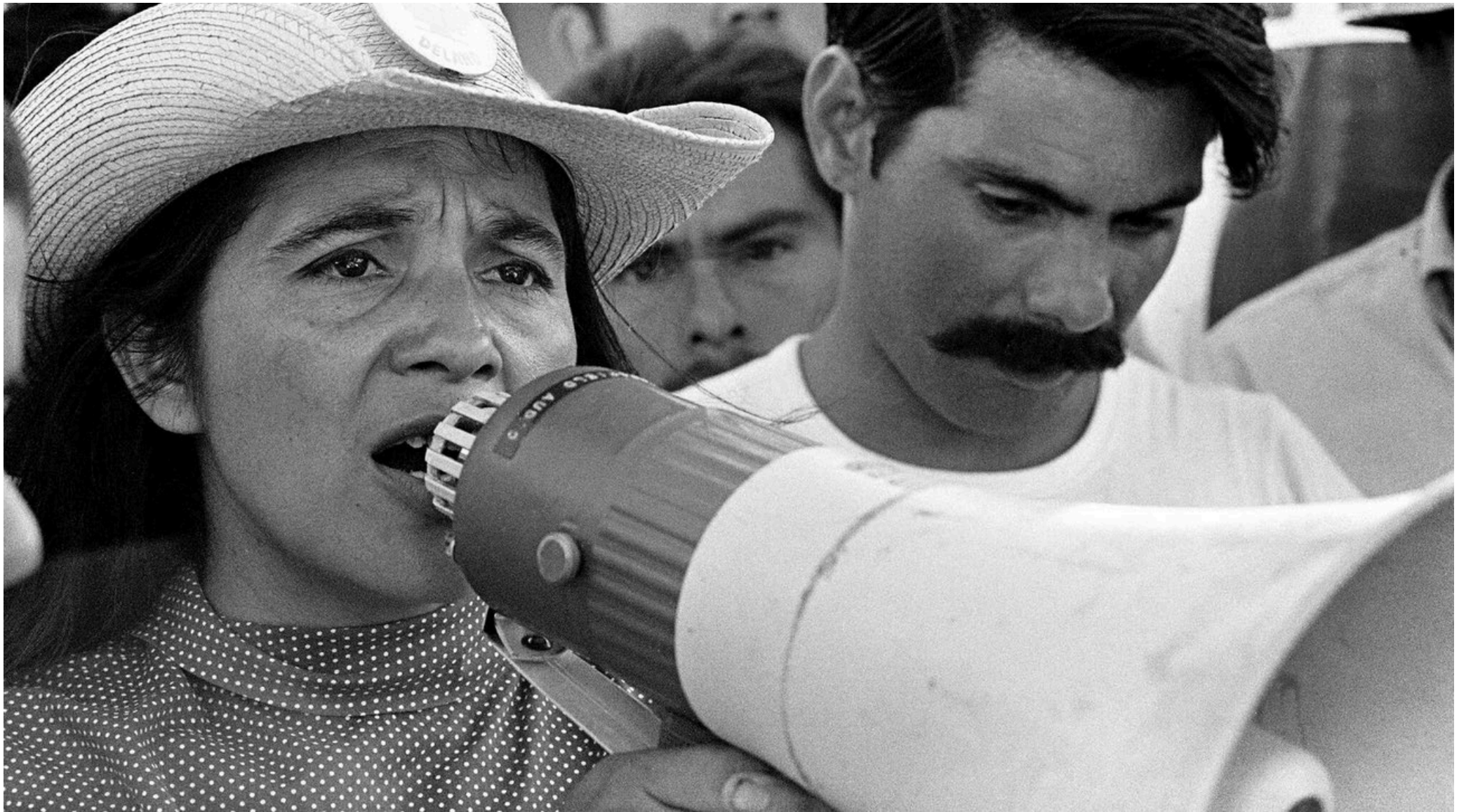
**Social
Vulnerability
Index**



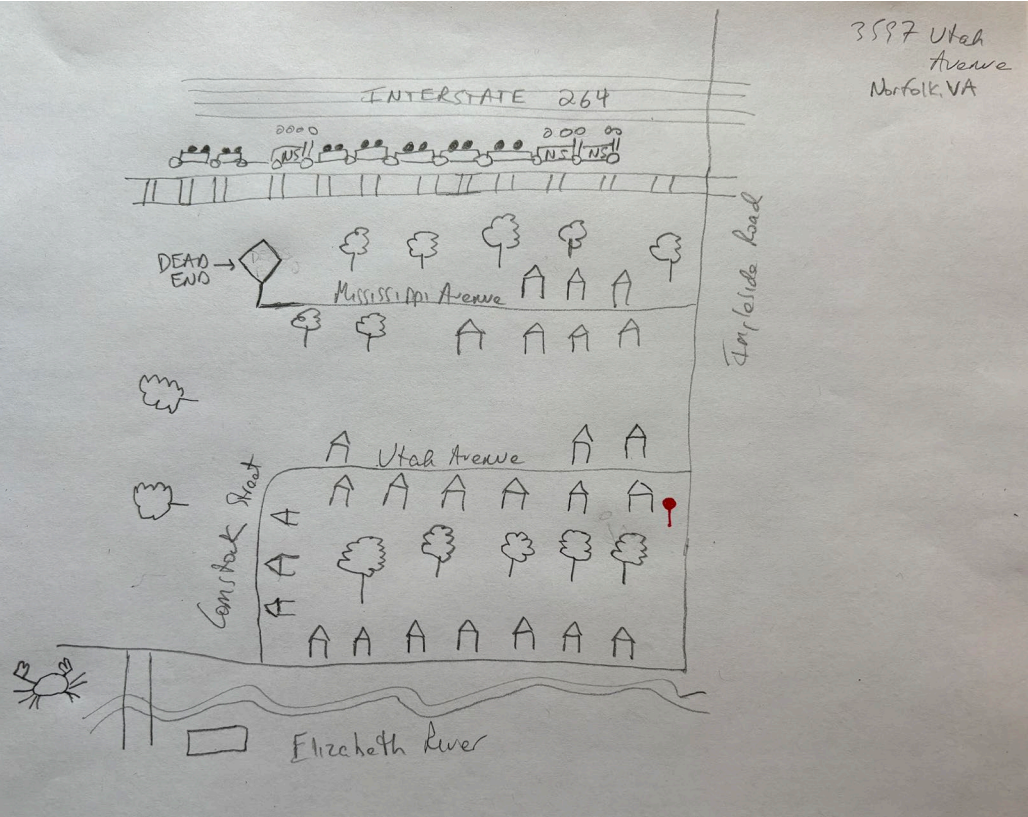


**HAZARDOUS
CHEMICALS**

**UNAUTHORIZED
ENTRY
PROHIBITED**



<https://www.youtube.com/watch?v=REHiLryR1oE>





Portland

LOWER ALBINA
1948

 Black-occupied dwellings, 1950

Willamette River





Vanport City Vacation School, August 1943. Oregon Historical Society, Neg. OrHi 78867. The Oregonian







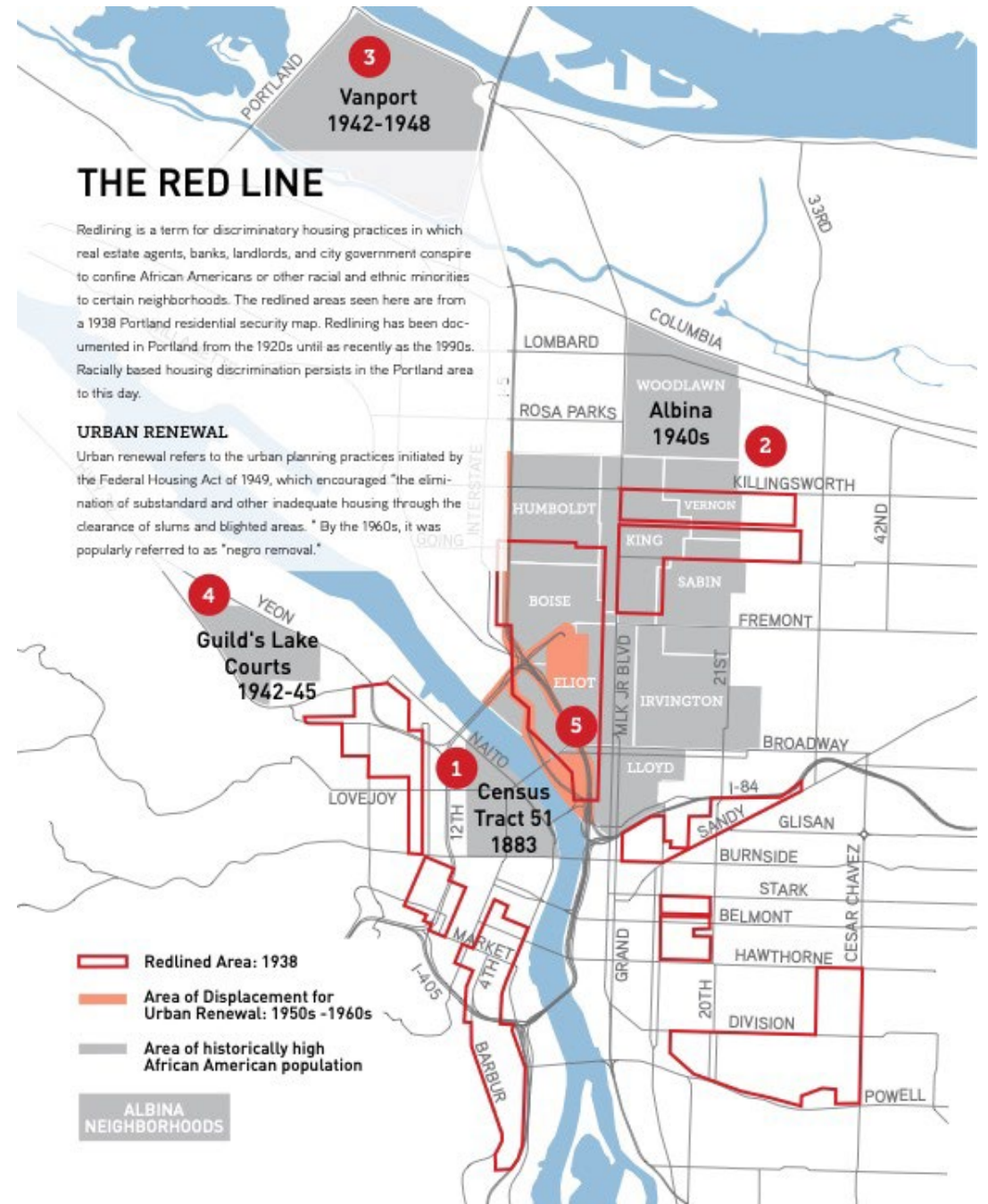
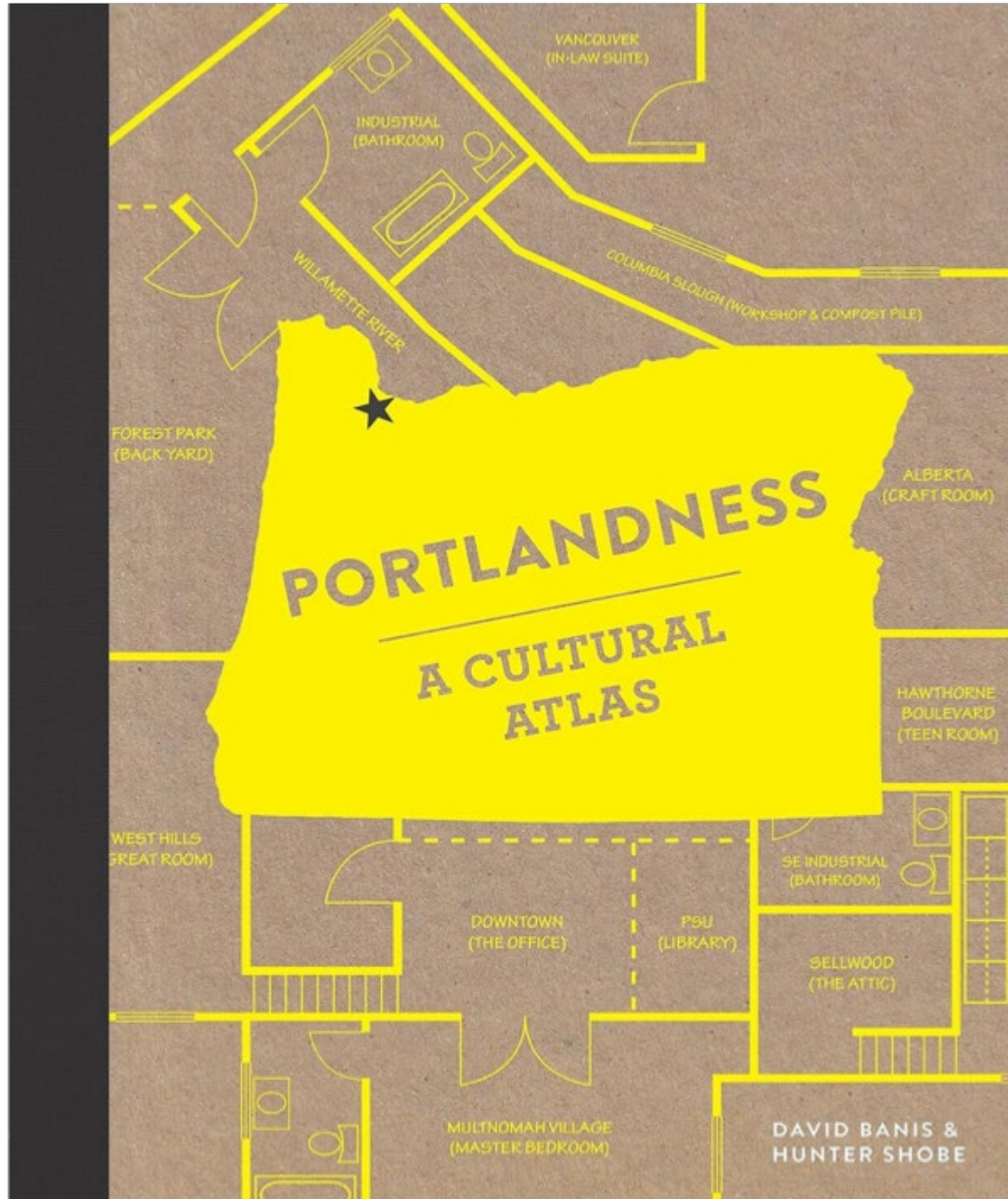




In the heart of the Albina district, the corner of North Williams and North Russell was once the center of a small yet thriving business district. These businesses were torn down in the early 1970s as part of large-scale urban renewal projects. Photo circa 1962.









Popular

Latest

Newsletters

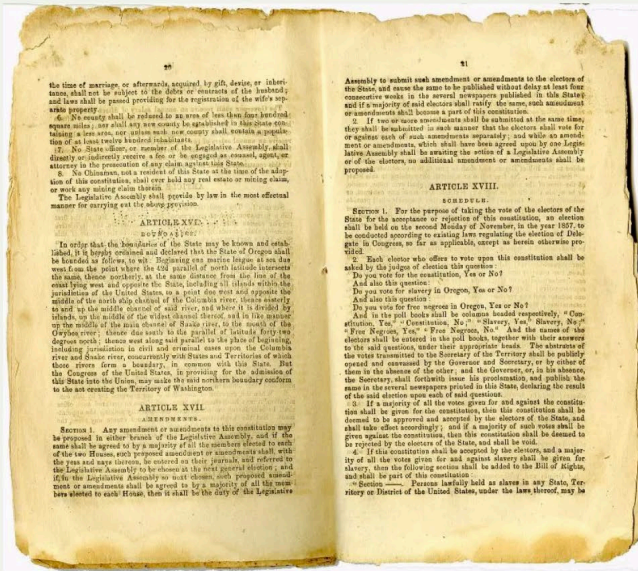
Sign In

The Racist History of Portland, the Whitest City in America

It's known as a modern-day hub of progressivism, but its past is one of exclusion.

By Alana Semuels





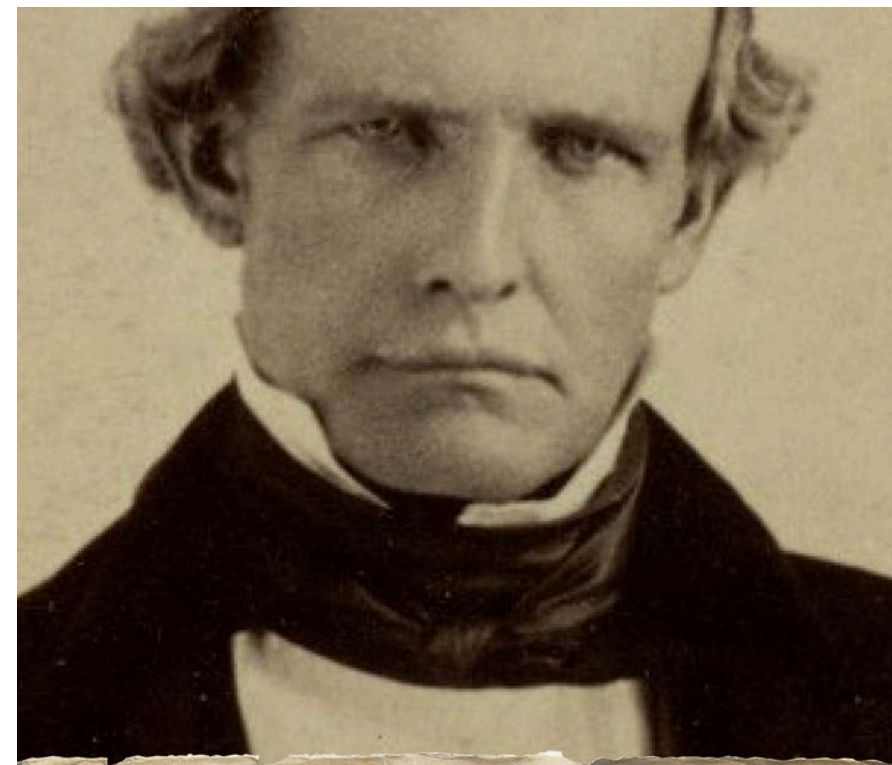
• Article XVIII, from the State Constitution. Section of Oregon State Constitution outlining slavery and exclusion laws, from the 1857 document distributed to Oregonians. Courtesy Oreg. Hist. Soc. Research Lib., Belknap 295

Oregon's Black Exclusionary Laws

Oregon was founded with three Black exclusionary laws. The first was when Oregon outlawed slavery. The law gave slaveholders two years to remove their male slaves and three years to remove their female slaves. At that point, the free Blacks had to leave Oregon and any free Black who refused to leave would be subject to lashing.

It was called Peters Burnett's Lash Law and the law stated that the lashings had to be no less than 22 times but no more than 39 times. Peter Burnett is quoted as saying, "the object is to keep clear of that most troublesome class of population [Blacks]. We are in a new world, under the most favorable circumstances and we wish to avoid most of those evils that have so much afflicted the United States and other countries."


Again, Oregon passed a law stating that "it shall not be lawful for any negro or mulatto to enter into, or reside" in Oregon. Finally, when Oregon became a state it included in its Bill of Rights a clause that prohibited Blacks from being in the state, owning property, and making contracts. Thus, Oregon was the first state to enter into the Union as a "whites only" state.



THE TROUBLED LIFE OF PETER BURNETT

OREGON PIONEER AND
FIRST GOVERNOR OF CALIFORNIA

R. GREGORY NOKES

The background of the slide features a large, semi-transparent seal of the State of Oregon. The seal is circular and contains the text "THE SEAL OF THE STATE OF OREGON" around the perimeter. In the center, there is an eagle with wings spread, perched on a shield. Below the shield are various symbols including a plow, a sheaf of wheat, and a ship. The year "1859" is inscribed at the bottom of the seal.

1844: First of three (3) Black Exclusion Laws, adopted by Oregon Territory

1857: Third Black Exclusion Law, adopted into Constitution at time of 1859 Statehood

1926: Black Exclusion Law rescinded

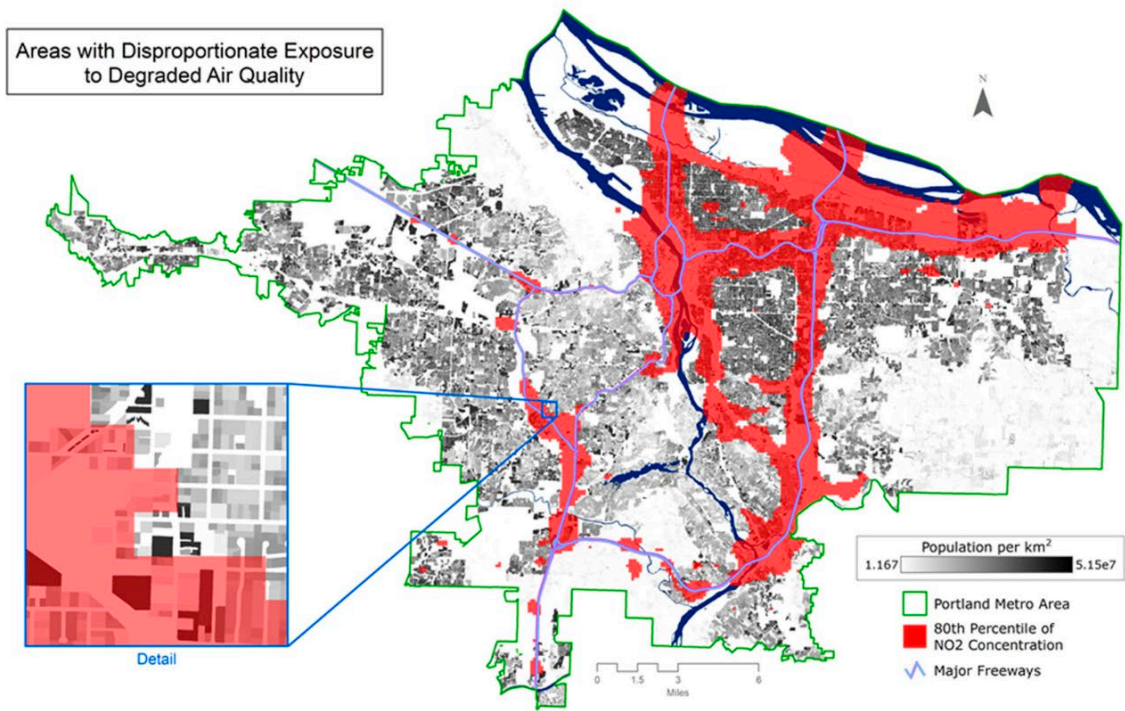
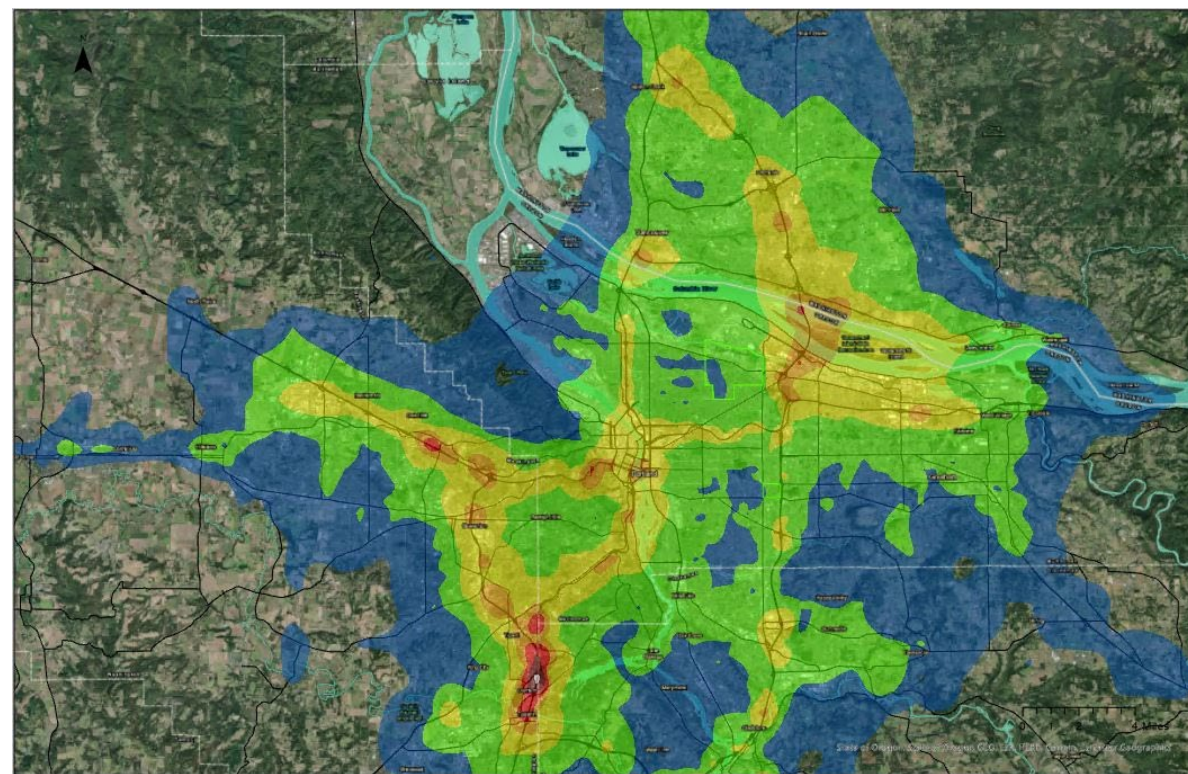
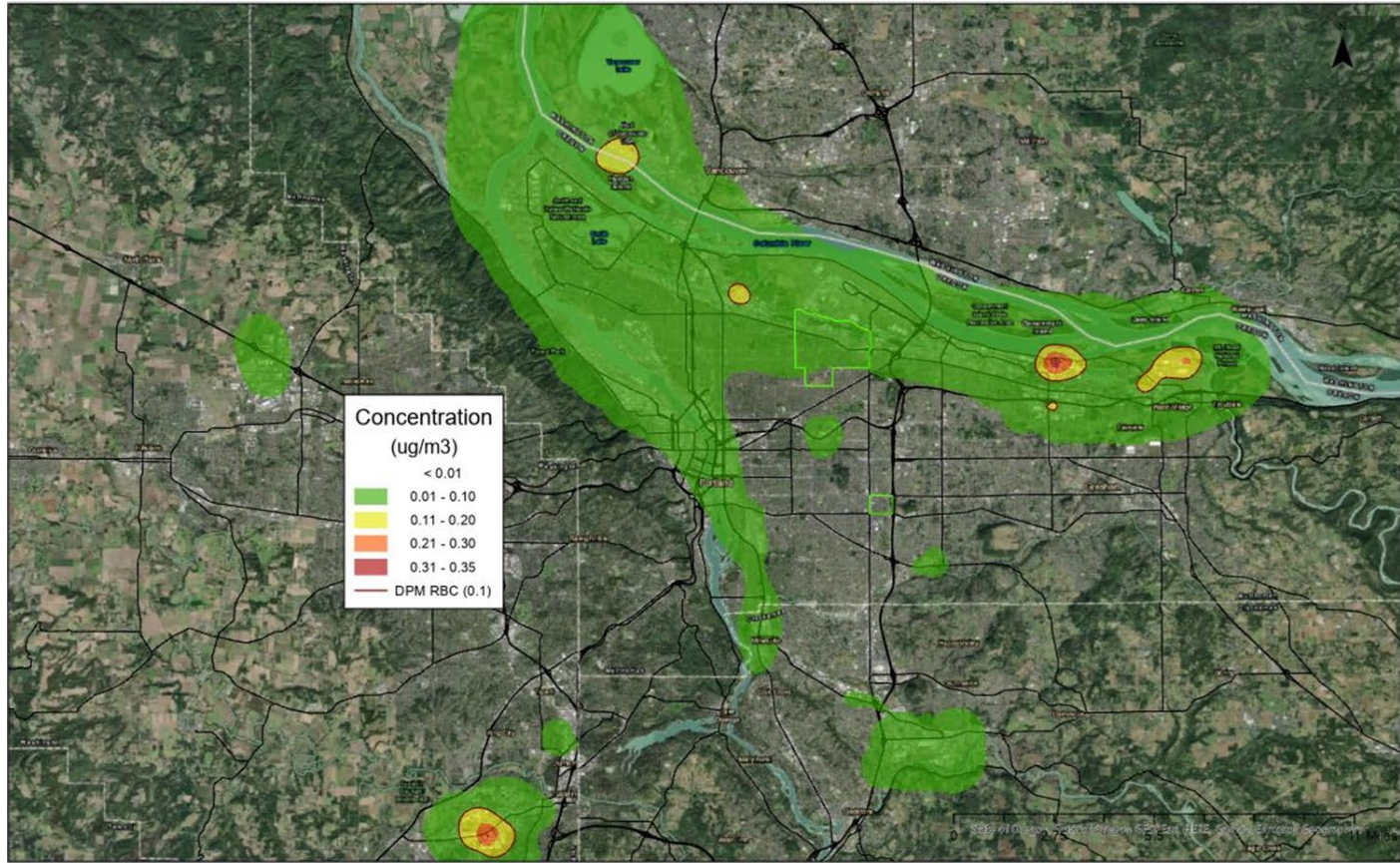


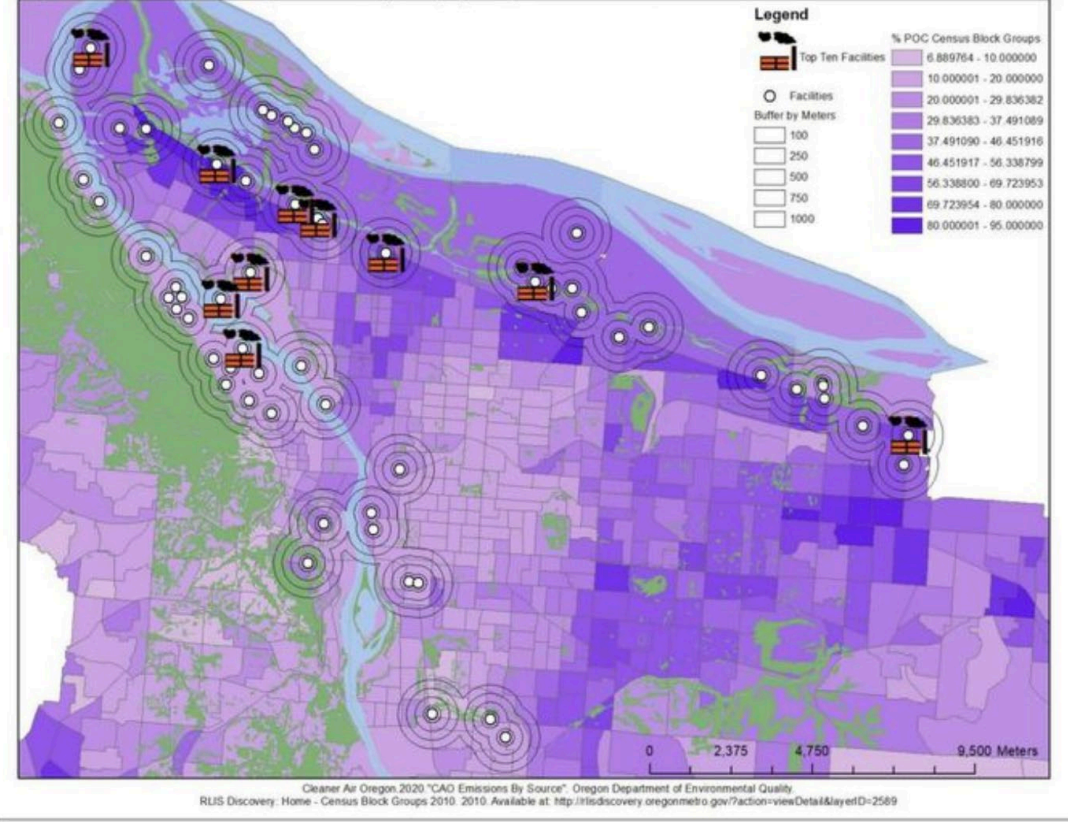
Figure 2. Distribution of the highest concentrations of NO₂ in areas with the greatest number of people.

DPM due to on-road vehicles





Top 10 Facilities and People of Color (POC) by Population Share































Courtesy of the Bureau of Reclamation





**THE KLAMATH TRIBES:
KLAMATH | MODOC | YAHOSKIN**



TERMINATION

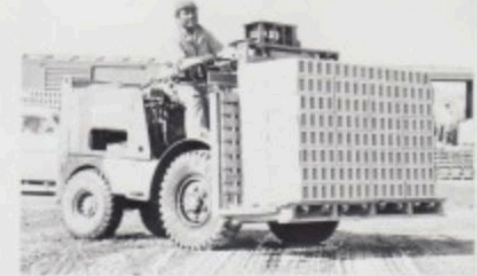
- Beginning in 1953, Congress seeks to abolish tribes and relocate American Indians.
- Congress passes a resolution beginning a federal policy of termination in 1954, through which American Indian tribes will be disbanded and their land sold.
- The companion policy of *relocation* moves Indians off of reservations and into urban areas.

COME TO DENVER.

THE CHANCE OF YOUR LIFETIME !

Good Jobs

Retail Trade
Manufacturing
Government-Federal, State, Local
Wholesale Trade
Construction of Buildings, Etc.



Happy Homes

Beautiful Houses
Many Churches
Exciting Community Life
Over Half of Homes Owned by Residents
Convenient Stores-Shopping Centers

Training

Vocational Training
Auto Mech, Beauty Shop, Drafting,
Nursing, Office Work, Watchmaking
Adult Education
Evening High School, Arts and Crafts
Job Improvement, Home-making



Beautiful Colorado

Tallest State, 48 Mt. Peaks Over 14,000 Ft.
350 Days Sunshine, Mild Winters
Zoos, Museums, Mountain Parks, Drives
Picnic Areas, Lakes, Amusement Parks
Big Game Hunting, Trout Fishing, Camping





RASHID KHALIDI

The U.S. Should Think Twice About Israel's Plans for Gaza

4 MIN READ

THOMAS L. FRIEDMAN

Why Israel Is Acting This Way

6 MIN READ



DAVID FRENCH

The Moral Questions at the Heart of the Gaza War

5 MIN READ



WENDY MACNAUGHTON

The Importance of Looking at What (and Who) You Don't See

1 MIN READ



BRAIDING SWEETGRASS

INDIGENOUS WISDOM, SCIENTIFIC KNOWLEDGE,
AND THE TEACHINGS OF PLANTS

A NEW ORIGIN STORY

The 1619 Project

WHITE FRAGILITY



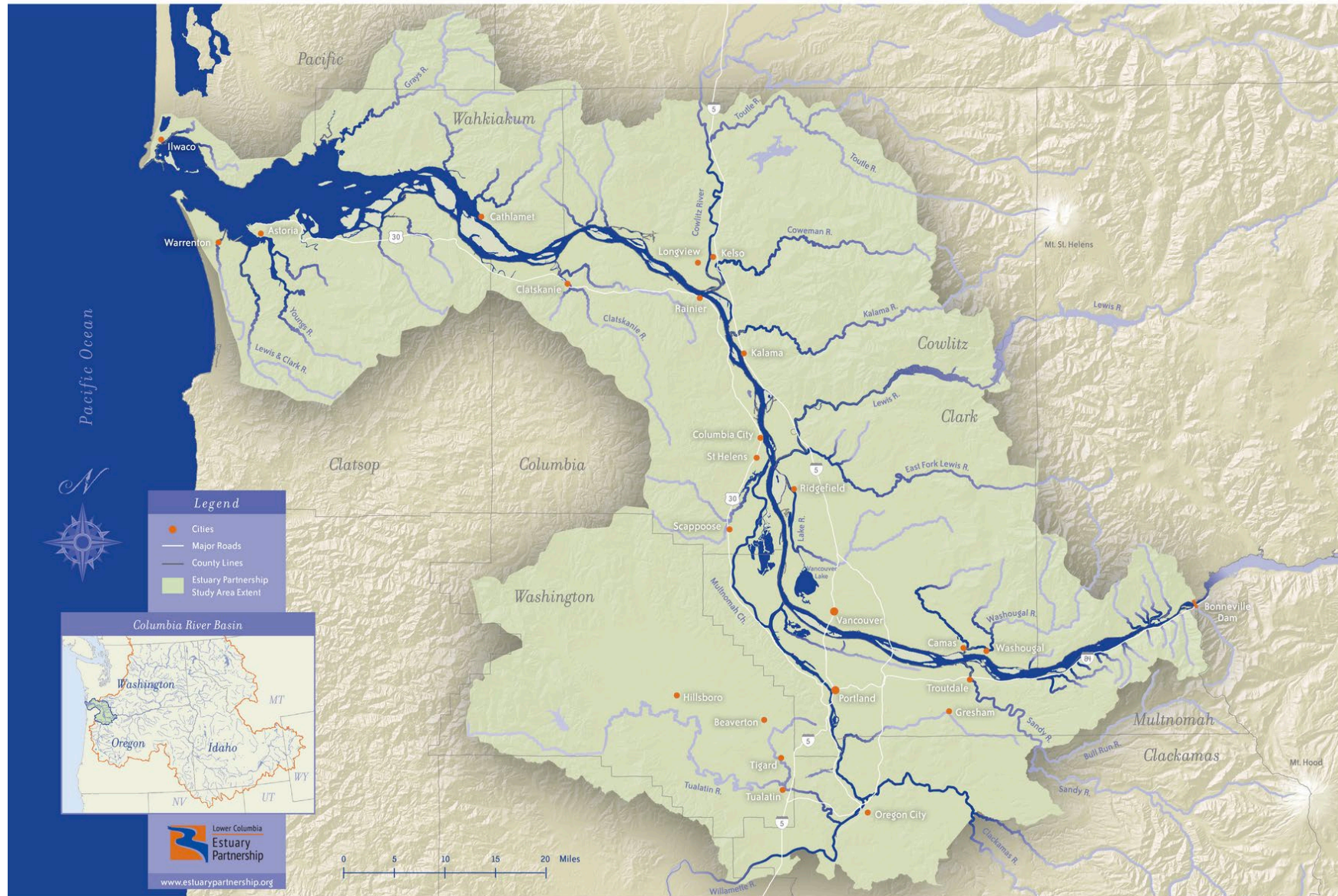
THE GOOD NEWS!!

- 1) BIASES ARE MALLEABLE
- 2) BIASES CAN BE UNLEARNED
- 3) BIASES CAN BE REPLACED



Lower Columbia River and Estuary

LOWER COLUMBIA ESTUARY PARTNERSHIP STUDY AREA



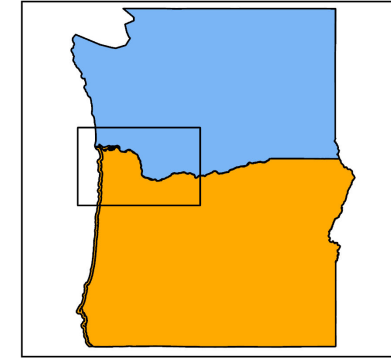


The Lower Columbia Estuary Partnership

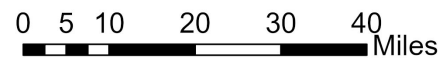
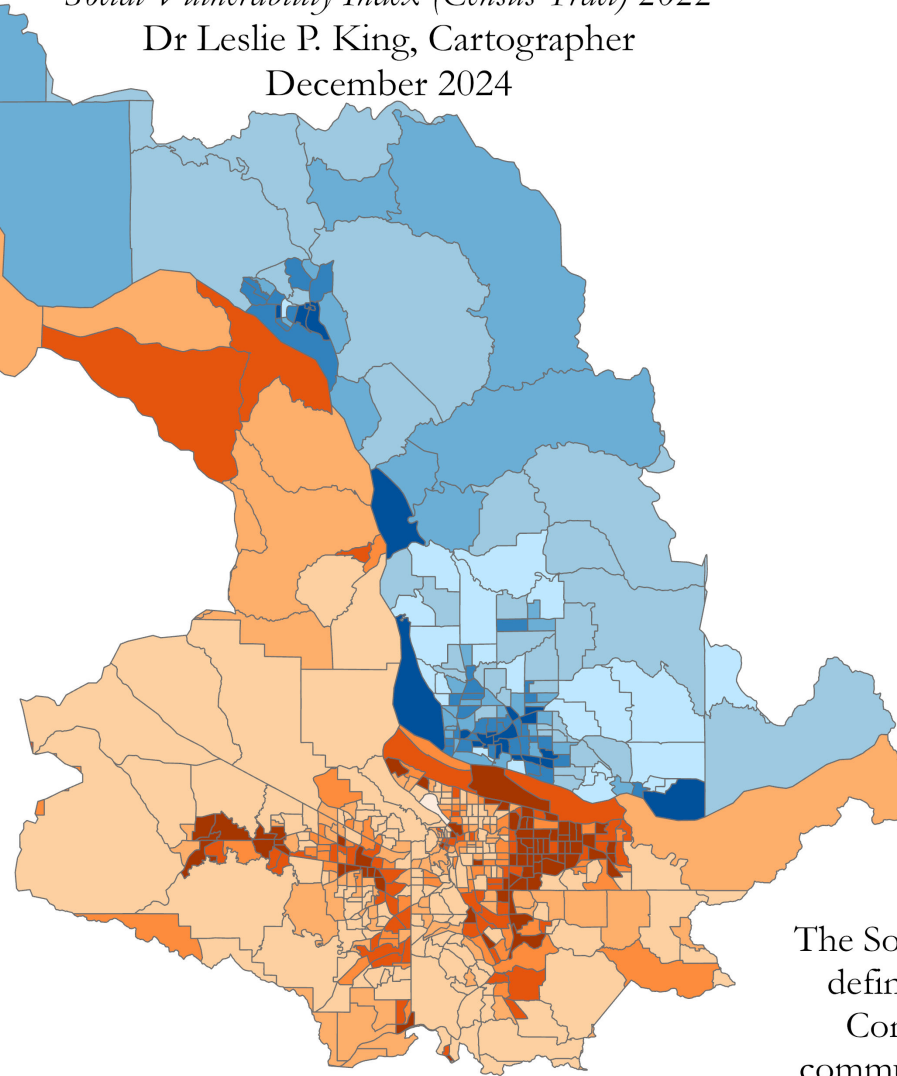
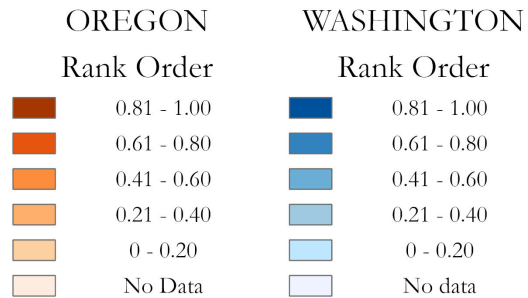
Social Vulnerability Index (Census Tract) 2022

Dr Leslie P. King, Cartographer

December 2024



Social Vulnerability Index



The Social Vulnerability Index (SVI) as defined by the Centers for Disease Control is the degree to which a community exhibits certain conditions that affect its ability to prevent human suffering and financial loss in the event of a disaster

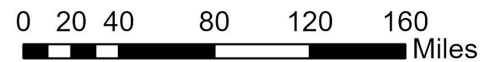
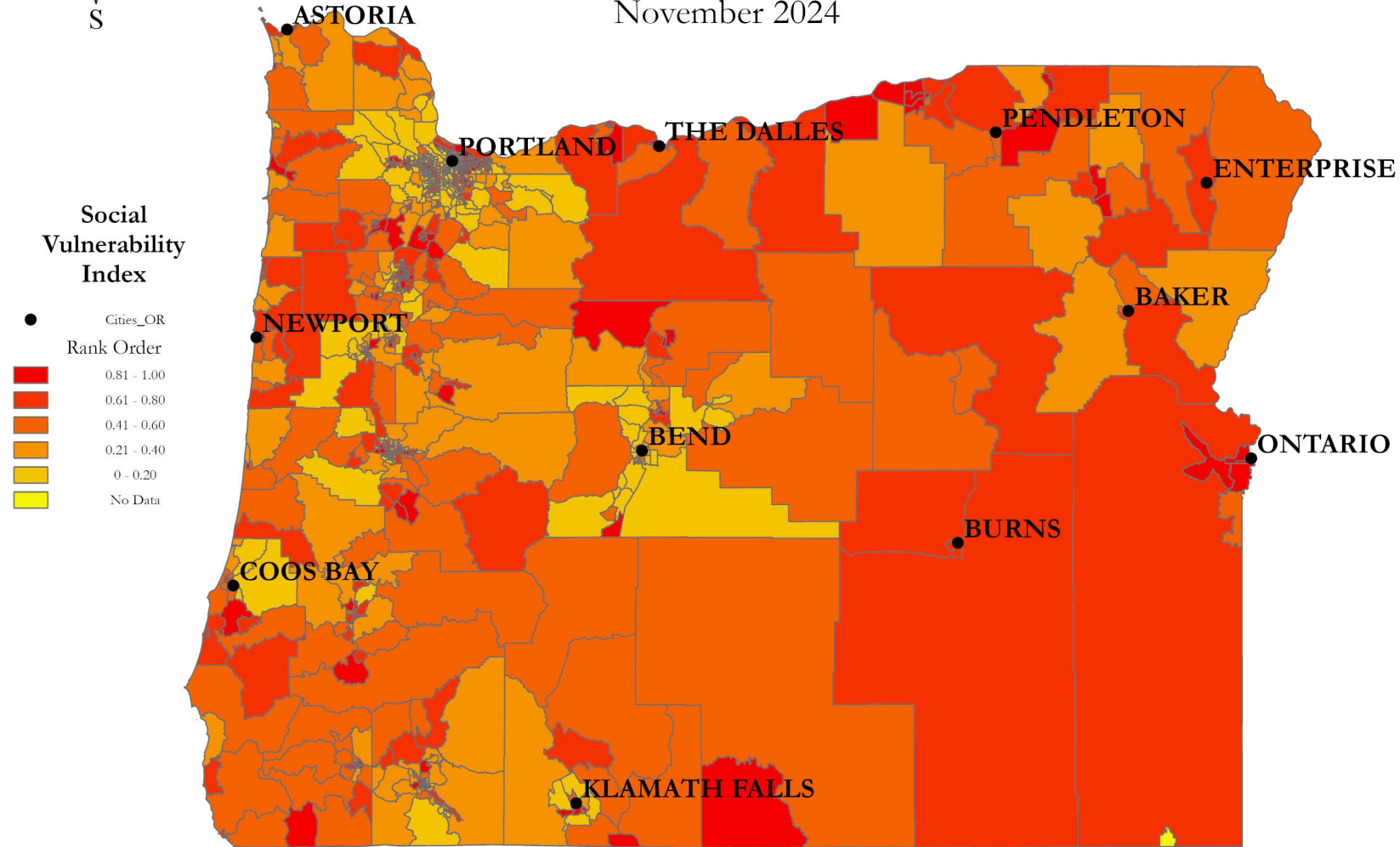


State of Oregon

Social Vulnerability Index (Census Tract) 2022

Dr. Leslie P. King, Cartographer

November 2024









In these days of difficulty, we Americans everywhere must and shall chose the path of social justice, the path of faith, the path of hope, and the path of love toward our fellow man.

Men and nature must work hand in hand. The throwing out of balance of the resources of nature throws out of balance also the lives of men.

Franklin Delano Roosevelt
32nd President of the United States

