



What is Social Vulnerability?

CDC (Centers for Disease Control)

ATSDR (Agency for Toxic Substance & Disease Registry)

GRASP (Geospatial Research, Analysis & Services Program)

American Community Survey (ACS), 2016-2020 (5-year) data for the following estimates:

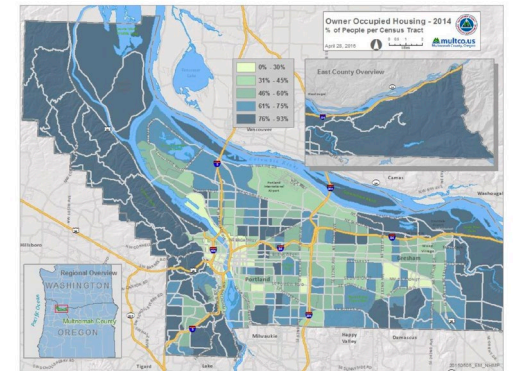
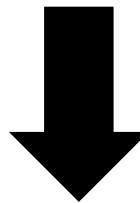
Overall Vulnerability	Socioeconomic Status	<ul style="list-style-type: none">Below 150% PovertyUnemployedHousing Cost BurdenNo High School DiplomaNo Health Insurance
	Household Characteristics	<ul style="list-style-type: none">Aged 65 & OlderAged 17 & YoungerCivilian with a DisabilitySingle-Parent HouseholdsEnglish Language Proficiency
	Racial & Ethnic Minority Status	<ul style="list-style-type: none">Hispanic or Latino (of any race)Black or African American, Not Hispanic or LatinoAsian, Not Hispanic or LatinoAmerican Indian or Alaska Native, Not Hispanic or LatinoNative Hawaiian or Pacific Islander, Not Hispanic or LatinoTwo or More Races, Not Hispanic or LatinoOther Races, Not Hispanic or Latino
	Housing Type & Transportation	<ul style="list-style-type: none">Multi-Unit StructuresMobile HomesCrowdingNo VehicleGroup Quarters

SVI (Social Vulnerability Index)



U.S. Census TIGER/Lines

(Topologically Integrated Geographic Encoding & Referencing)





State of Oregon

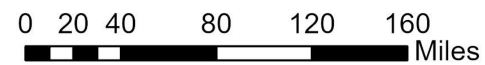
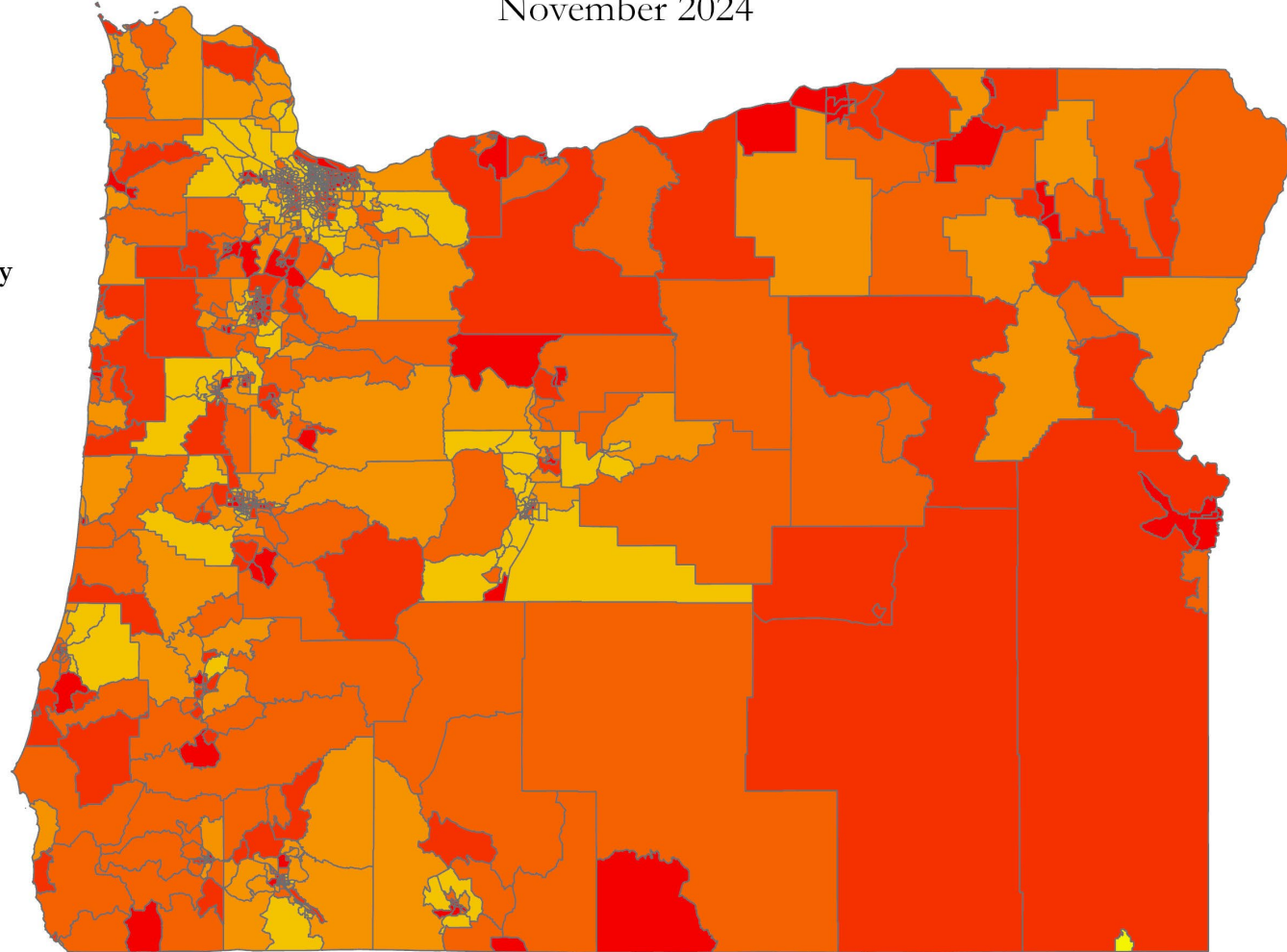
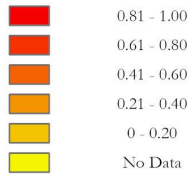
Social Vulnerability Index (Census Tract) 2022

Dr. Leslie P. King, Cartographer

November 2024

Social Vulnerability Index

Rank Order



State of Washington

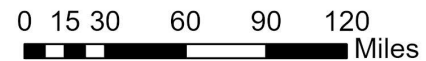
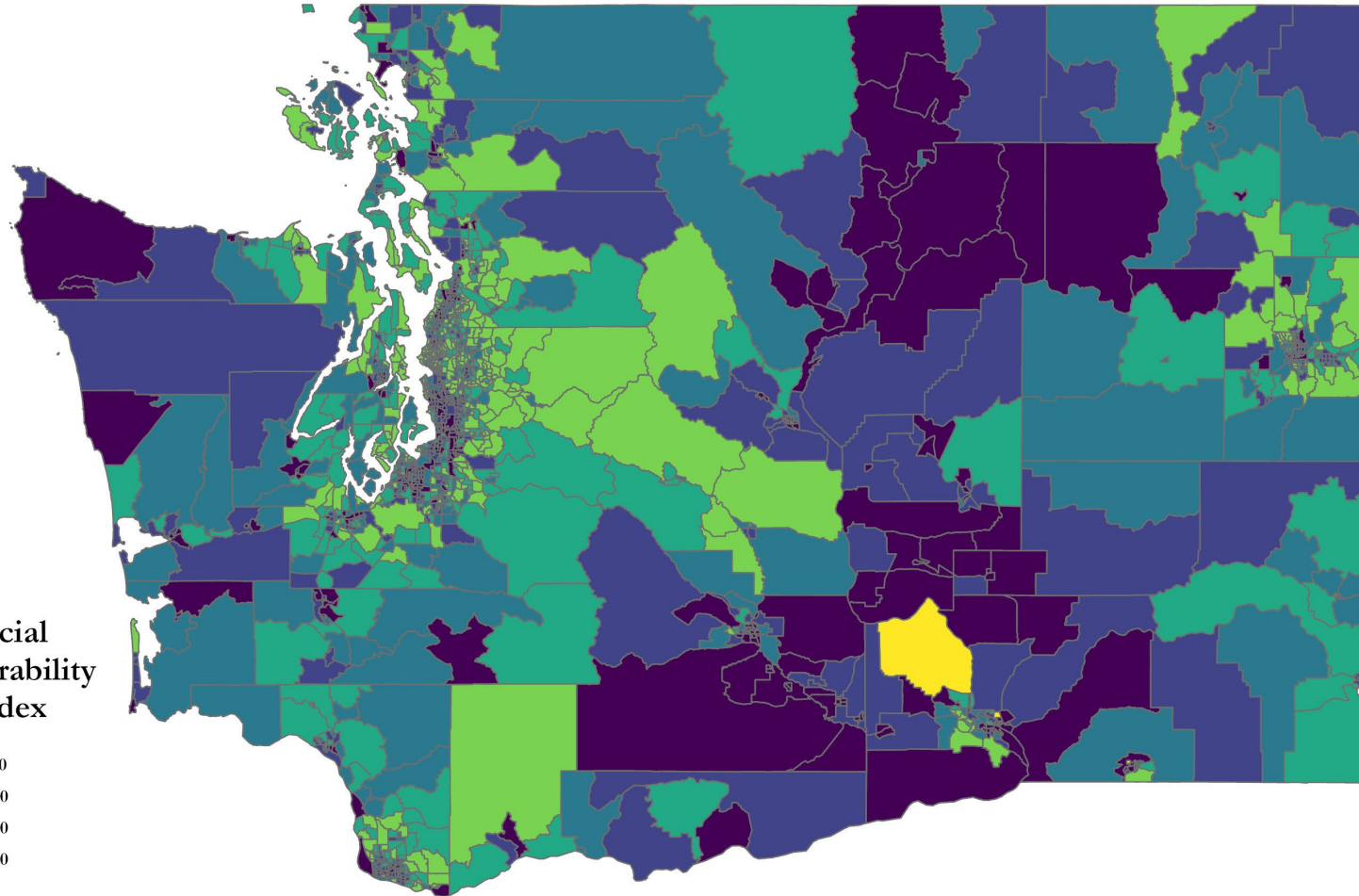
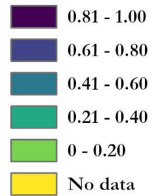
Social Vulnerability Index (Census Tract) 2022

Dr Leslie P. King, Cartographer

December 2024



**Social
Vulnerability
Index**



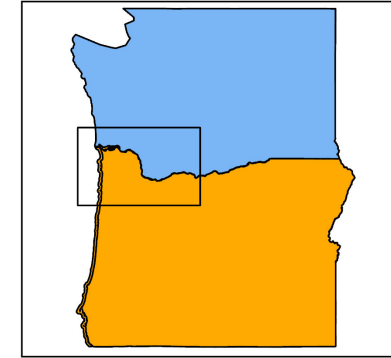


The Lower Columbia Estuary Partnership

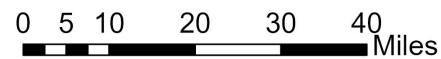
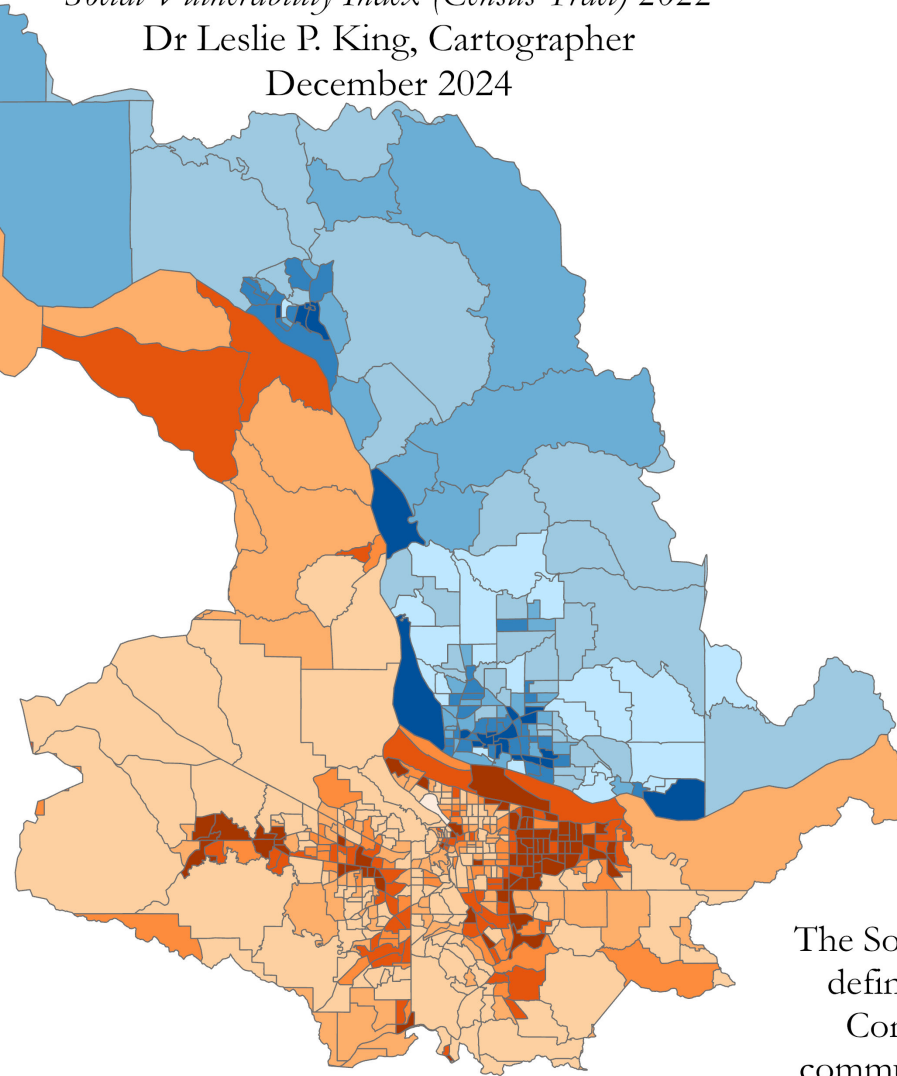
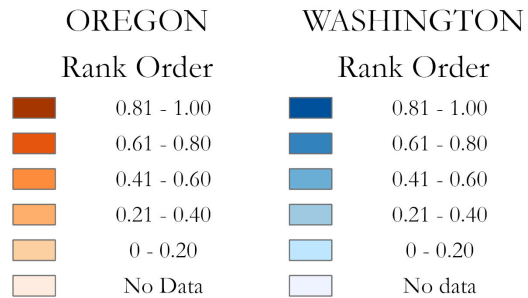
Social Vulnerability Index (Census Tract) 2022

Dr Leslie P. King, Cartographer

December 2024



Social Vulnerability Index



The Social Vulnerability Index (SVI) as defined by the Centers for Disease Control is the degree to which a community exhibits certain conditions that affect its ability to prevent human suffering and financial loss in the event of a disaster

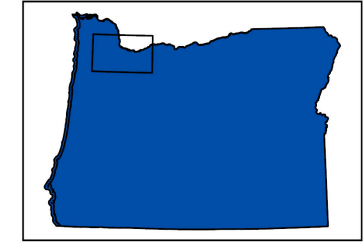


Portland Metro

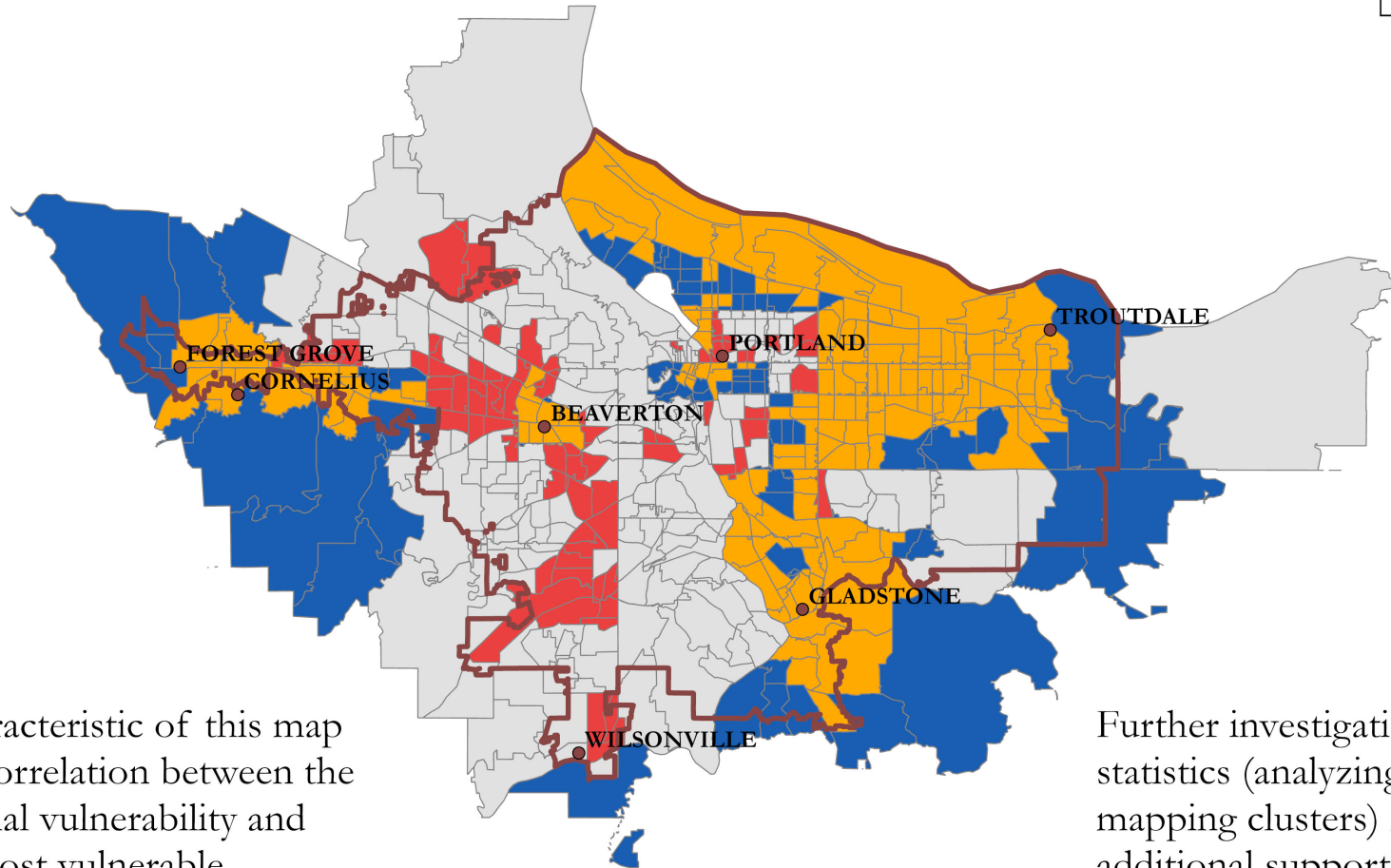
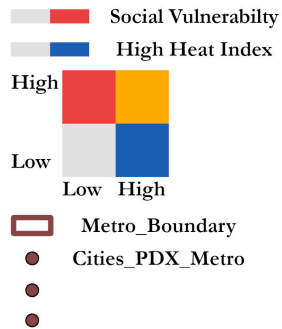
Vulnerability & Heat Indexes (Bivariate)

Dr Leslie P. King, Cartographer

November 2024



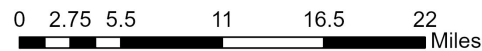
Vulnerability & Heat

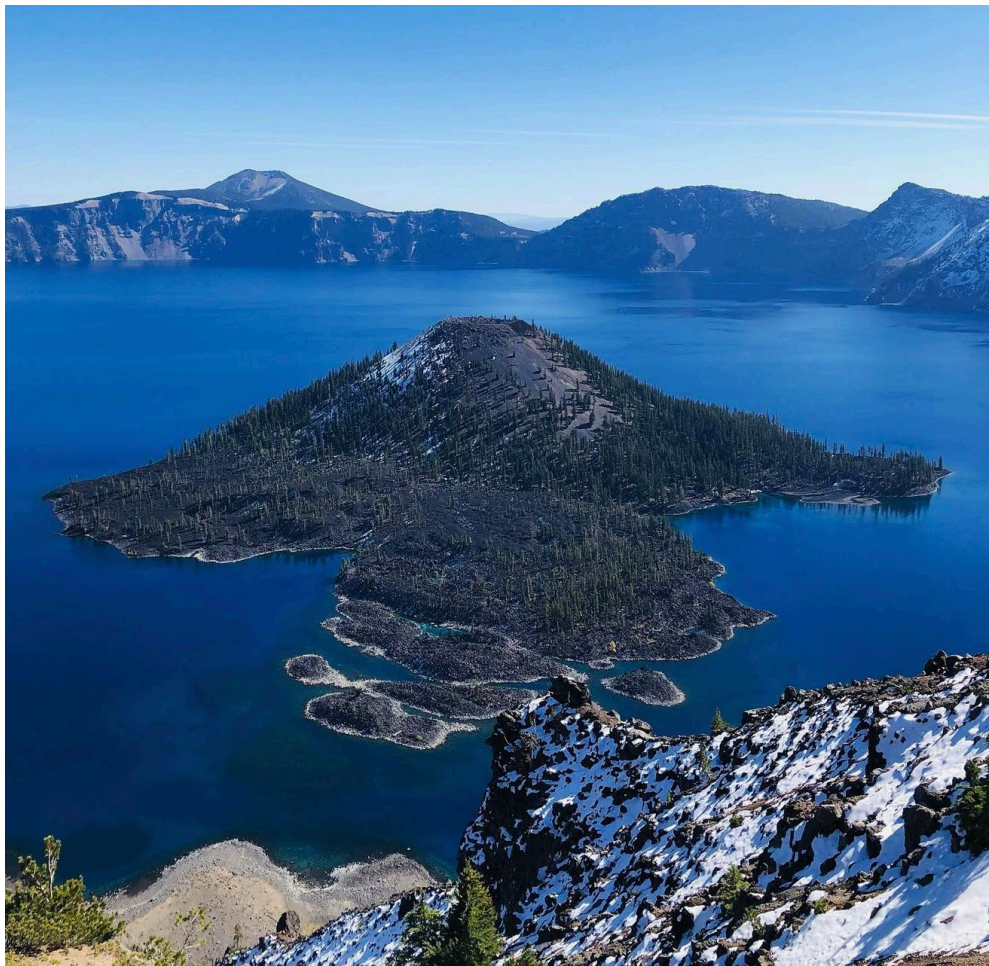


The bivariate characteristic of this map indicates spatial correlation between the two indexes-- social vulnerability and high heat. The most vulnerable populations are the most severely impacted by high heat events.

Further investigation via spatial statistics (analyzing patterns or mapping clusters) may provide additional support.

Overlap: 33%; No Overlap 33%
Vulnerable: 18%; High Heat 18%









**THE KLAMATH TRIBES:
KLAMATH | MODOC | YAHOSKIN**



TERMINATION

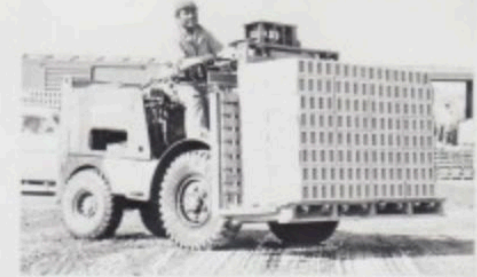
- Beginning in 1953, Congress seeks to abolish tribes and relocate American Indians.
- Congress passes a resolution beginning a federal policy of termination in 1954, through which American Indian tribes will be disbanded and their land sold.
- The companion policy of *relocation* moves Indians off of reservations and into urban areas.

COME TO DENVER.

THE CHANCE OF YOUR LIFETIME !

Good Jobs

Retail Trade
Manufacturing
Government-Federal, State, Local
Wholesale Trade
Construction of Buildings, Etc.



Happy Homes

Beautiful Houses
Many Churches
Exciting Community Life
Over Half of Homes Owned by Residents
Convenient Stores-Shopping Centers

Training

Vocational Training
AutoMech, Beauty Shop, Drafting,
Nursing, Office Work, Watchmaking
Adult Education
Evening High School, Arts and Crafts
Job Improvement, Home-making



Beautiful Colorado

Tallest State, 48 Mt. Peaks Over 14,000 Ft.
350 Days Sunshine, Mild Winters
Zoos, Museums, Mountain Parks, Drives
Picnic Areas, Lakes, Amusement Parks
Big Game Hunting, Trout Fishing, Camping











Rotary Club of Copco 6-248 7/23-22











Courtesy of the Bureau of Reclamation

















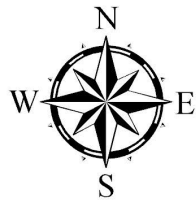
Scoop by scoop, crews from construction company Kiewit are deconstructing the massive earthen barrier that was Iron Gate dam, July 26, 2024.

The North American Megadrought

2000 - ???

- Worst in over 1200 years
- Widespread aridification
- Anthropogenic:
 - Temperature increase
 - Shifted jet stream
 - Altered ocean currents
- Projected to last at least 30 years



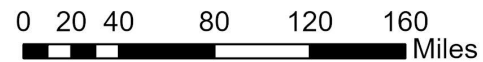
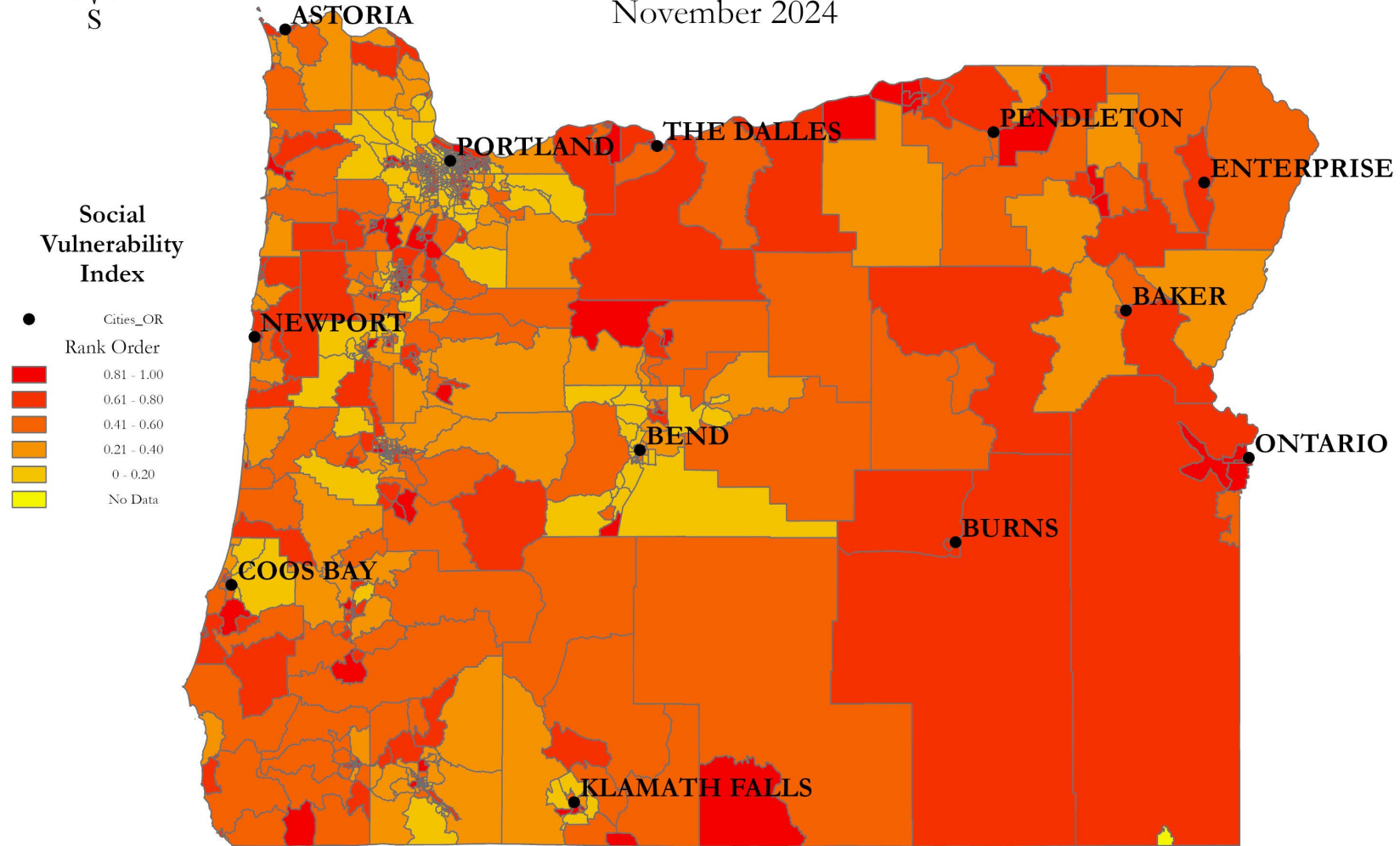


State of Oregon

Social Vulnerability Index (Census Tract) 2022

Dr. Leslie P. King, Cartographer

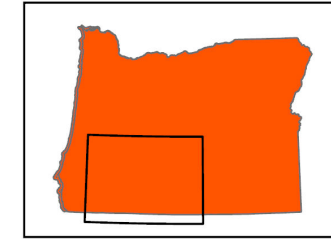
November 2024





The Klamath Basin (Oregon)

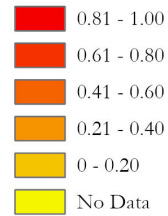
Social Vulnerability Index (Census Tract) 2022
Dr. Leslie P. King, Cartographer
December 2024



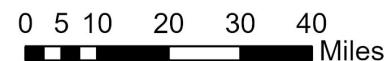
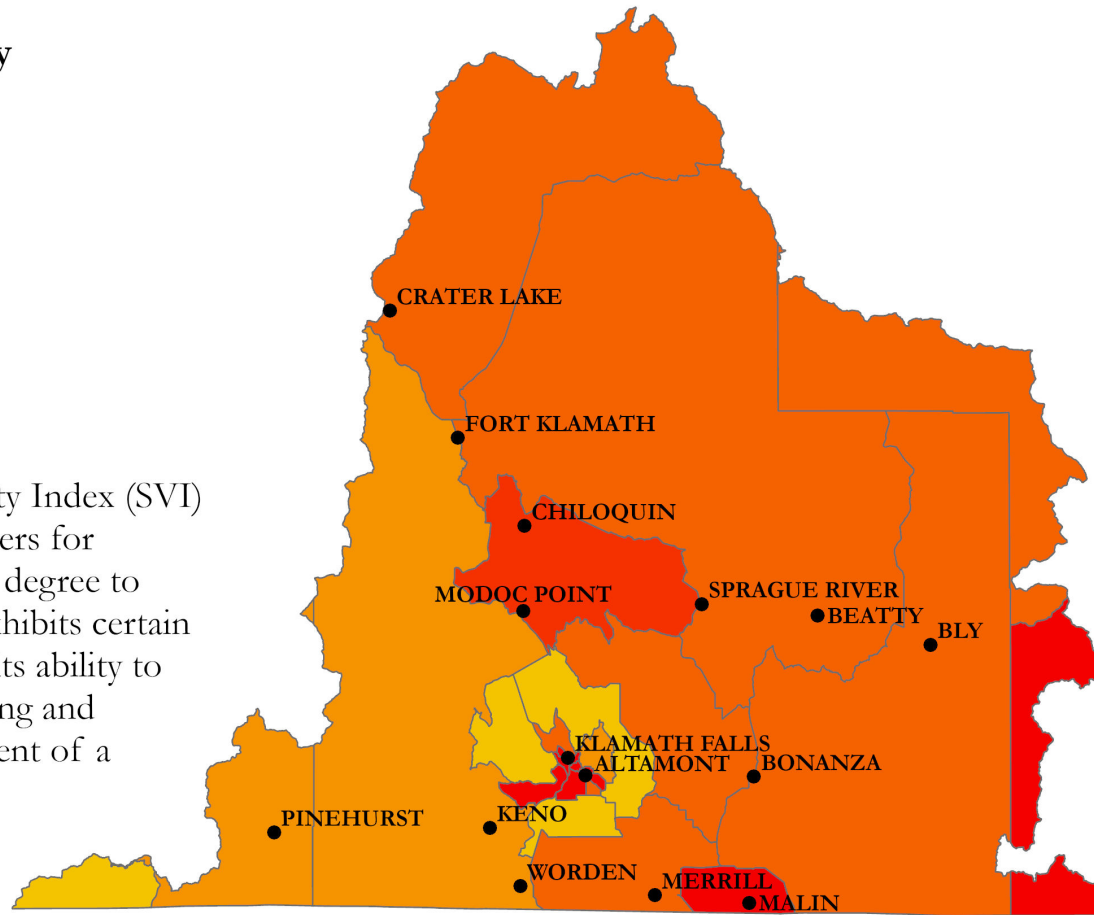
Social Vulnerability Index

● Cities_Klamath

Rank Order

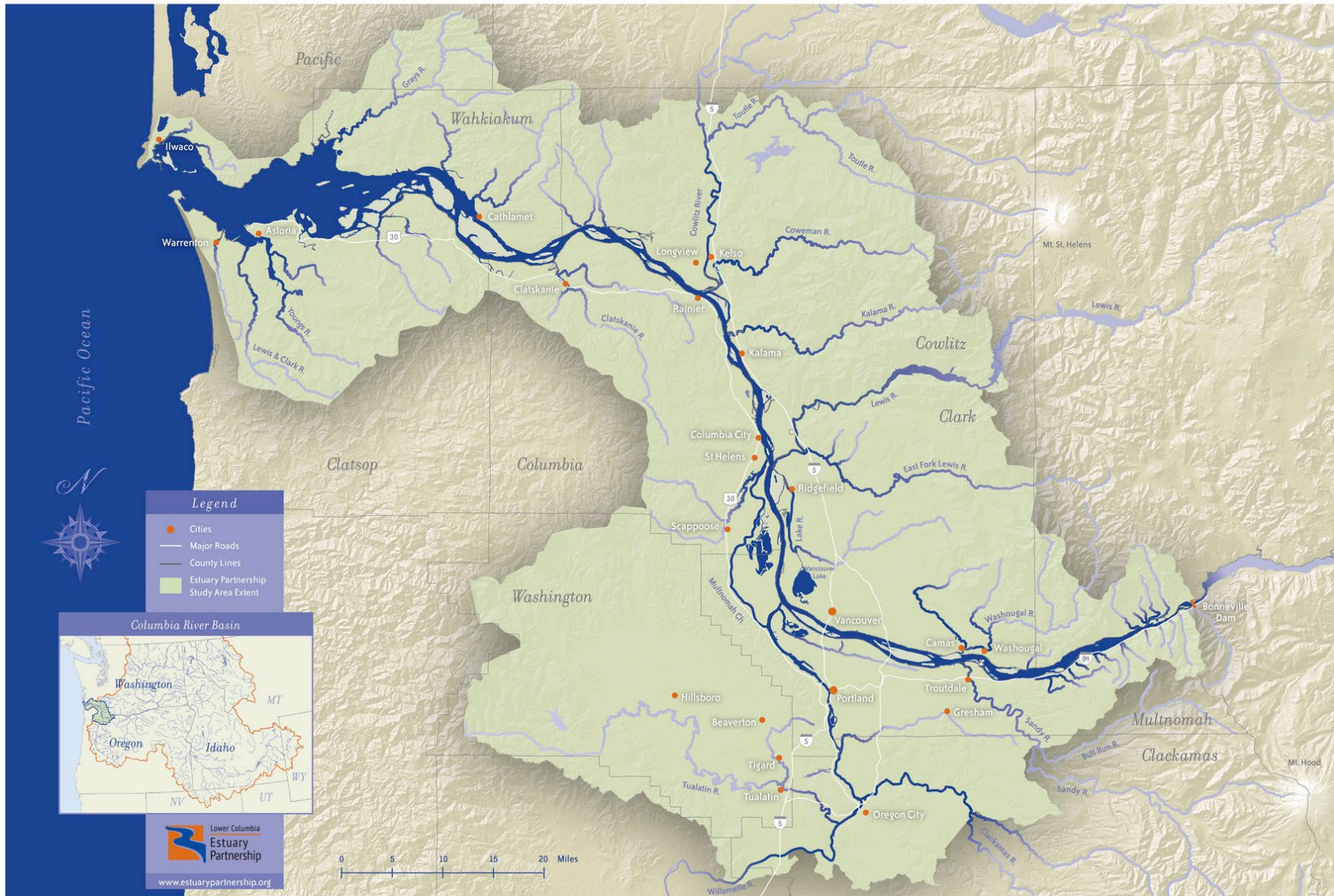


The Social Vulnerability Index (SVI) as defined by the Centers for Disease Control is the degree to which a community exhibits certain conditions that affect its ability to prevent human suffering and financial loss in the event of a disaster



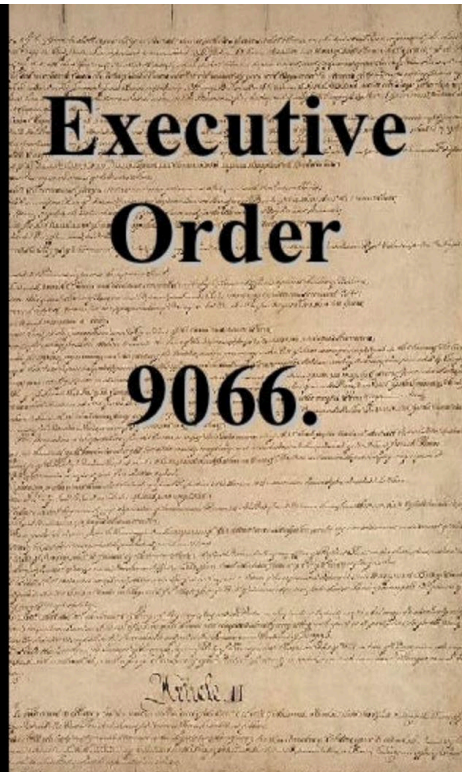
Lower Columbia River and Estuary

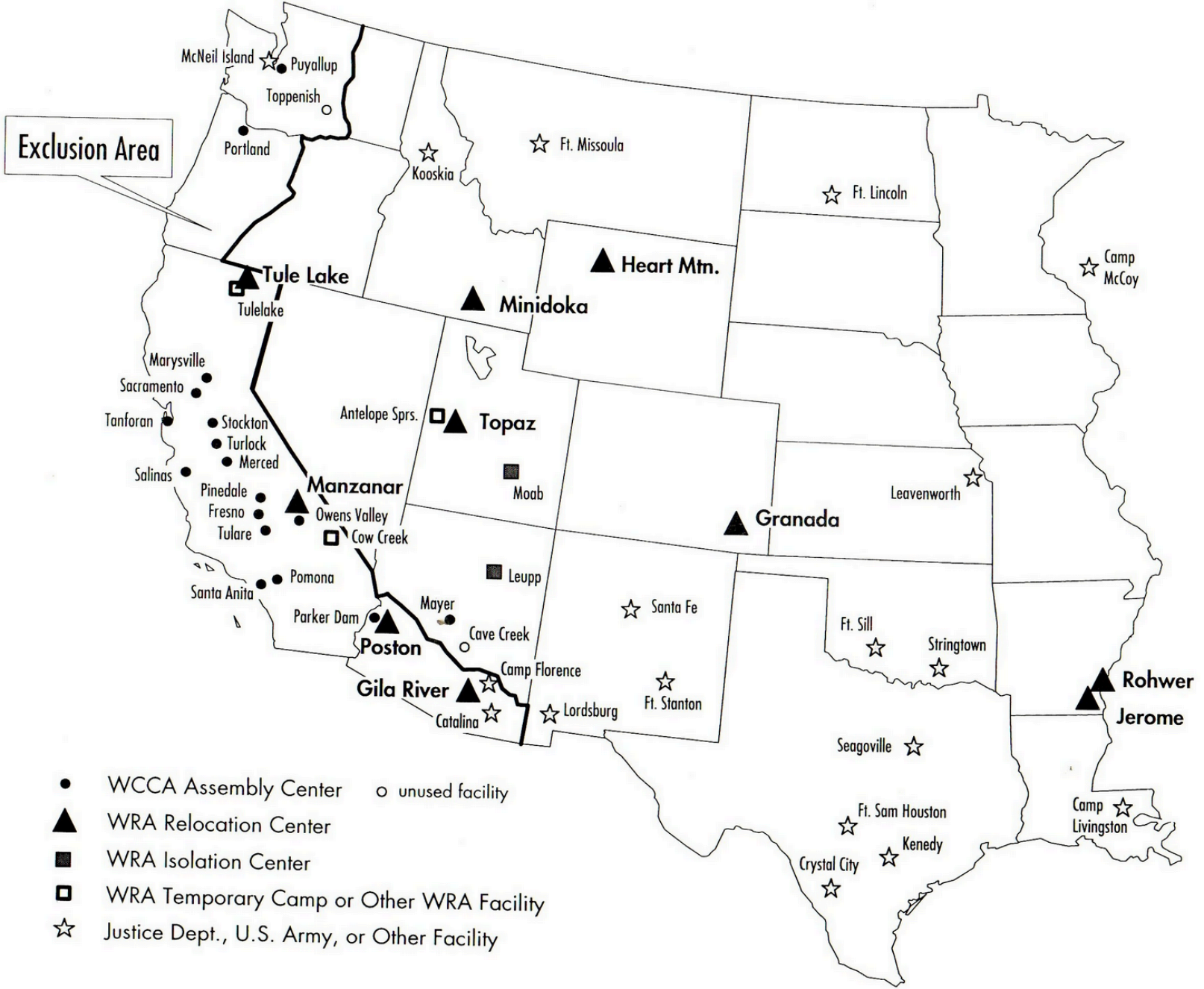
LOWER COLUMBIA ESTUARY PARTNERSHIP STUDY AREA





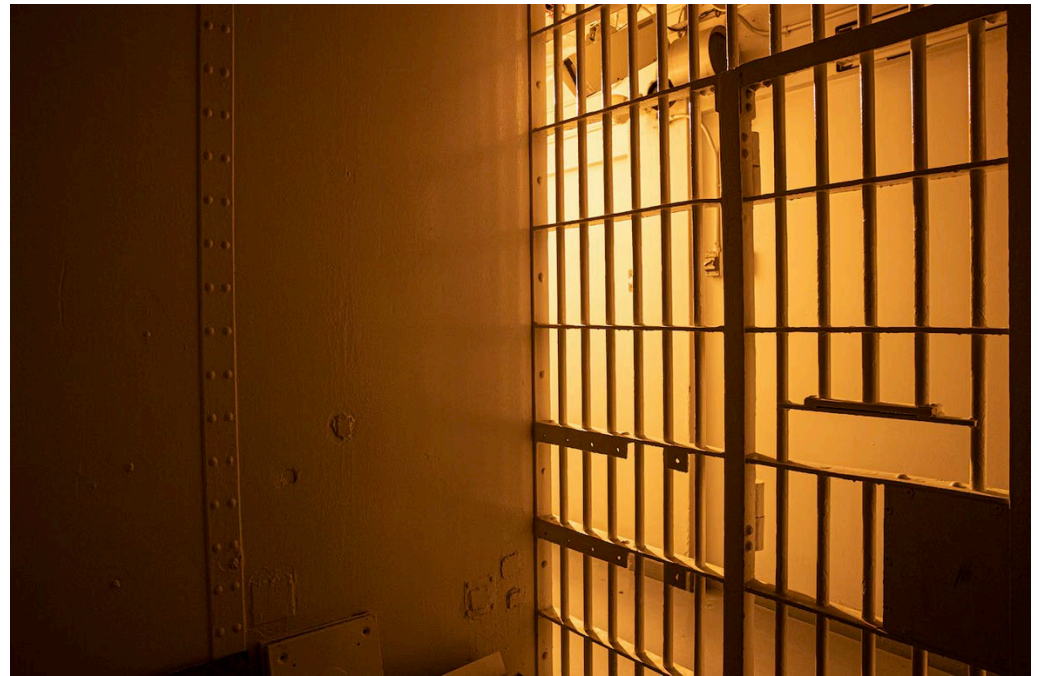
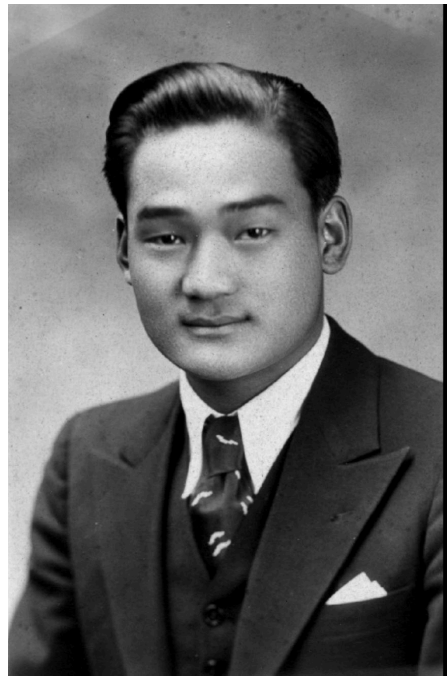


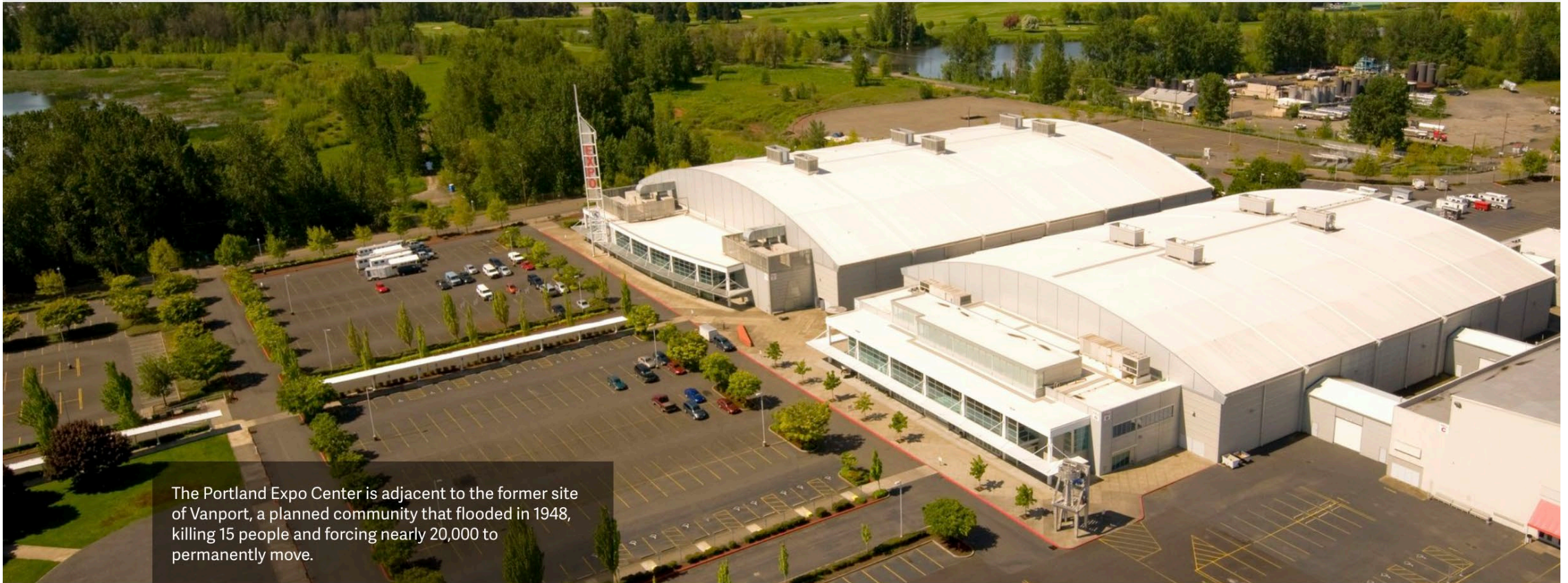




Exclusion Area

- WCCA Assembly Center ○ unused facility
- ▲ WRA Relocation Center
- WRA Isolation Center
- WRA Temporary Camp or Other WRA Facility
- ☆ Justice Dept., U.S. Army, or Other Facility





The Portland Expo Center is adjacent to the former site of Vanport, a planned community that flooded in 1948, killing 15 people and forcing nearly 20,000 to permanently move.

The Portland community will have a chance to reflect on its history through engaging student presentations at the “Honoring Our History: A reflection on the Vanport Flood and the Portland Assembly Center” event at 6 p.m. May 26 at the [Expo Center](#).





Statement to Returning JAPANESE

Under the War Department's recent ruling you will soon be permitted to return to this county.

FOR YOUR OWN BEST INTERESTS, WE URGE YOU NOT TO RETURN.

Certain incidents have already occurred that indicate the temper of the citizens of this county.

Public records show that there are about 25 or 30 families, out of some 600 Japanese, who have not already sold their property in Hood River County. We strongly urge these to dispose of their holdings.

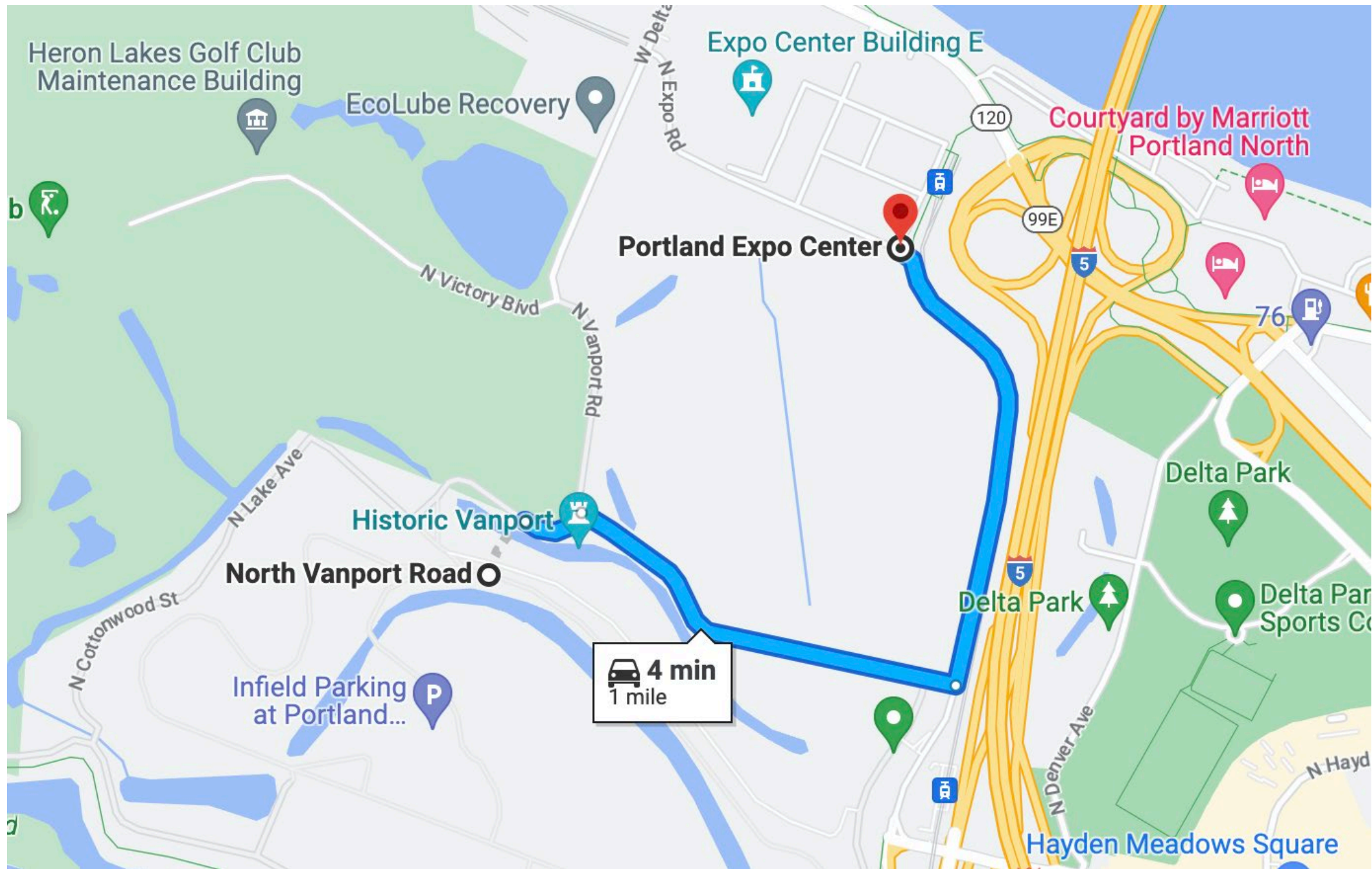
If you desire assistance from this Post in disposing of your land, we pledge ourselves to see that you get a square deal.

If you do return, we also pledge that, to the best of our ability, we will uphold law and order, and will countenance no violence.

In this program we ask the support of the citizens of this County.

**HOOD RIVER POST NO. 22.
American Legion,
Department of Oregon.**





Heron Lakes Golf Club
Maintenance Building

EcoLube Recovery

Expo Center Building E

Courtyard by Marriott
Portland North

Portland Expo Center

Historic Vanport

North Vanport Road

Infield Parking
at Portland...

4 min
1 mile

Delta Park

Delta Park

Delta Park
Sports Co

Hayden Meadows Square



Statement to Returning JAPANESE

Under the War Department's recent ruling you will soon be permitted to return to this county.

FOR YOUR OWN BEST INTERESTS, WE URGE YOU NOT TO RETURN.

Certain incidents have already occurred that indicate the temper of the citizens of this county.

Public records show that there are about 25 or 30 families, out of some 600 Japanese, who have not already sold their property in Hood River County. We strongly urge these to dispose of their holdings.

If you desire assistance from this Post in disposing of your land, we pledge ourselves to see that you get a square deal.

If you do return, we also pledge that, to the best of our ability, we will uphold law and order, and will countenance no violence.

In this program we ask the support of the citizens of this County.

HOOD RIVER POST NO. 22.
American Legion,
Department of Oregon.

Hood River County Historical Museum



Beth Nakamura

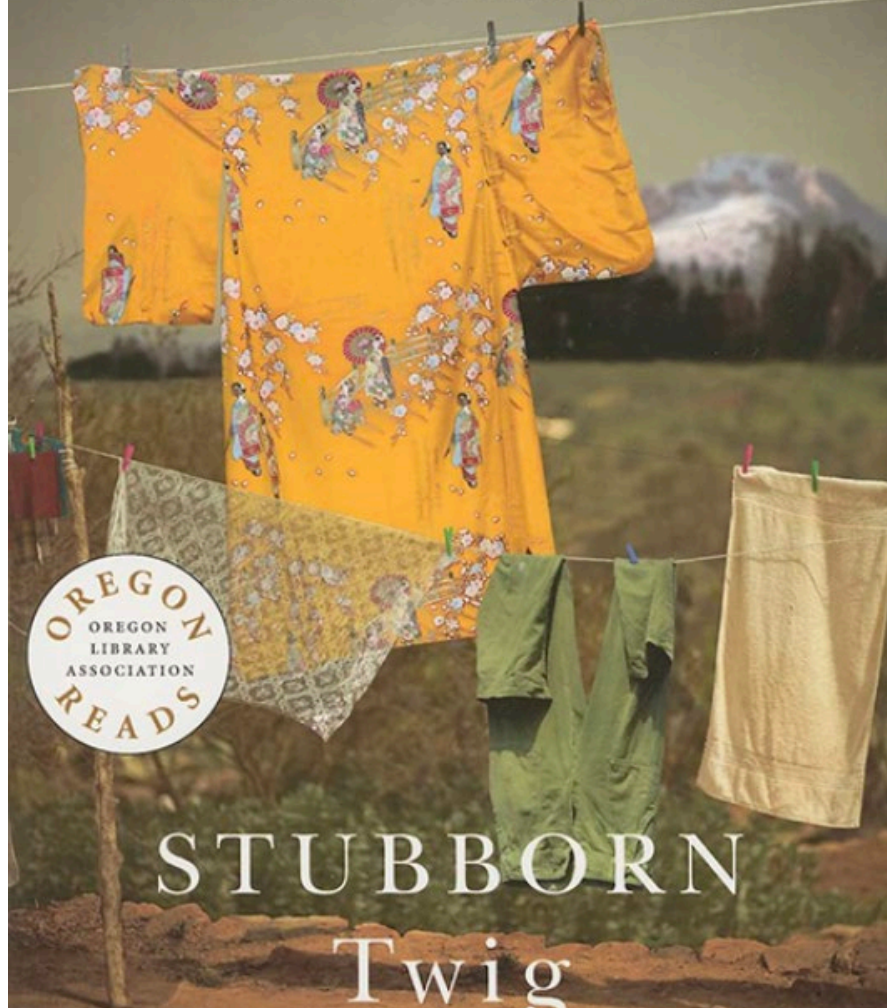
1 / 26

Hood River American Legion apologizes to Japanese American veterans

Linda Tamura, center, who has written two books on the history of the Japanese American community and Nisei veterans in Hood River, spoke after the apology. Post 22 American Legion of Hood River officially apologized to Japanese American veterans and their families Thursday in a ceremony held in Hood River. The apology was for when the organization removed the names from the county courthouse honor roll on Nov. 29, 1944. In a ceremony held at the Anderson Tribute Center In Hood River, Commander Carl Casey apologize to the community on behalf of the post. November 11, 2022 Beth Nakamura/Staff



LAUREN KESSLER



STUBBORN
Twig

Three Generations in the Life of a
Japanese American Family

Foreword by Governor Theodore R. Kulongoski



Stubborn Twigs



Stubborn Twigs

The Oregon Nikkei

Dr. Leslie P. King, J.E.D.I. Master

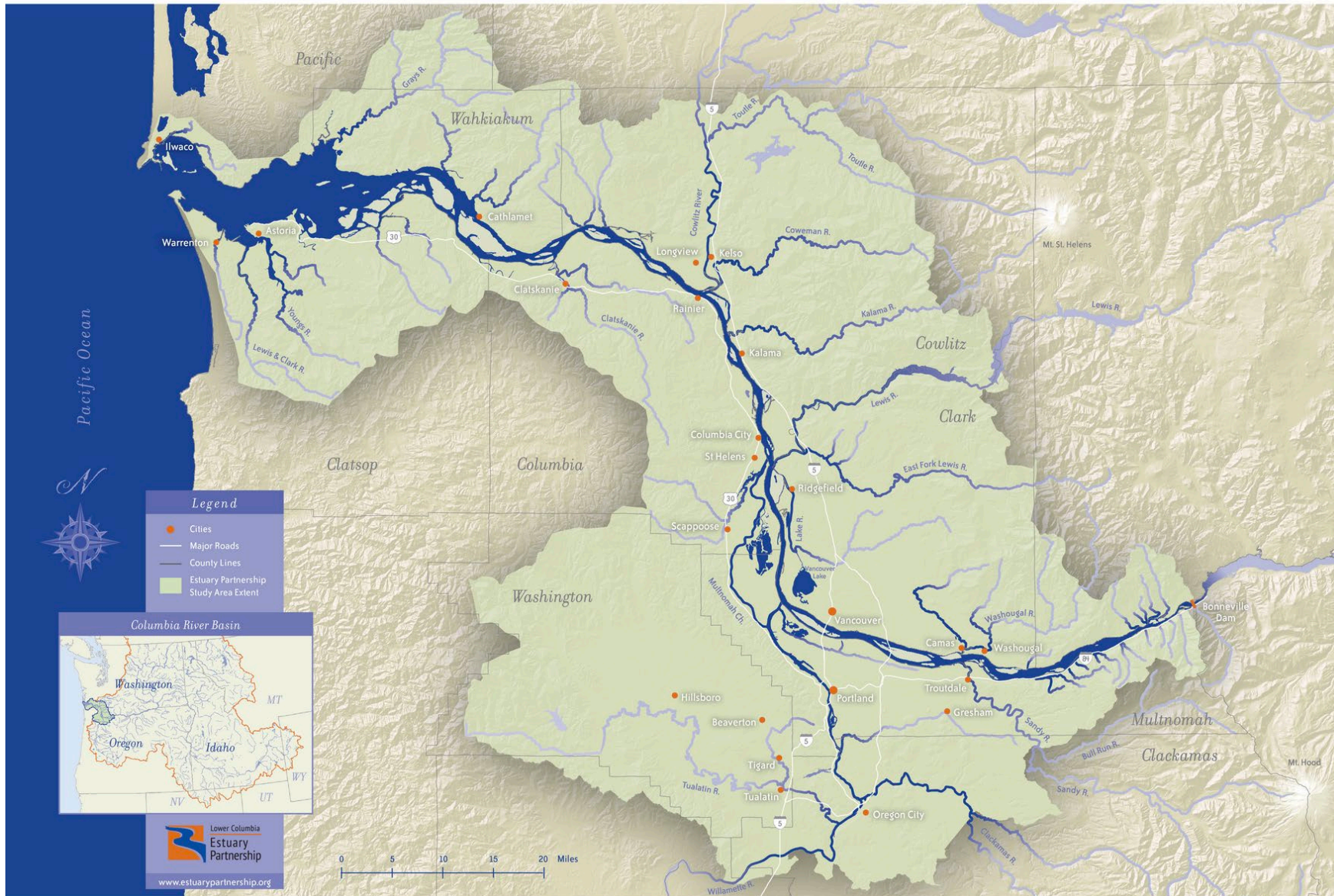
October 31, 2024

KLAMATH EJ CONCEPTS

Homelessness	Salmon Wars
Poverty	Bootleg Fire (Flames & Smoke)
Systemic Racism	Habitat Degradation (Logging, Cattle)
Indigenous Treaty Rights	Mormon Cricket Plague
Termination 1954	Toxic Algal Bloom (Phosphorous)
Intergenerational Trauma (Epigenetics)	Endangered Species-- Salmon & Suckers
Deaths of Despair	Farmers/Ranchers (Pickle Jar Lottery)
Chronic Health Issues	Surface & Ground Water Irrigation
Tule Lake Internment Camp	Bucket Brigade (Bundys)
Home Ownership	Klamath Project Dam Removal
Educational Levels	Federal Agencies (BOR, USFWS, NOAA)
	Wetlands/Wildlife Refuges (Botulism)

Lower Columbia River and Estuary

LOWER COLUMBIA ESTUARY PARTNERSHIP STUDY AREA



RASHID KHALIDI

The U.S. Should Think Twice About Israel's Plans for Gaza

4 MIN READ

THOMAS L. FRIEDMAN

Why Israel Is Acting This Way

6 MIN READ



DAVID FRENCH

The Moral Questions at the Heart of the Gaza War

5 MIN READ



WENDY MACNAUGHTON

The Importance of Looking at What (and Who) You Don't See

1 MIN READ



BRAIDING SWEETGRASS

INDIGENOUS WISDOM, SCIENTIFIC KNOWLEDGE,
AND THE TEACHINGS OF PLANTS

A NEW ORIGIN STORY

The 1619 Project

WHITE FRAGILITY