

# Portland

LOWER ALBINA  
1948

Black-occupied dwellings, 1950



Willamette River



Vanport City Vacation School, August 1943. Oregon Historical Society, Neg. OrHi 78867. The Oregonian



# Vancouver-Portland





# FLOOD! (1948)

May 28, 1948:

River gage in Vancouver reads 28.3ft at 4:00 pm

May 30, 1948 (**Sunday** of Memorial Day Weekend):

4:17 pm, railroad berm acting as a dike gives way

**Note:** Vanport residents had received an early morning notice that day ensuring of them of their safety

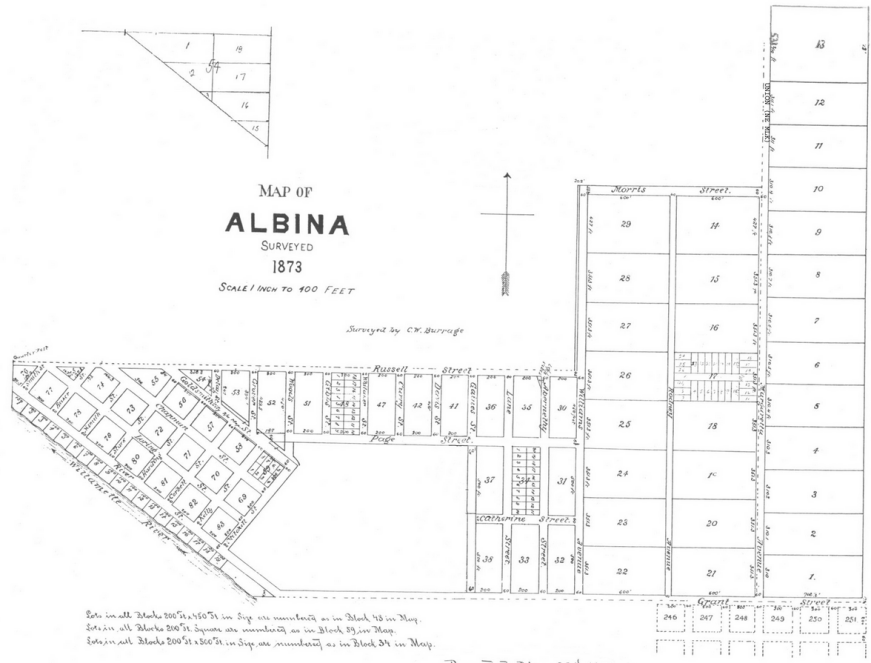
Jun 1, 1948:

Columbia River crests at 30.2 feet



Refugees, 1948. Oregon Historical Society, Neg. OrHi 90163. (Oregon Historical Society)





See small blocks 200' x 150' in size are numbered as in Block 43 on Map.  
 Sections all blocks 200' x 150' square are numbered as in Block 39 on Map.  
 Sections all blocks 200' x 150' in size are numbered as in Block 34 on Map.

Recorded May 28<sup>th</sup> 1875.





# VANPORT TO ALBINA\*

Many real estate agents wouldn't sell to families of color, most forced to relocate to Albina

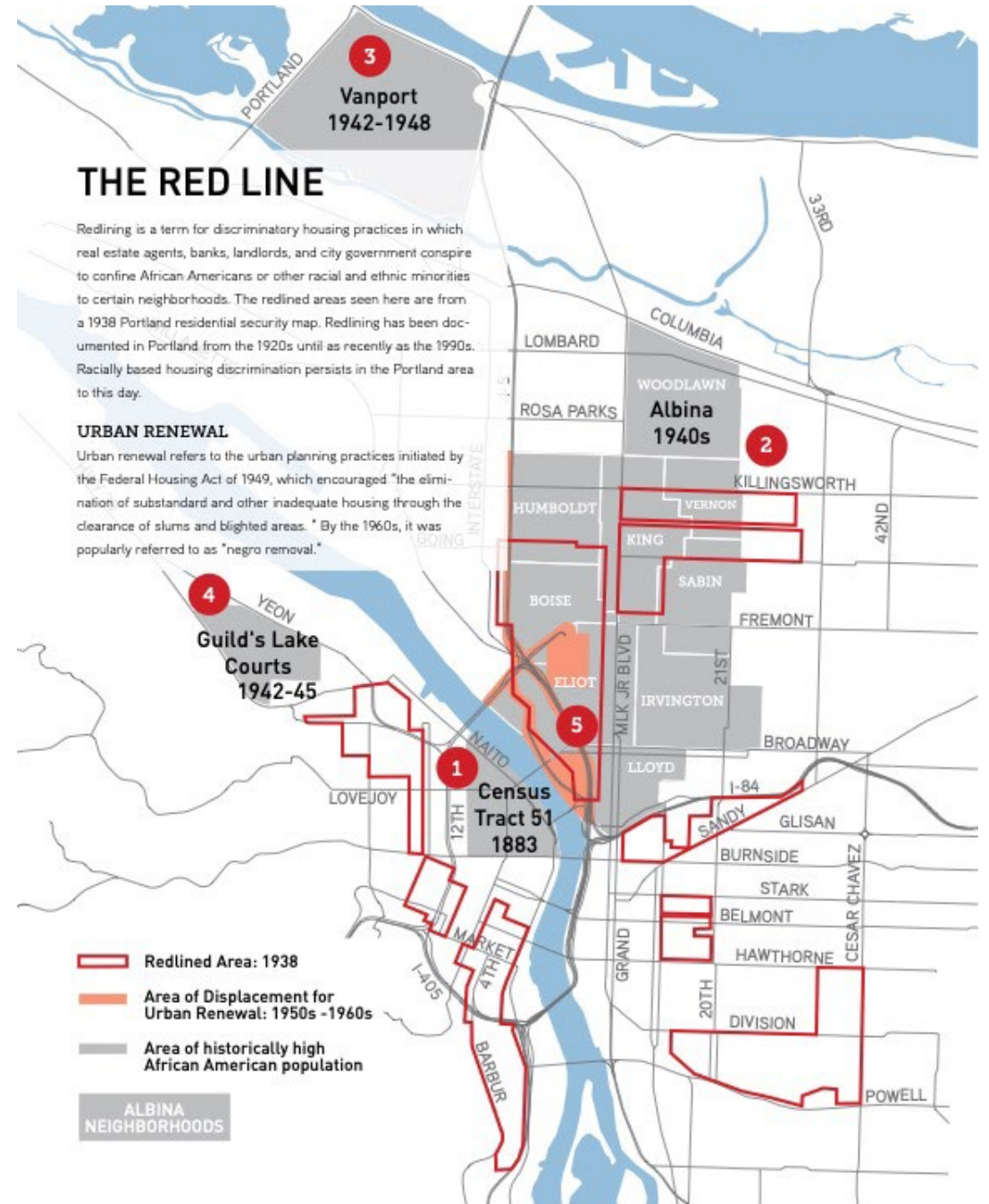
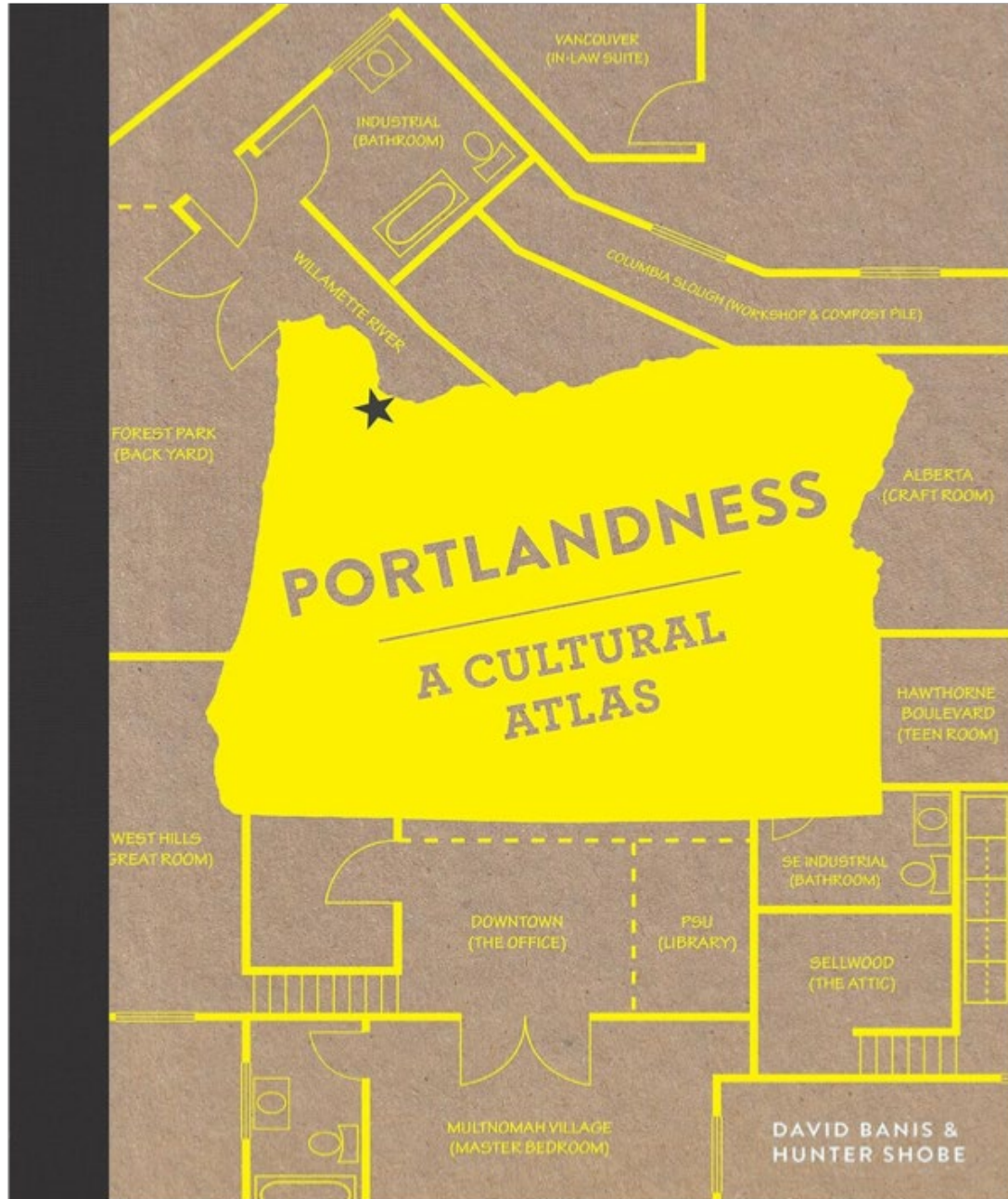
*The Albina District* (Woodlawn, Humboldt, King, Vernon, Boise, Sabin, Eliot, Irvington, Lloyd District) becomes Portland's singular Black neighborhood with a thriving jazz scene – The Dude Ranch, The Cotton Club

1955:  
Portland acquires Vanport, now site of Portland International Raceway (PIR)

1971:  
Heron Lakes Golf Course opens



In the heart of the Albina district, the corner of North Williams and North Russell was once the center of a small yet thriving business district. These businesses were torn down in the early 1970s as part of large-scale urban renewal projects. Photo circa 1962.



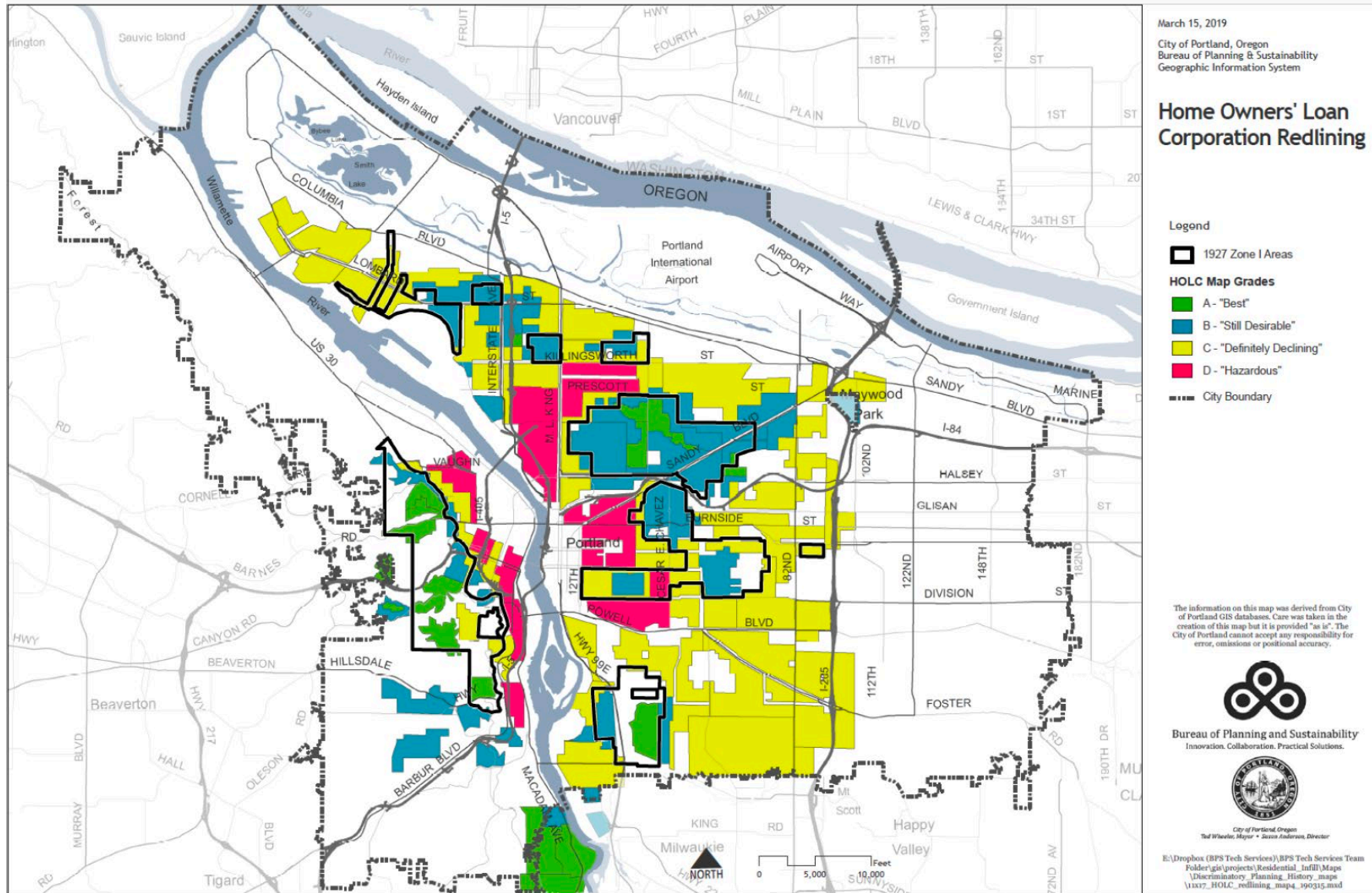


Figure 4. Map of original Zone I boundaries on top of 1938 Home Ownership Loan Corporation color grades, 2019

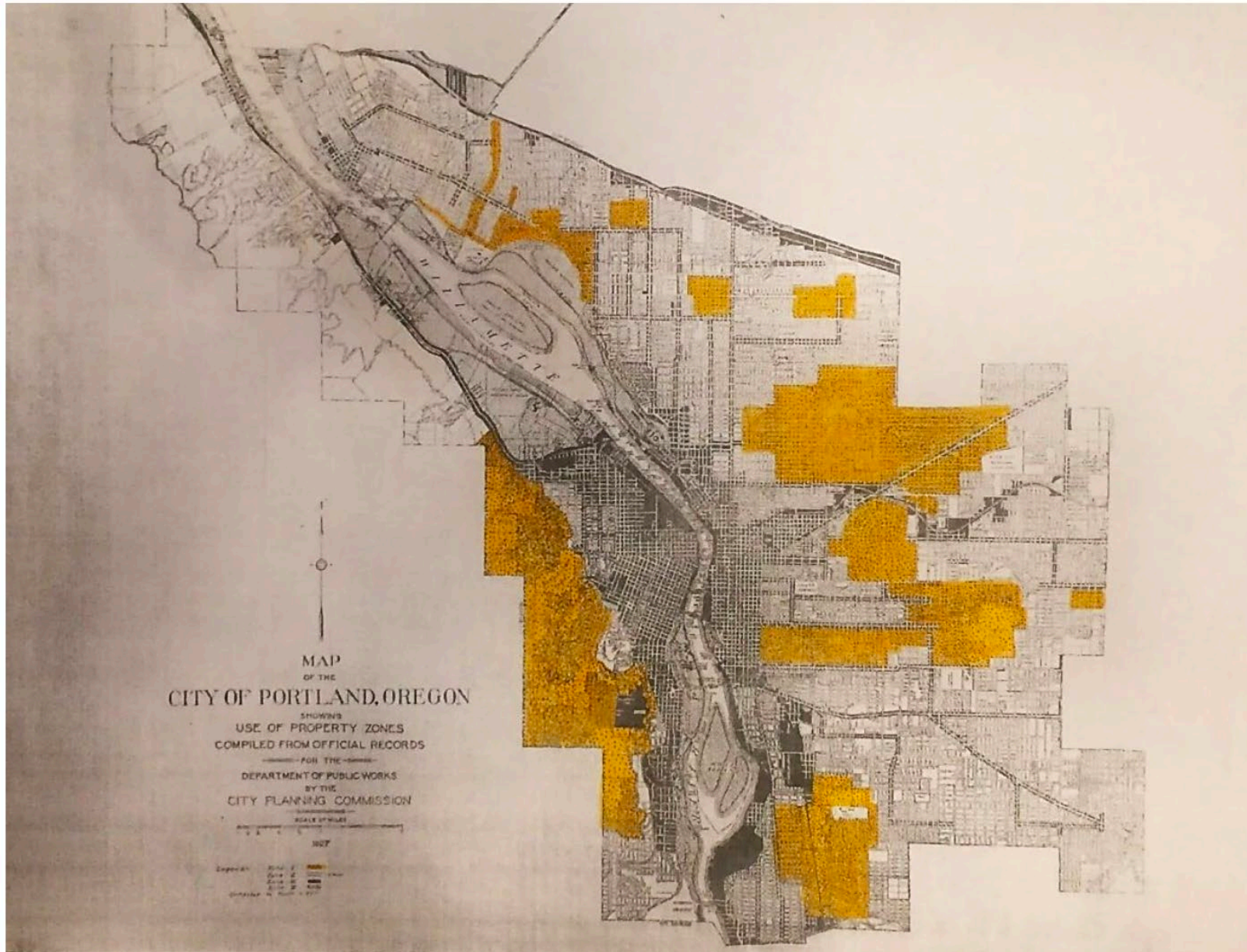


Figure 1. City of Portland map of Zone I single-family residential areas, 1927

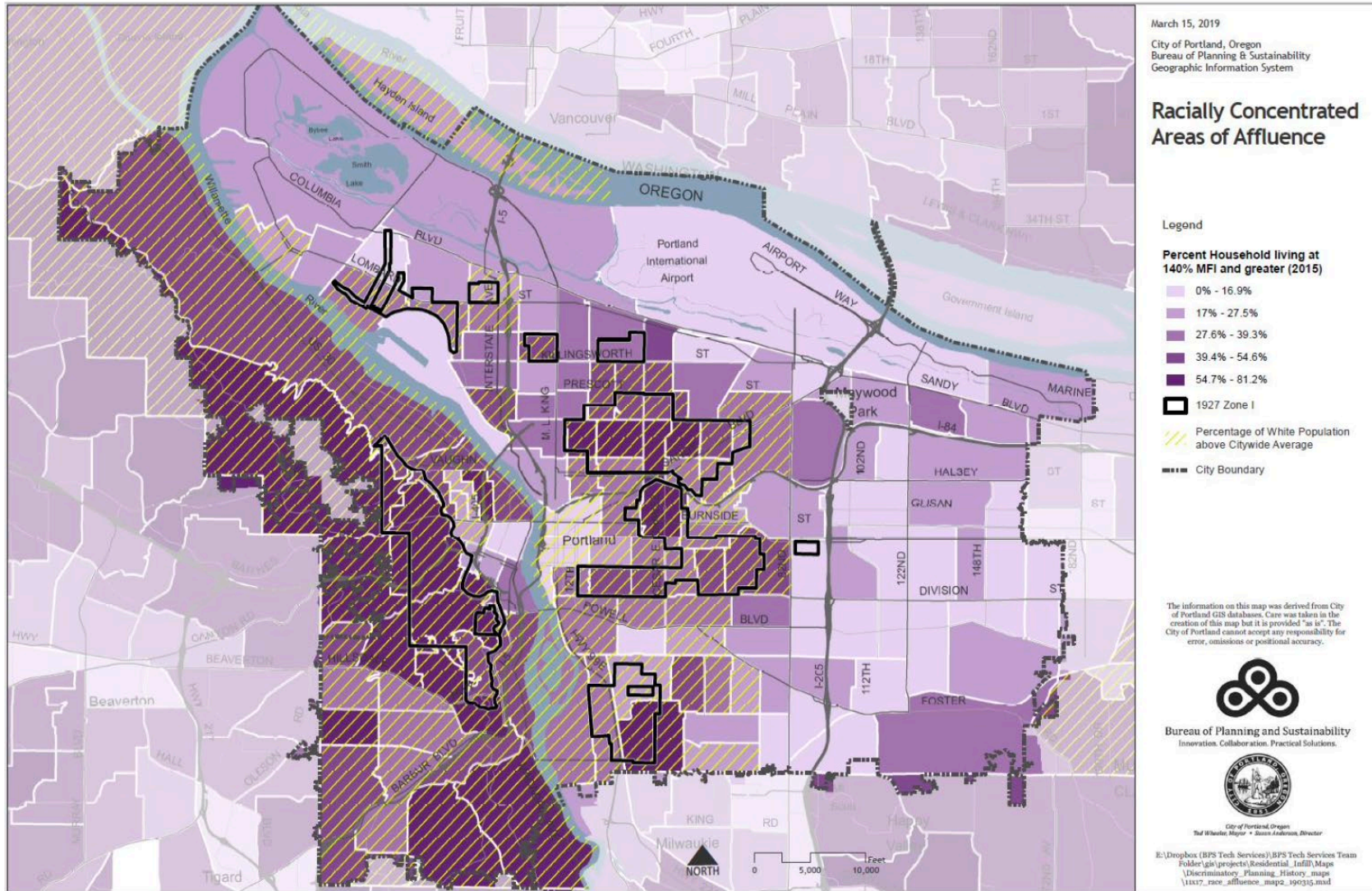


Figure 10. Map Racially Concentrated Areas of Affluence: Percentage of Households Living at 140% Median Family Income (MFI) and Percentage of White Population above Citywide Average, 2019

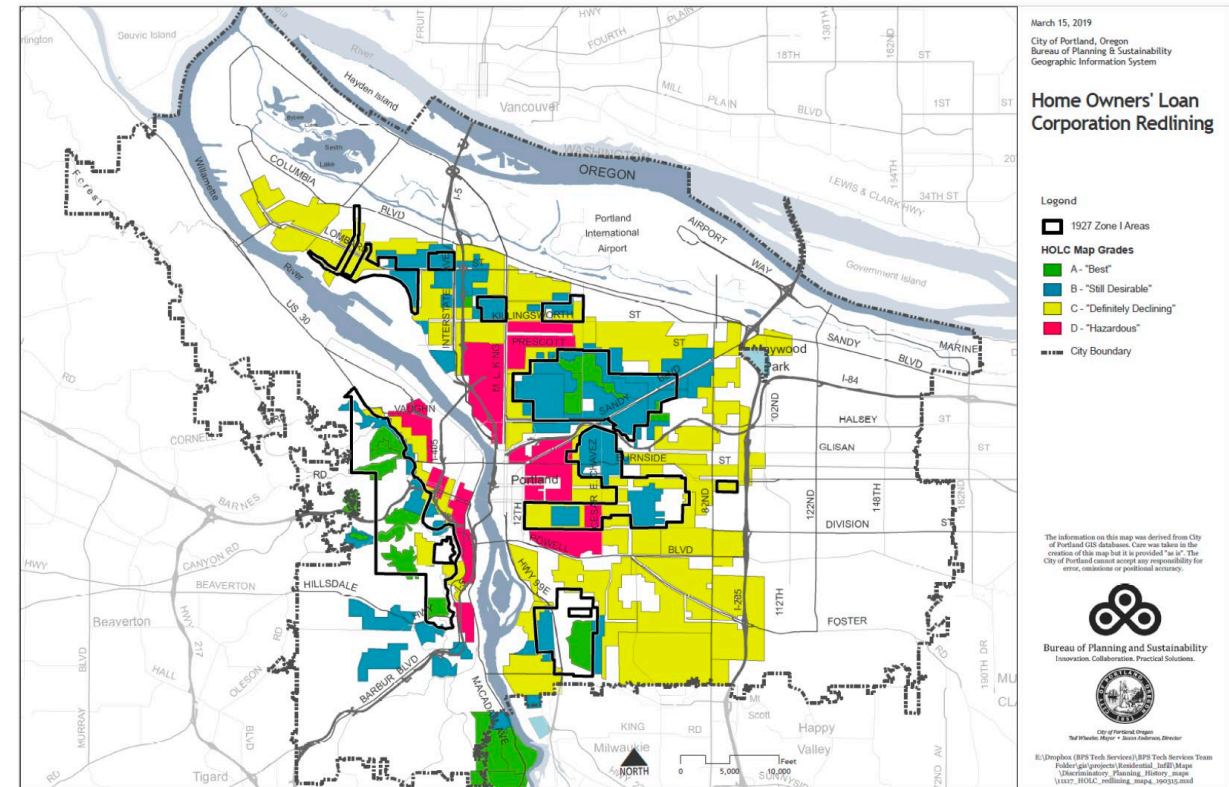
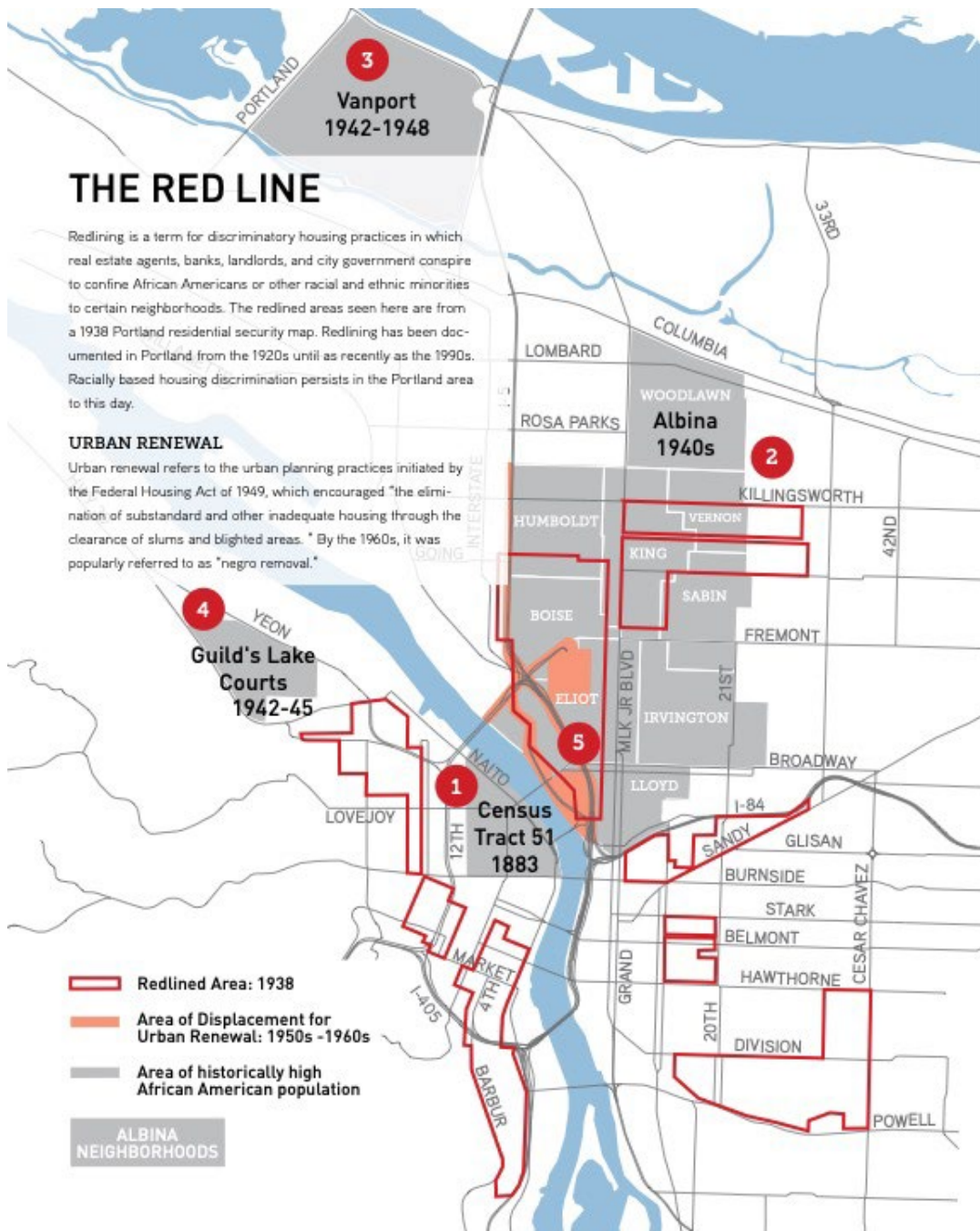


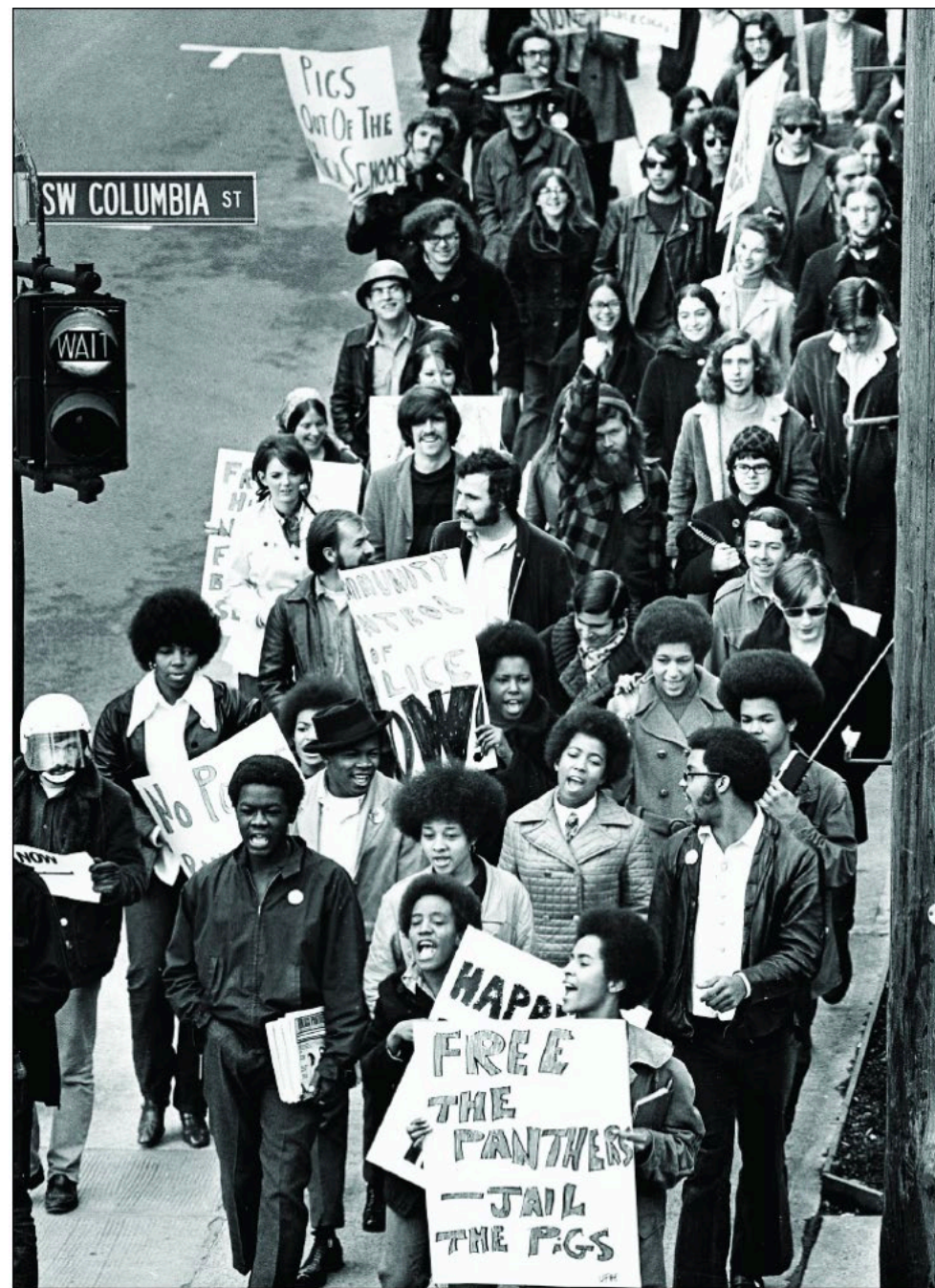
Figure 4. Map of original Zone I boundaries on top of 1938 Home Ownership Loan Corporation color grades, 2019



The band Rated X featured Norman Sylvester who is one of the narrators of The Albina Soul Walk.





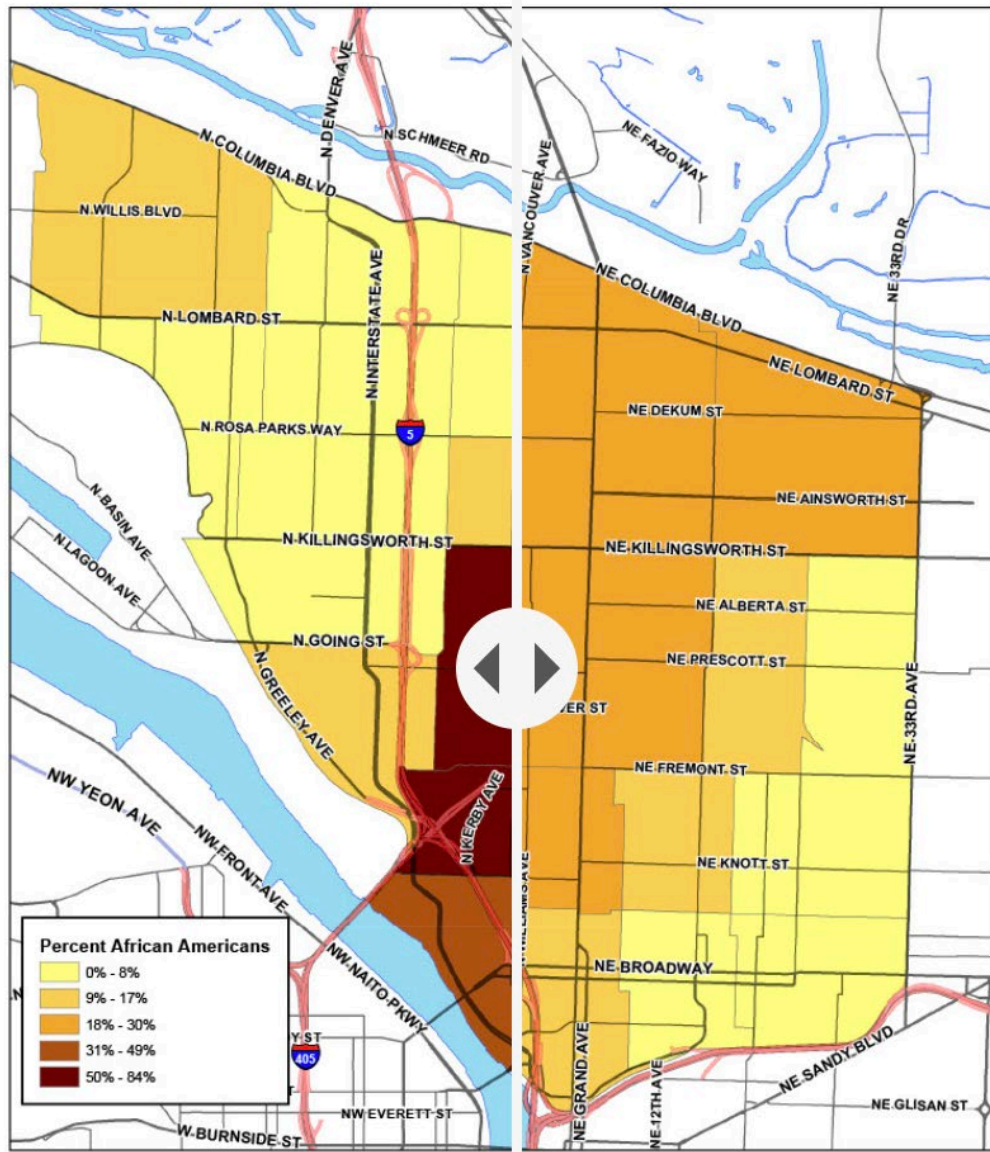




Historic Aerial of Veteran's Memorial Coliseum  
Courtesy of the City of Portland Archives



The construction of Interstate 5 through North Portland in 1963 resulted in the destruction of hundreds of homes and businesses and bisected the historically Black Albina neighborhood.

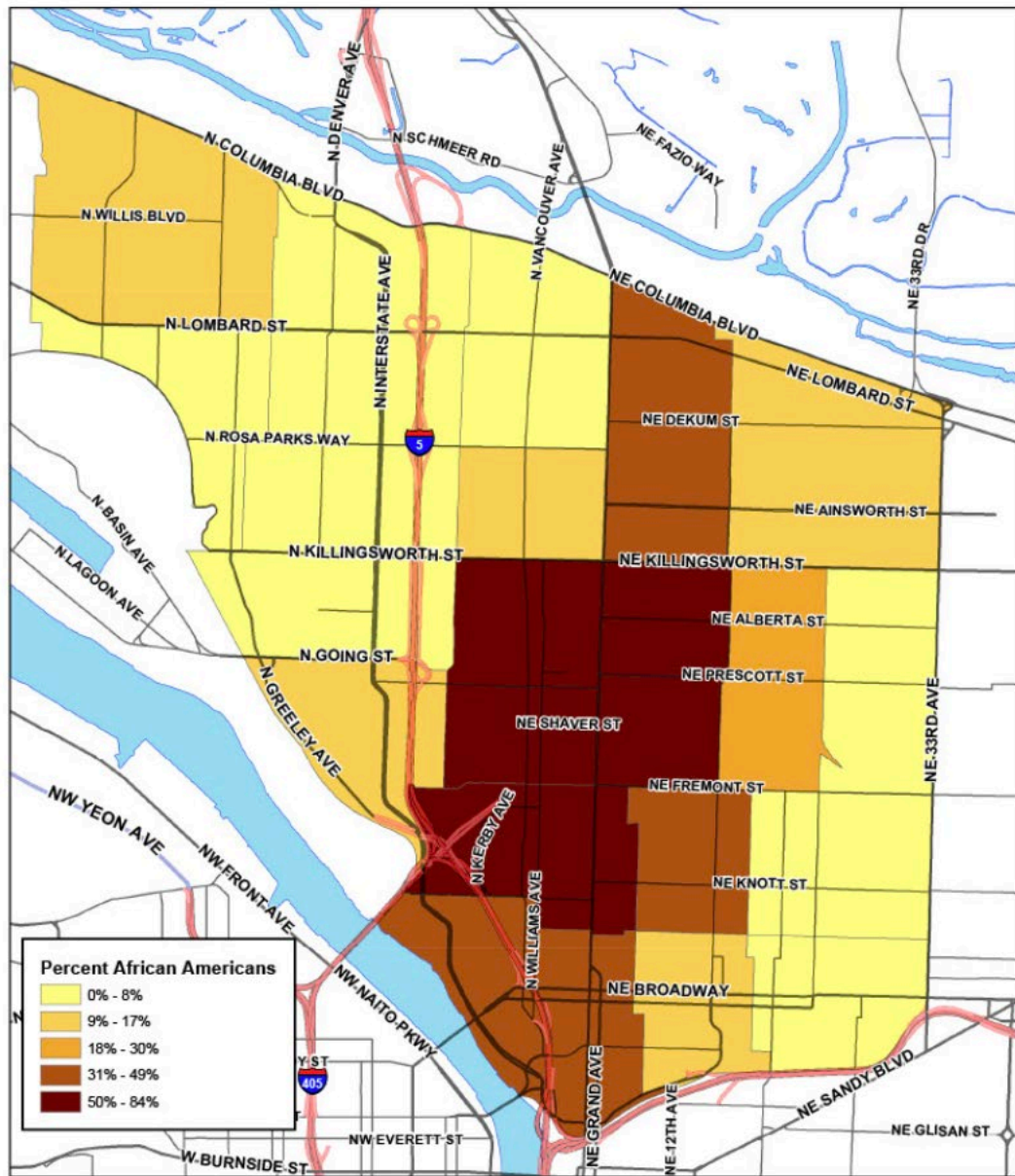


**Black or African American Percent of Total Population 2010**  
**North/Northeast Portland**  
**by Census Tract**

**Black or African American Percent of Total Population 2010**

Area	African-American	Total	Percent
Portland	36,695	583,776	6%
North/Northeast	12,274	83,237	15%

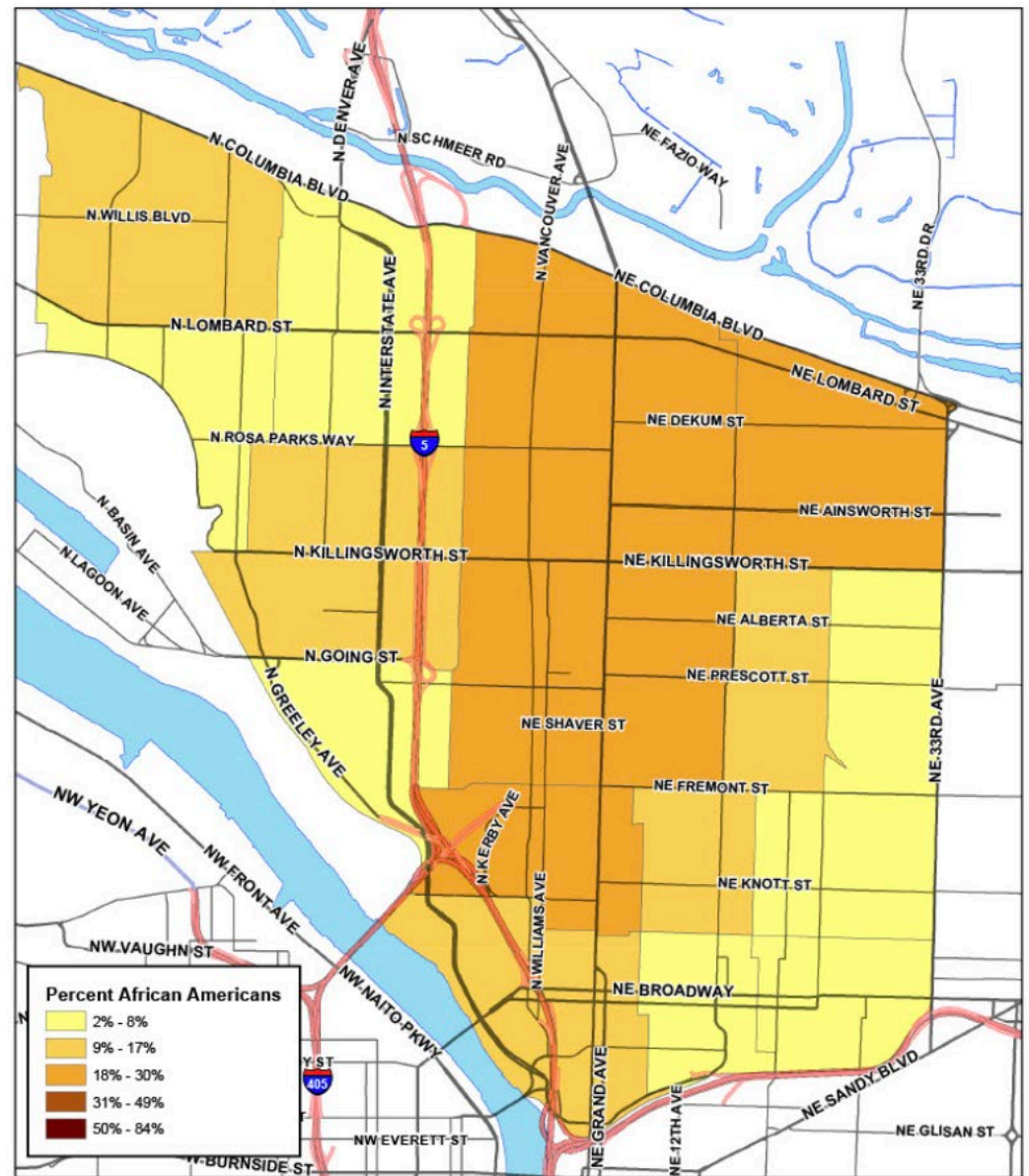
Created by Portland Housing Bureau, June 2014  
 Source: 2010 Decennial Census, National Historic Geographic System



**Black or African American Percent of Total Population 1970  
North/Northeast Portland  
by Census Tract**

Area	African-American	Total	Percent
Portland	21,572	382,619	6%
North/Northeast	19,463	87,891	22%

Created by Portland Housing Bureau, June 2014  
Source: 2010 Decennial Census, National Historic Geographic System



**Black or African American Percent of Total Population 2010  
North/Northeast Portland  
by Census Tract**

Area	African-American	Total	Percent
Portland	36,695	583,776	6%
North/Northeast	12,274	83,237	15%

Created by Portland Housing Bureau, June 2014  
Source: 2010 Decennial Census, National Historic Geographic System



Popular

Latest

Newsletters

*The Atlantic*

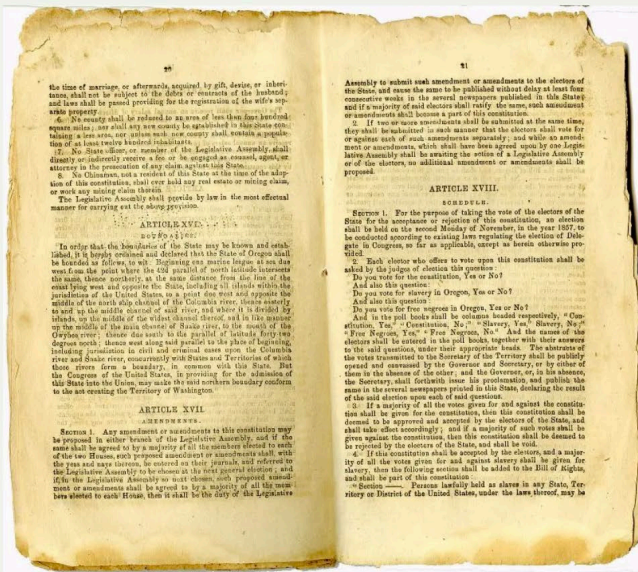
Sign In

# The Racist History of Portland, the Whitest City in America

It's known as a modern-day hub of progressivism, but its past is one of exclusion.

By Alana Semuels





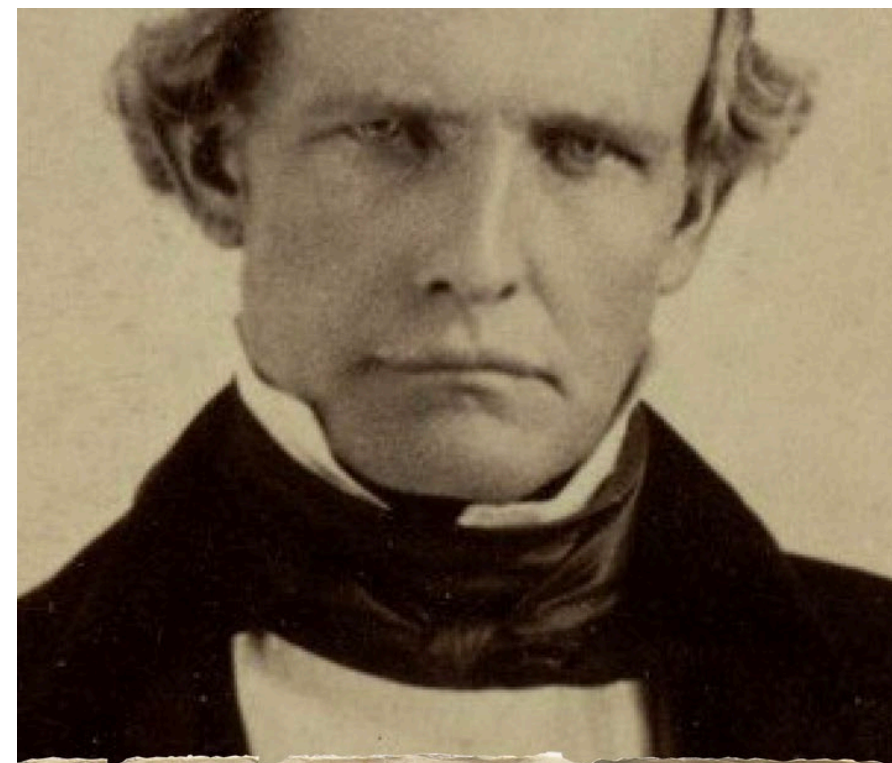
• Article XVIII, from the State Constitution. Section of Oregon State Constitution outlining slavery and exclusion laws, from the 1857 document distributed to Oregonians. Courtesy Oreg. Hist. Soc. Research Lib., Belknap 295

# Oregon's Black Exclusionary Laws

Oregon was founded with three Black exclusionary laws. The first was when Oregon outlawed slavery. The law gave slaveholders two years to remove their male slaves and three years to remove their female slaves. At that point, the free Blacks had to leave Oregon and any free Black who refused to leave would be subject to lashing.

It was called Peters Burnett’s Lash Law and the law stated that the lashings had to be no less than 22 times but no more than 39 times. Peter Burnett is quoted as saying, “the object is to keep clear of that most troublesome class of population [Blacks]. We are in a new world, under the most favorable circumstances and we wish to avoid most of those evils that have so much afflicted the United States and other countries.”

Again, Oregon passed a law stating that “it shall not be lawful for any negro or mulatto to enter into, or reside” in Oregon. Finally, when Oregon became a state it included in its Bill of Rights a clause that prohibited Blacks from being in the state, owning property, and making contracts. Thus, Oregon was the first state to enter into the Union as a “whites only” state.



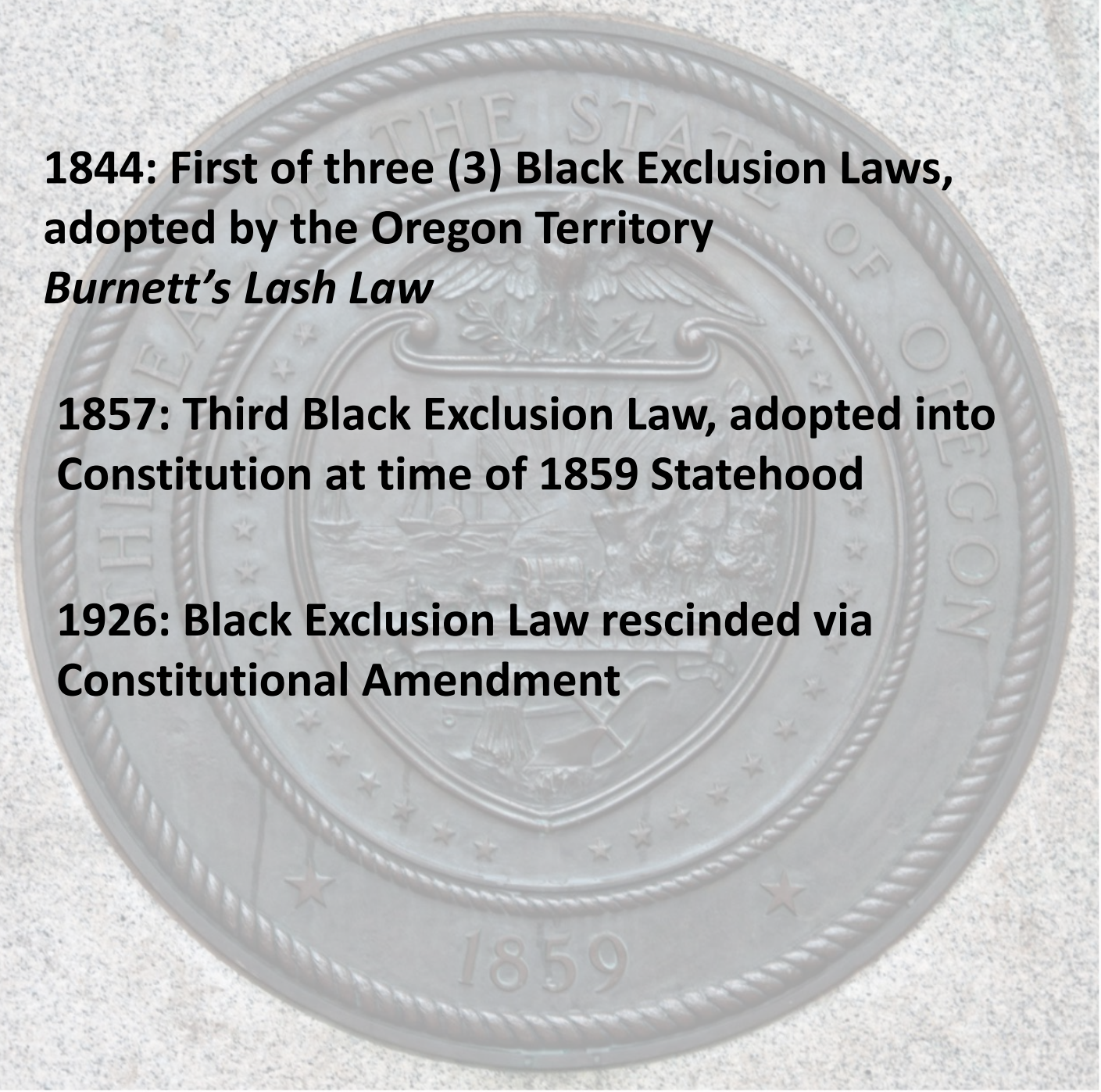
## THE TROUBLED LIFE OF PETER BURNETT

OREGON PIONEER AND  
FIRST GOVERNOR OF CALIFORNIA

R. GREGORY NOKES





The background of the slide features a large, faint, circular seal of the State of Oregon. The seal contains the text "THE STATE OF OREGON" around the top and "1859" at the bottom. In the center, there is a shield with a plow, a sheaf of wheat, and a ship, flanked by two figures. The shield is topped by a crest with a figure holding a torch and a staff. The entire seal is surrounded by a rope-like border.

**1844: First of three (3) Black Exclusion Laws,  
adopted by the Oregon Territory  
*Burnett's Lash Law***

**1857: Third Black Exclusion Law, adopted into  
Constitution at time of 1859 Statehood**

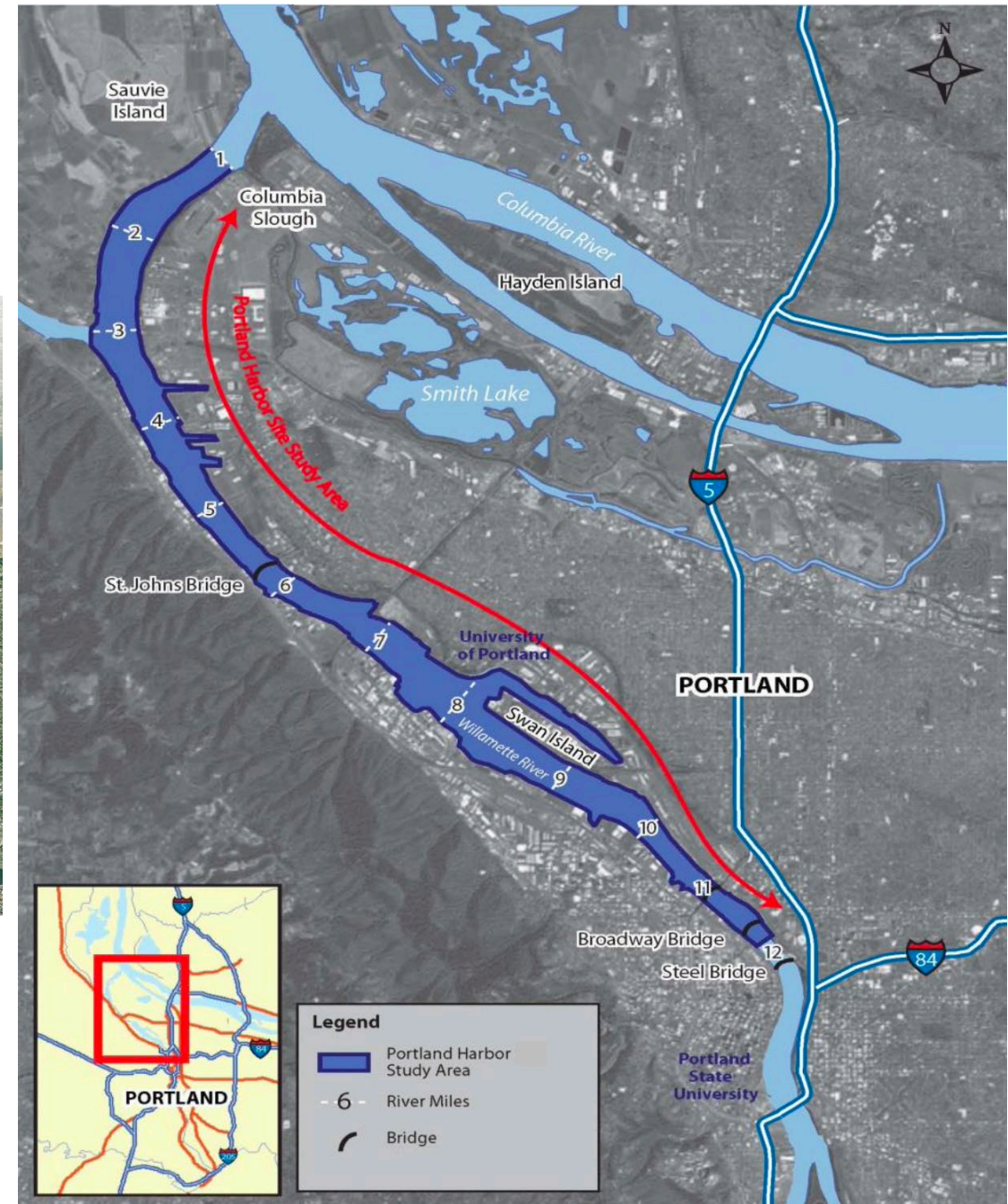
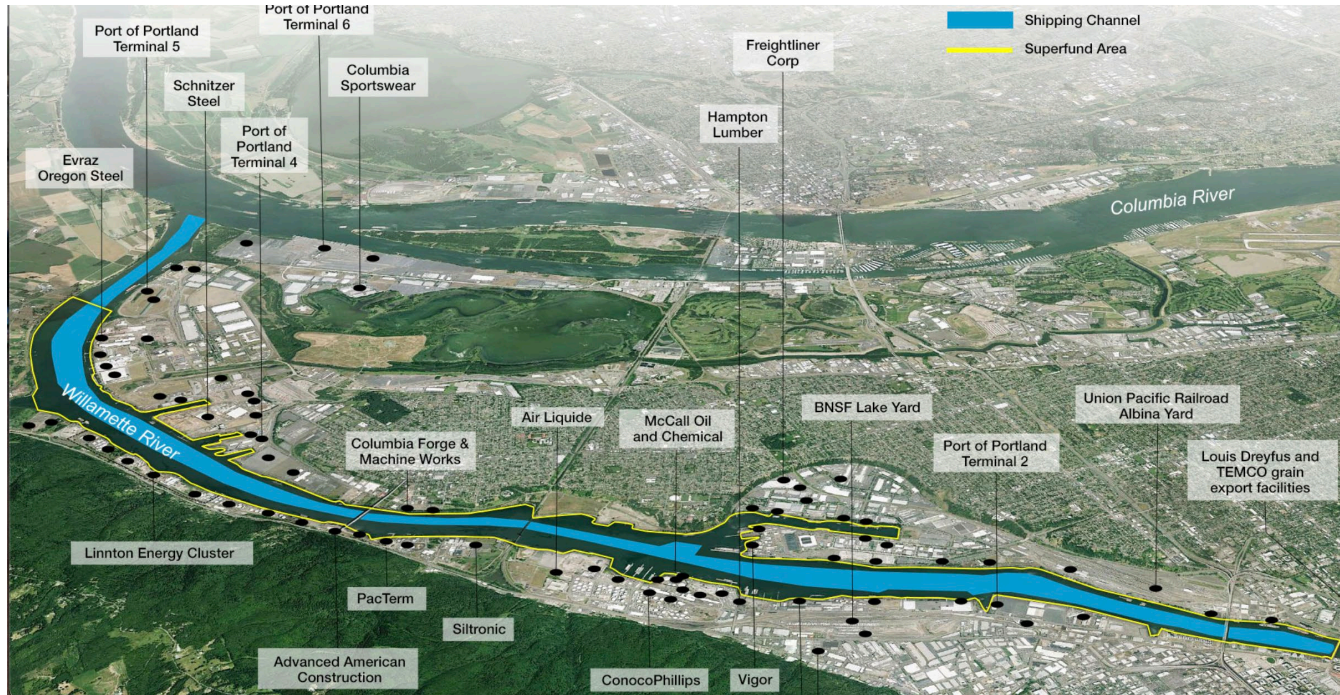
**1926: Black Exclusion Law rescinded via  
Constitutional Amendment**



# Portland Harbor Superfund Site

Connecting to the Willamette River

United States Environmental Protection Agency Region 10



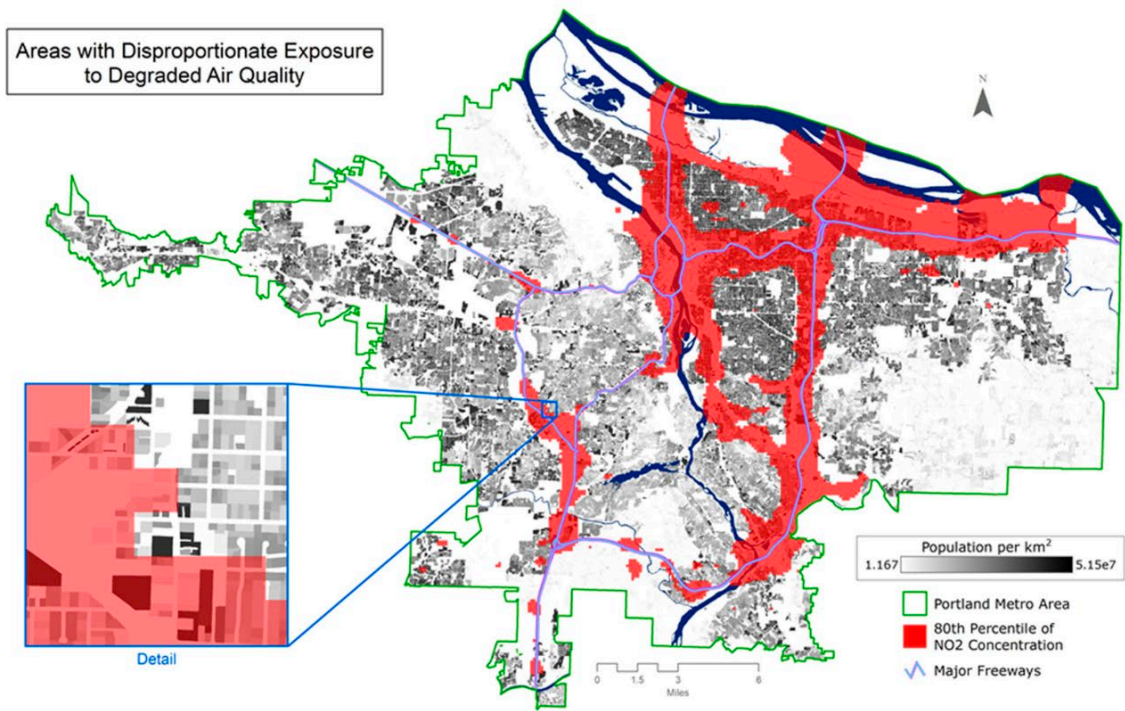
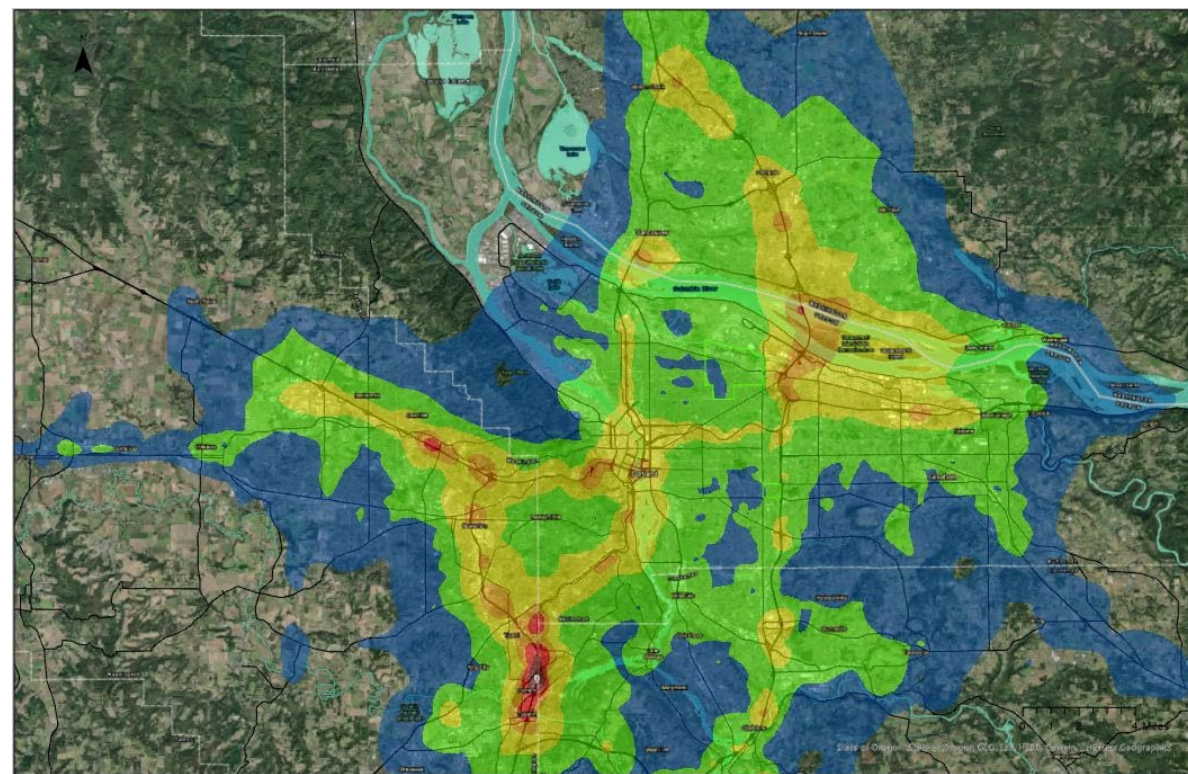
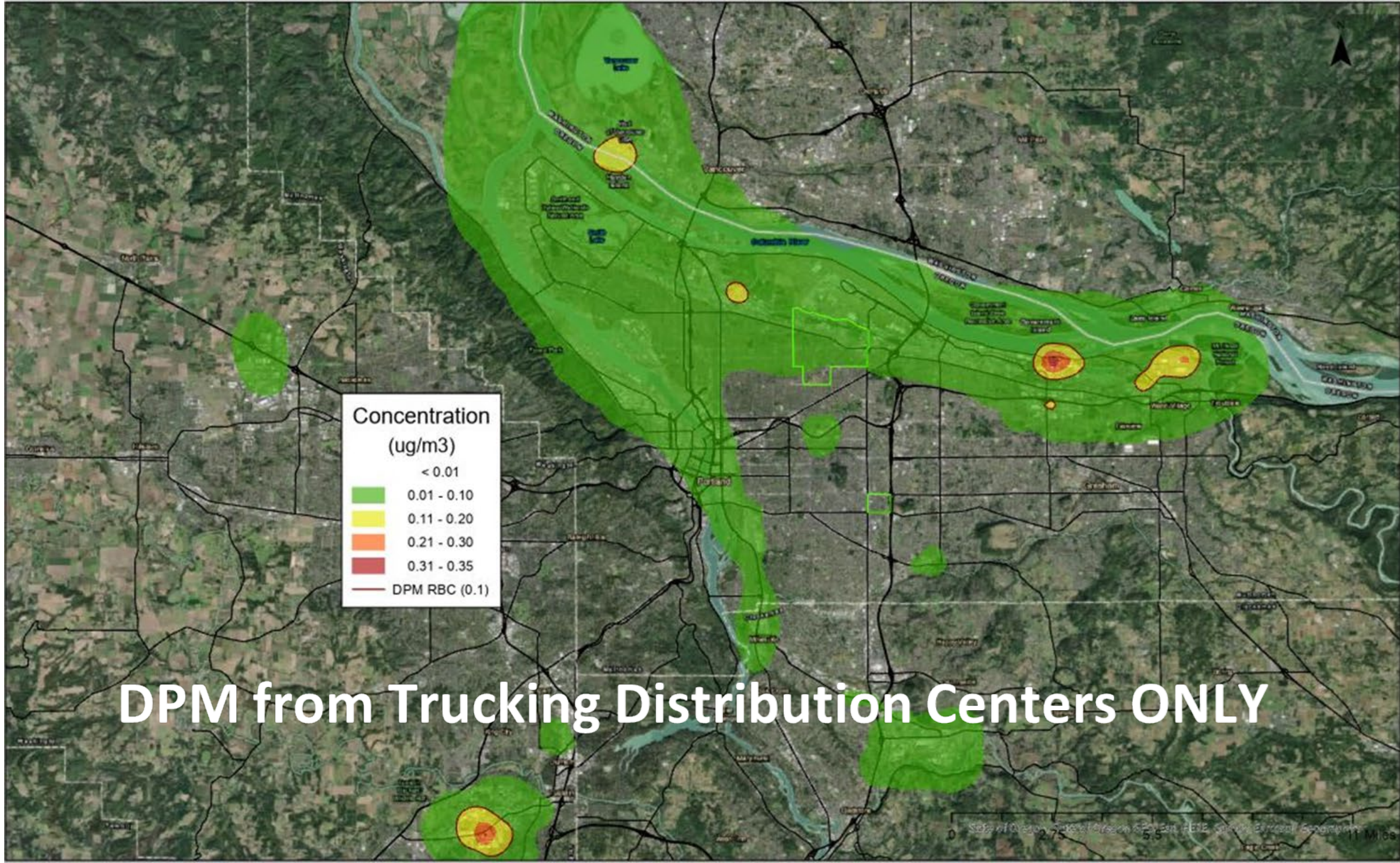


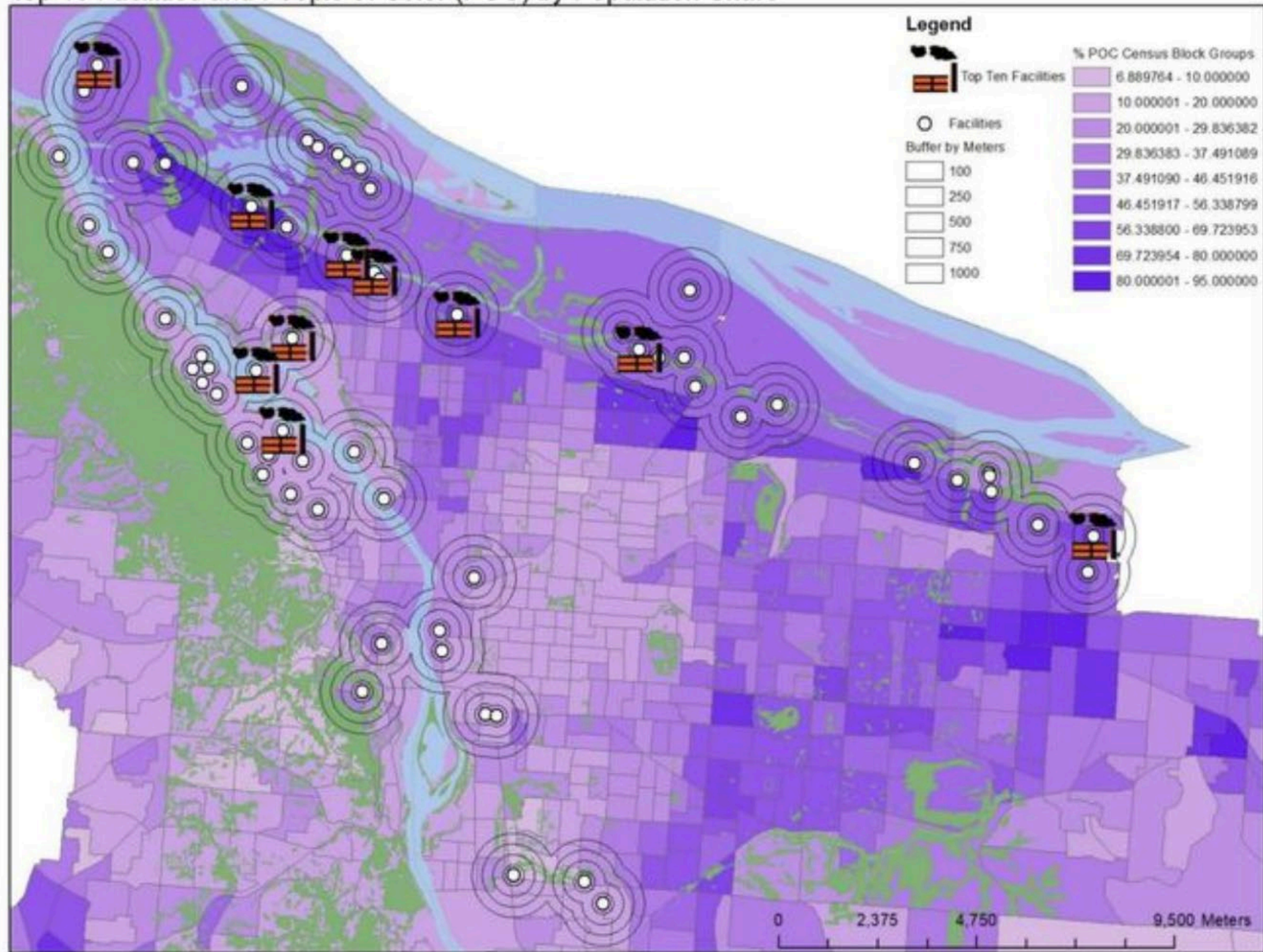
Figure 2. Distribution of the highest concentrations of NO<sub>2</sub> in areas with the greatest number of people.

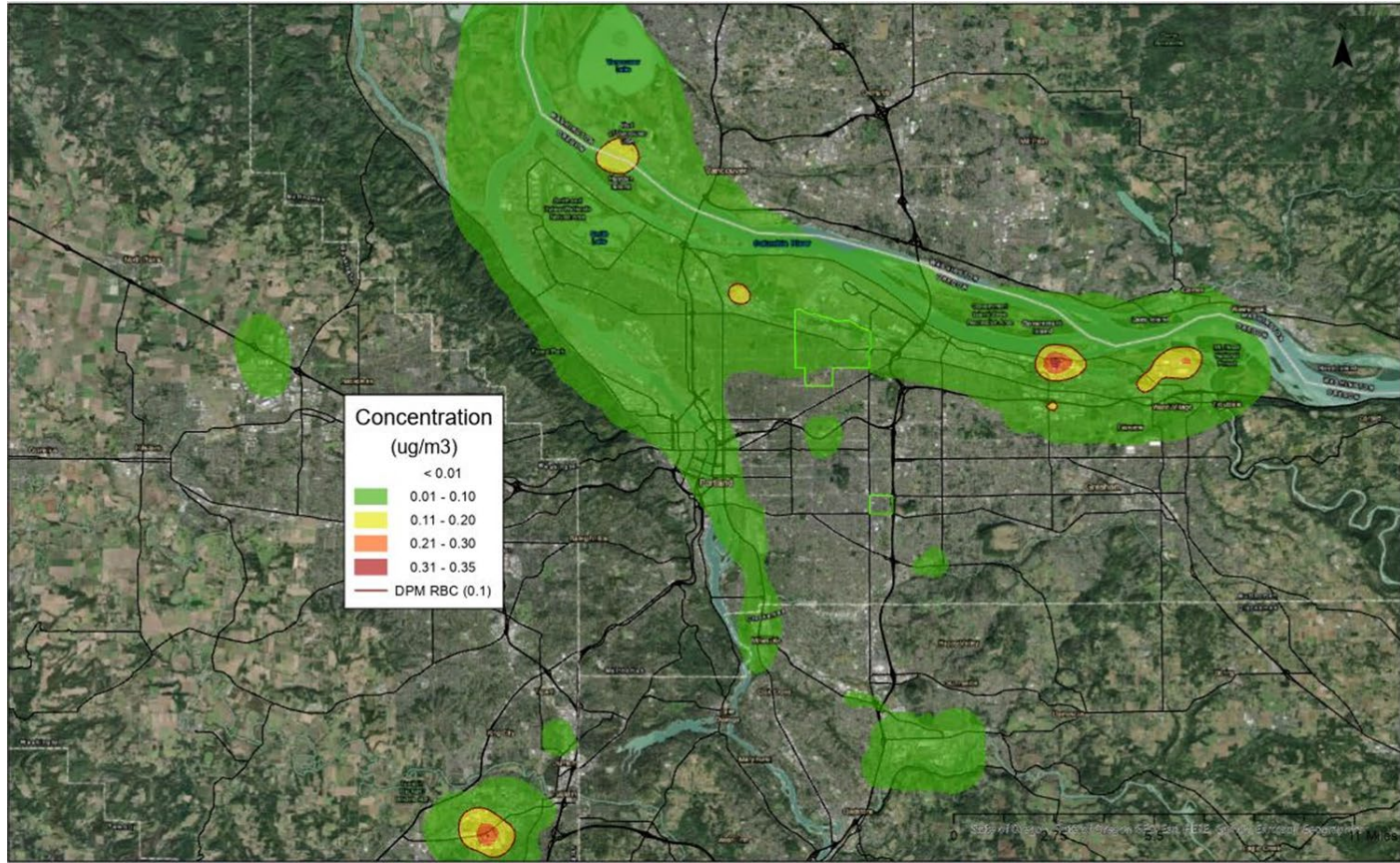
## DPM due to on-road vehicles



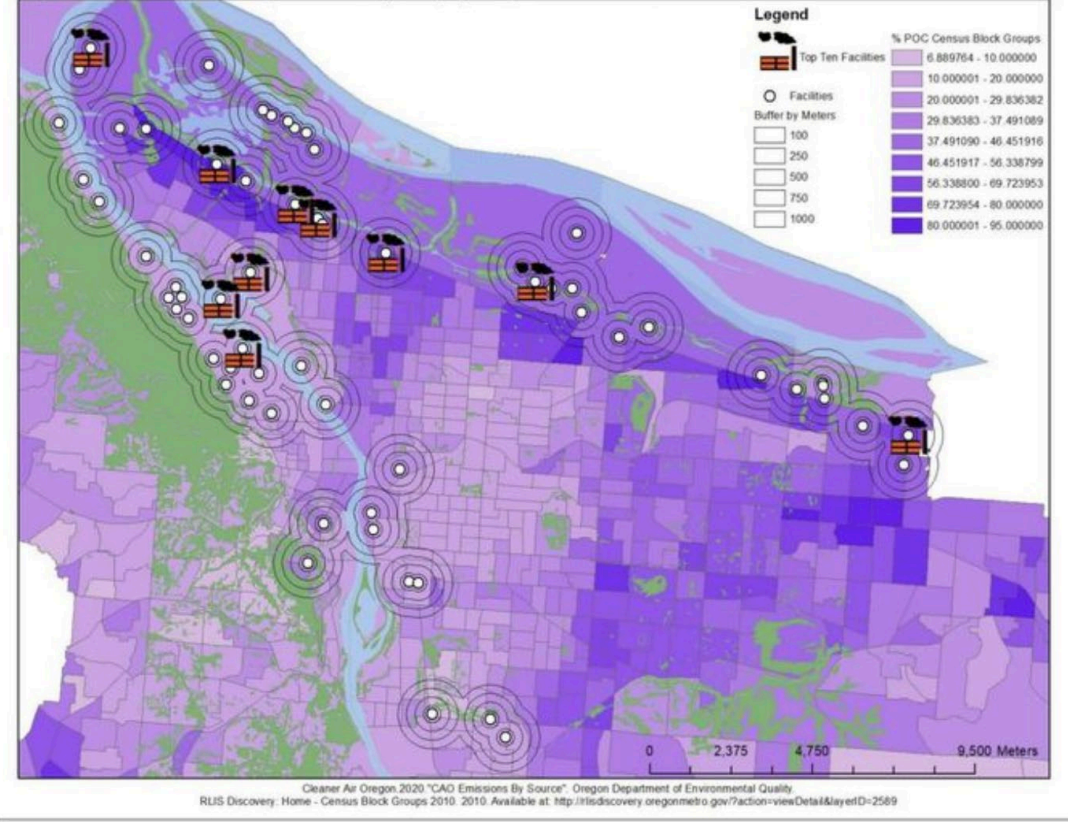


# Top 10 Facilities and People of Color (POC) by Population Share

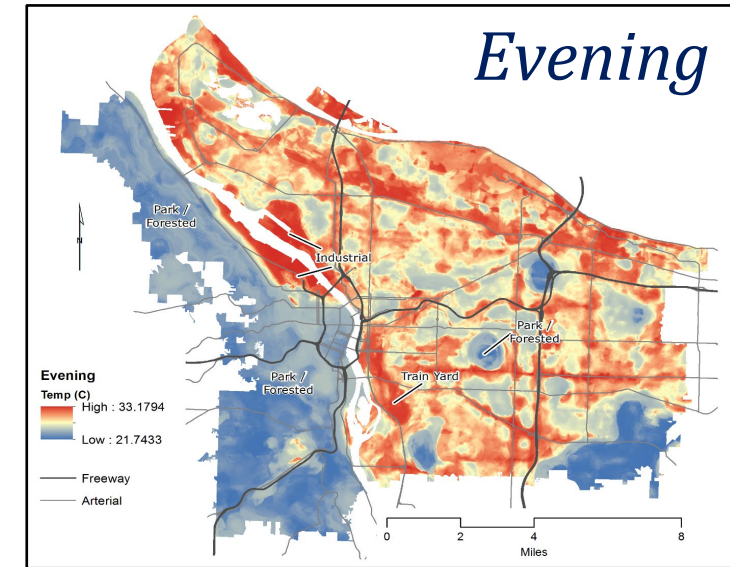
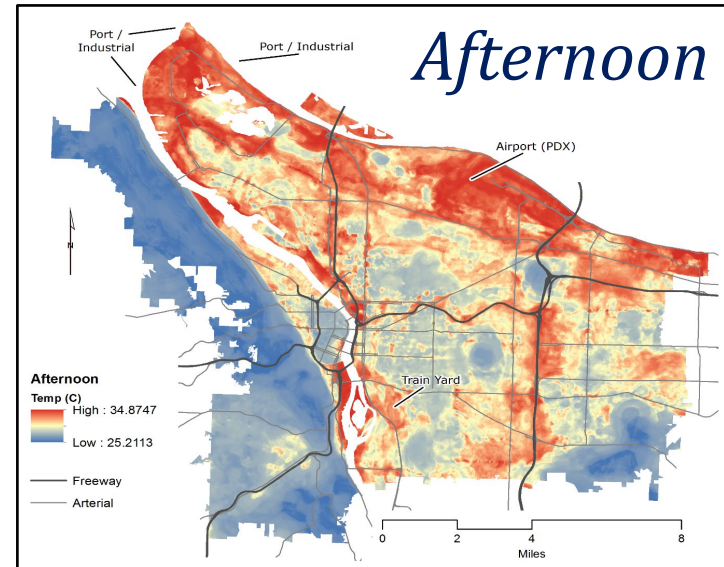
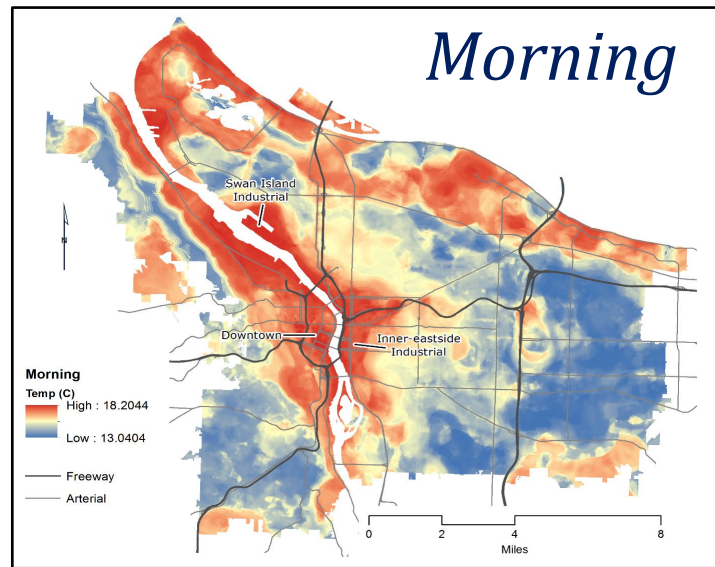









Top 10 Facilities and People of Color (POC) by Population Share







# Air Temperatures and Inequities






 Communities living in the **hottest parts** of Portland include those with
 
 Less Formal Education
 
 and in neighborhoods that contain
 
 High Racial Diversity
 
 Extreme Poverty

---

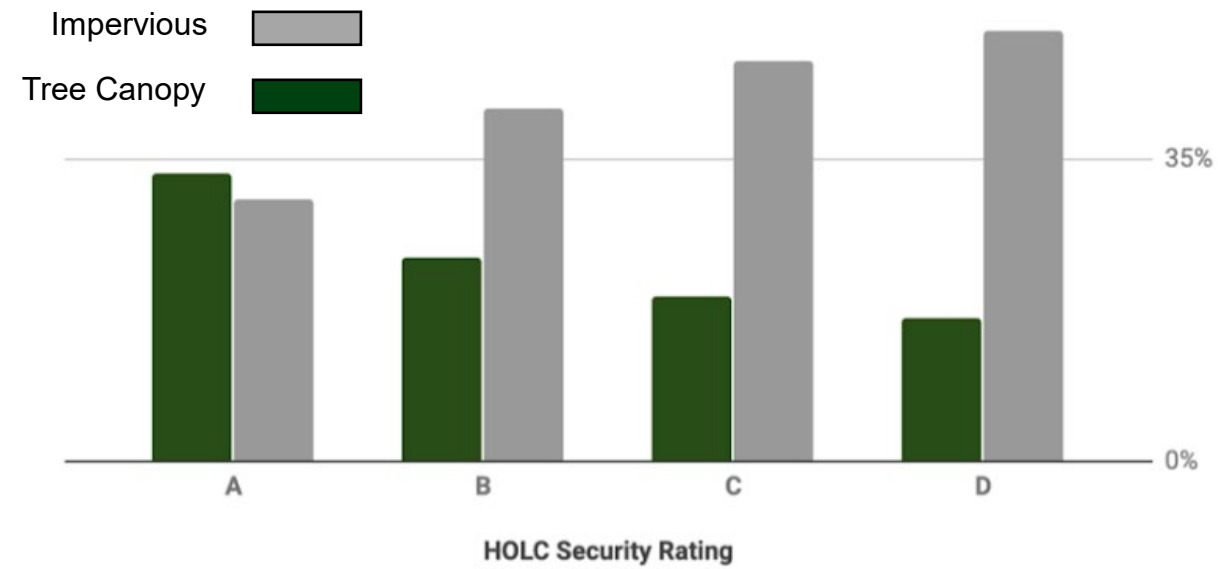
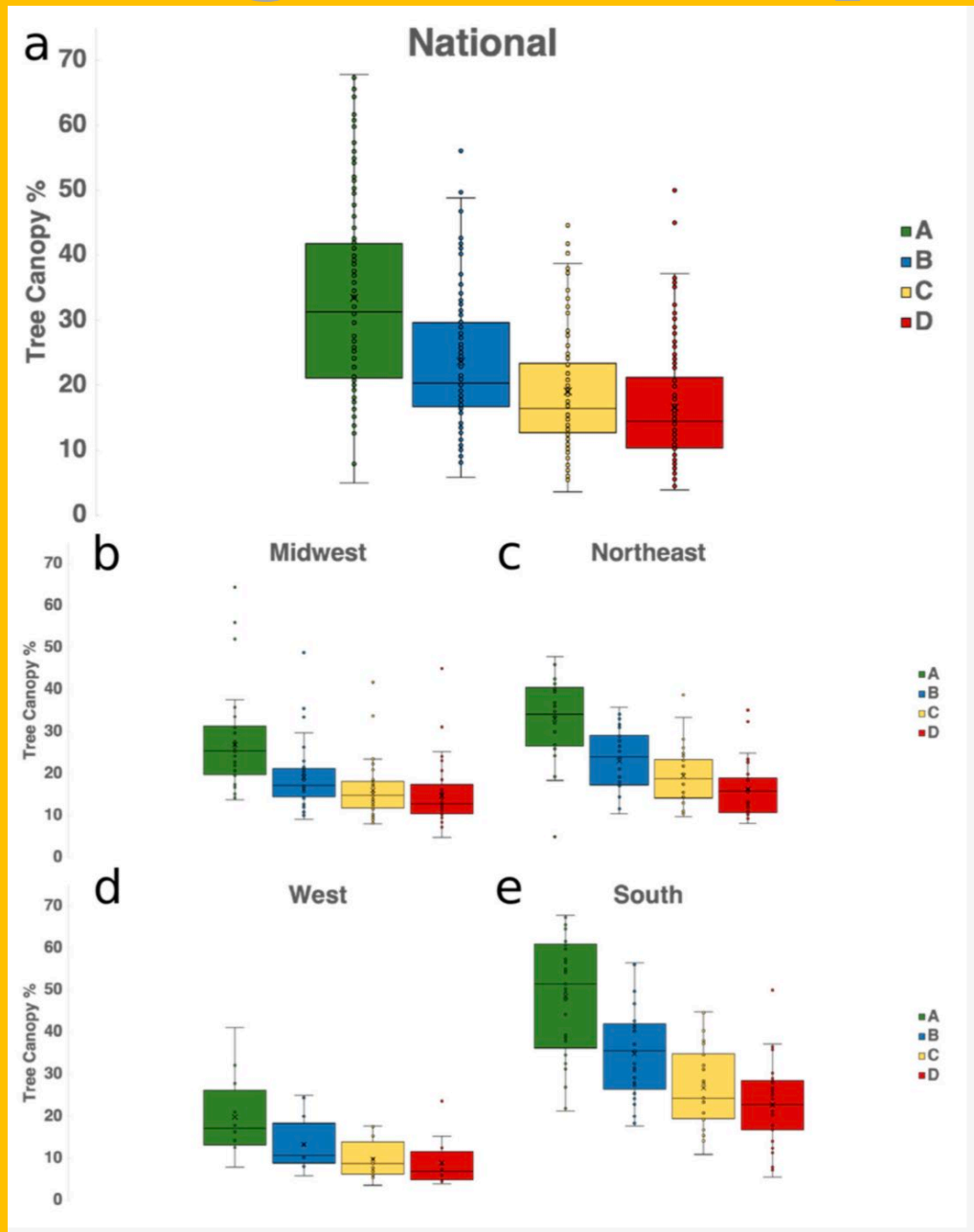
**White communities** are **more** likely to have Central Air Conditioning, while communities with **children** are **less** likely.

**Asian and Elderly Communities** are **less** likely to have access to heat refuges.



# Redlining and Green Space



# ENVIRONMENTAL HEALTH IMPACTS

## WEATHERING EFFECT

- Dioxins (PCBs)
  - Carcinogenic (Cancer Causing)
- Lead
  - Neurotoxin (Cognition, Behavior & Development)
- Oxides (Carbon, Nitrogen & Sulfur)
  - Highly Lethal/Fatal (Respiratory Arrest)
- Ozone/Particulates
  - Chronic Respiratory Illnesses (Asthma)







Veteran musician Calvin Walker (left) is one of the narrators of The Albina Soul Walk. Paul Knauls (right) owned the legendary Portland jazz and R&B venue the Cotton Club.

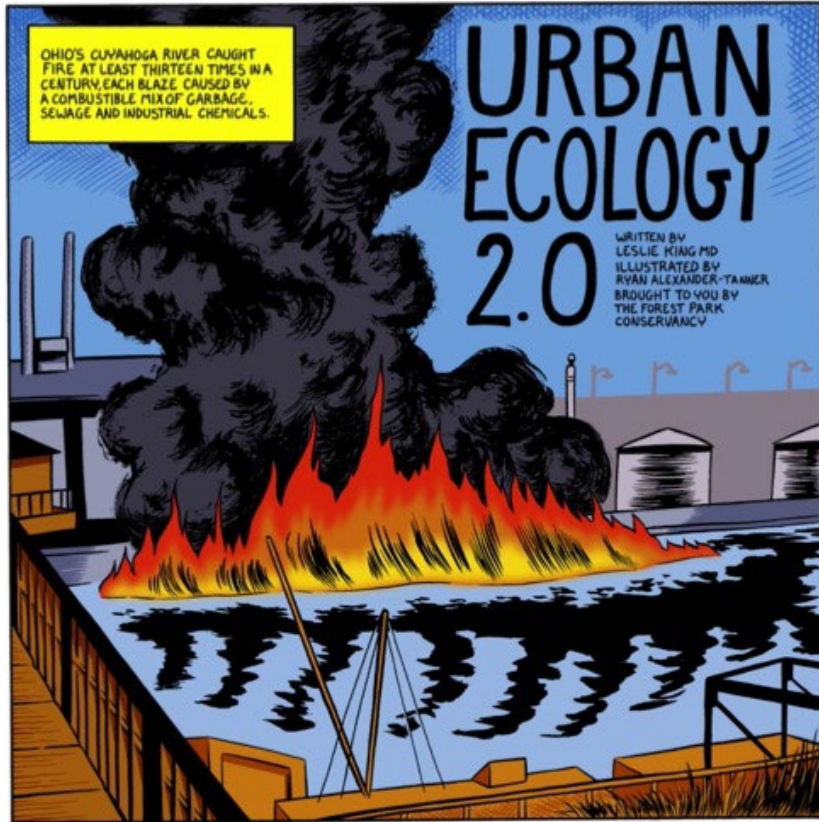


# Albina One

Rental Under Construction

Albina Vision Trust and Edlen & Co. will develop 94-units of family-focused affordable housing with priority to displaced or longtime residents of North/Northeast Portland under the City's Preference Policy.





OHIO'S CUYAHOGA RIVER CAUGHT FIRE AT LEAST THIRTEEN TIMES IN A CENTURY, EACH BLAZE CAUSED BY A COMBUSTIBLE MIX OF GARBAGE, SEWAGE AND INDUSTRIAL CHEMICALS.

# URBAN ECOLOGY 2.0

WRITTEN BY  
LESLIE KING MD  
ILLUSTRATED BY  
RYAN ALEXANDER-TAMMER  
BROUGHT TO YOU BY  
THE FOREST PARK CONSERVANCY

SINCE THE JUNE 22, 1969 FIRE LASTED ONLY 20 MINUTES, IT GARNERED LITTLE ATTENTION UNTIL THE BURN WAS COVERED AS NATIONAL NEWS BY TIME MAGAZINE.

THE ENVIRONMENTAL ACTIVISM GALVANIZED BY THIS CATASTROPHE LED TO THE FOUNDING OF EARTH DAY ON APRIL 22, 1970. THE EPA, CLEAN AIR ACT AND CLEAN WATER ACT SOON FOLLOWED, AS DID THE EMERGENCE OF A SUB-DISCIPLINE OF ECOLOGY, URBAN ECOLOGY.



THE SHIPYARDS, STEEL MILLS AND RAILROADS THAT BROUGHT BLACKS TO ALBINA HEAVILY POLLUTED THE WILLAMETTE RIVER. THE LOWER PORTION DECLARED THE PORTLAND HARBOR SUPERFUND SITE IN 2000. THE INTERSTATE HIGHWAYS FURTHER CONTRIBUTE TO THE NEIGHBORHOOD'S TOXIC ENVIRONMENT.



FOREST PARK CONTAINS OVER HALF OF PORTLAND'S 10,000 ACRES OF GREEN SPACE, WHILE ALBINA HAS VERY FEW GREEN SPOTS. THIS DISPARITY RENDERS THE NEIGHBORHOOD AN URBAN HEAT ISLAND, AVERAGING 7 DEGREES HOTTER THAN THE REST OF THE CITY.



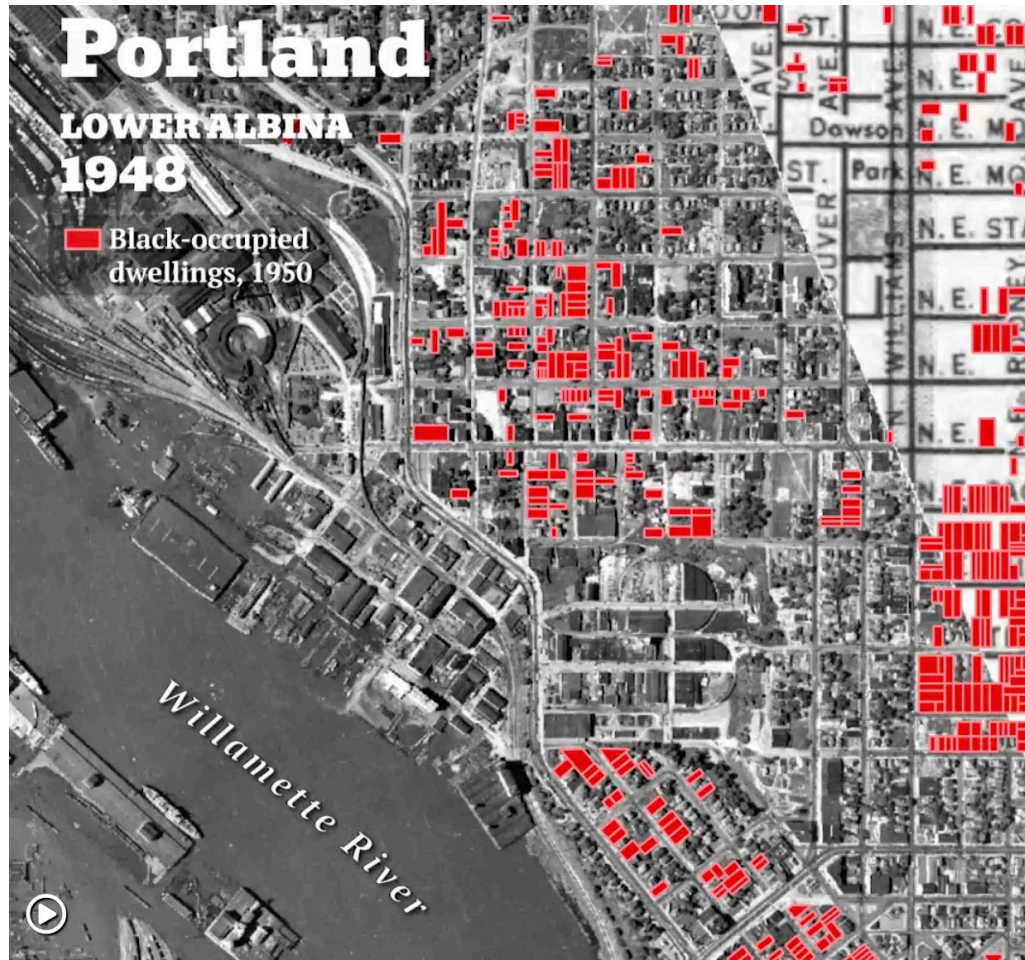
THE INFLATION REDUCTION ACT OF 2022 INCLUDES \$1.5 BILLION FOR THE U.S. FOREST SERVICE'S URBAN AND COMMUNITY FORESTRY PROGRAM. AGENCY LEADERS PLAN A COMPETITIVE GRANT PROCESS TO ALLOT FUNDING TO ORGANIZATIONS SUCH AS THE ALBINA VISION TRUST, A NONPROFIT DEDICATED TO INCREASING URBAN GREEN SPACE.



THIS PROJECT ILLUSTRATES THE CRUCIAL ROLE OF ENVIRONMENTAL JUSTICE WITHIN URBAN ECOLOGY 2.0. RACIST PRACTICES RENDERED AN ENTIRE NEIGHBORHOOD DEVOID OF THE NATURAL WORLD. RESTORING ALBINA'S BLIGHTED HABITAT FOSTERS EQUITY AND BENEFITS BOTH HUMANS AND NATURE.



## Albina District Time Lapse



## Albina District Storymap



# ALBINA EJ CONCEPTS

Homelessness

Redlining

Poverty

Zoning

Systemic Racism

Racial Covenants

Intergenerational Trauma (Epigenetics)

Oregon Constitution's "Lash Laws"

Deaths of Despair

Urban Greenspace

Chronic Health Issues

Superfund Site

Asthma Alleys/Air Quality (Toxins)

Home Ownership

Heat Islands

Education Levels

---

---

---

---

---

---

---

---





# Stubborn Twigs



## **Stubborn Twigs**

The Oregon Nikkei

Dr. Leslie P. King, J.E.D.I. Master

October 31, 2024