



Columbia Land Trust

CONSERVING THE NATURE YOU LOVE



Forest Carbon Pilot Project

Ian Sinks, Stewardship Director

Project Goals

1. **FOREST MANGEMENT:**
Change forest practices and sequester carbon: suite of conservation benefits
2. **CLIMATE MITIGATION:** Create verified, registered carbon credits from PNW Forests
3. **REVENUE:** Re-invest into additional high priority forest conservation



Pine Creek, Skamania County, Washington



Pilot Project

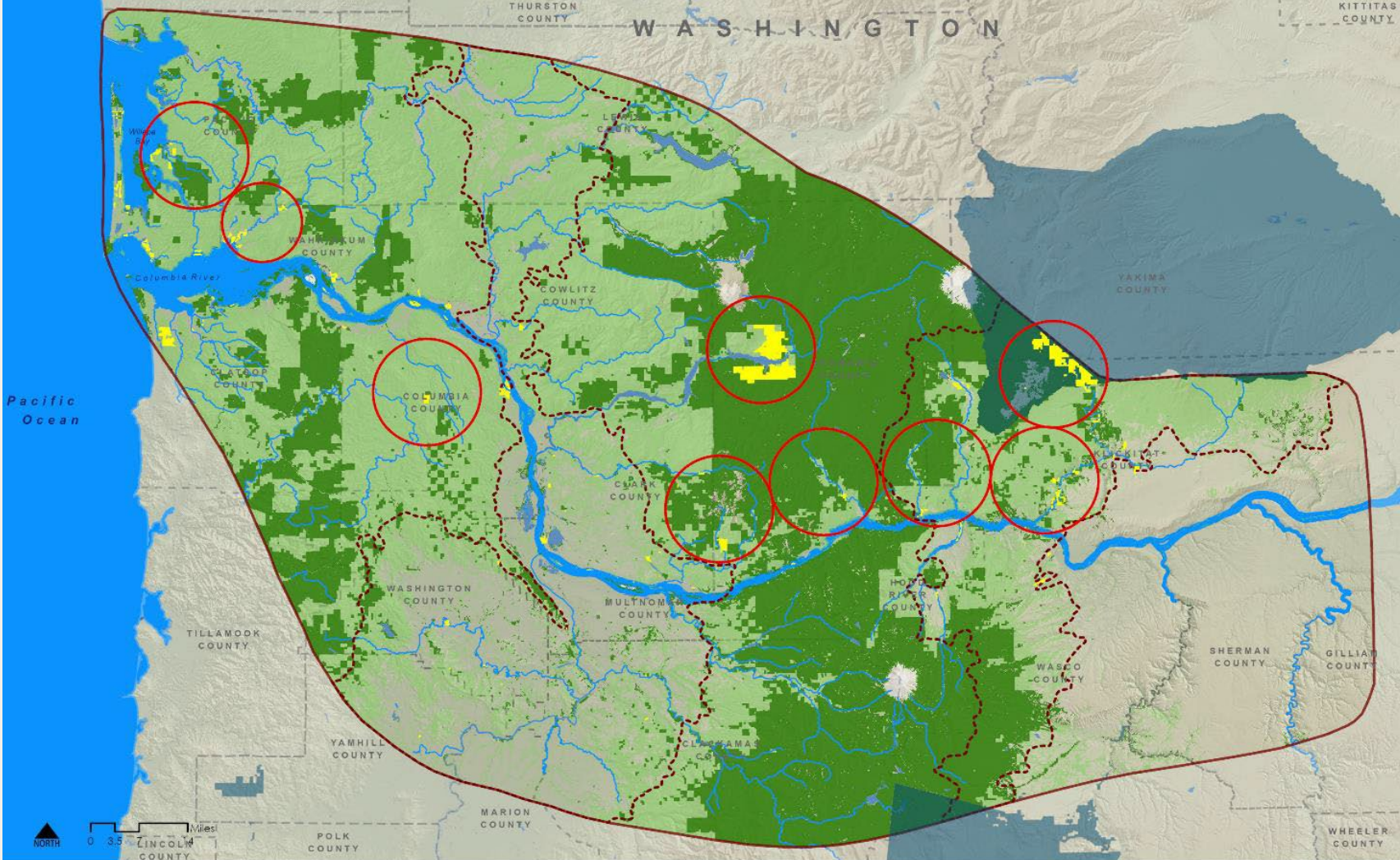
13,000 acres enrolled in the American Carbon Registry.

40 Year registry period.

Contracted with Anew to conduct due diligence, verification, and marketing. Contract can be renewed in 12 years.

Initial credits included pre-sales through the Land Trust and limits on credit purchasers.

Board of Directors commitment for use of funds: 90% reinvested directly into additional forest conservation.



Climate Action Plan Forest Conservation

Columbia Land Trust Service Area

- Yellow square: Columbia Land Trust Conserved Lands
- Green square: Public Forest*
- Blue square: Tribal Lands
- Light green square: Private Forest*

*Forested lands defined by GNN Structure and Species Map
Data Sources: GNN, PAD 14



Credit Calculations and sales are based on:

- Standard forest practices and regulatory limits
- Land encumbrances
- Inventory – Baseline above standard practice and growth over 40-year timeline
- Additional benefits provided by credits



Conservation oriented Forestry Built into Carbon Calculations



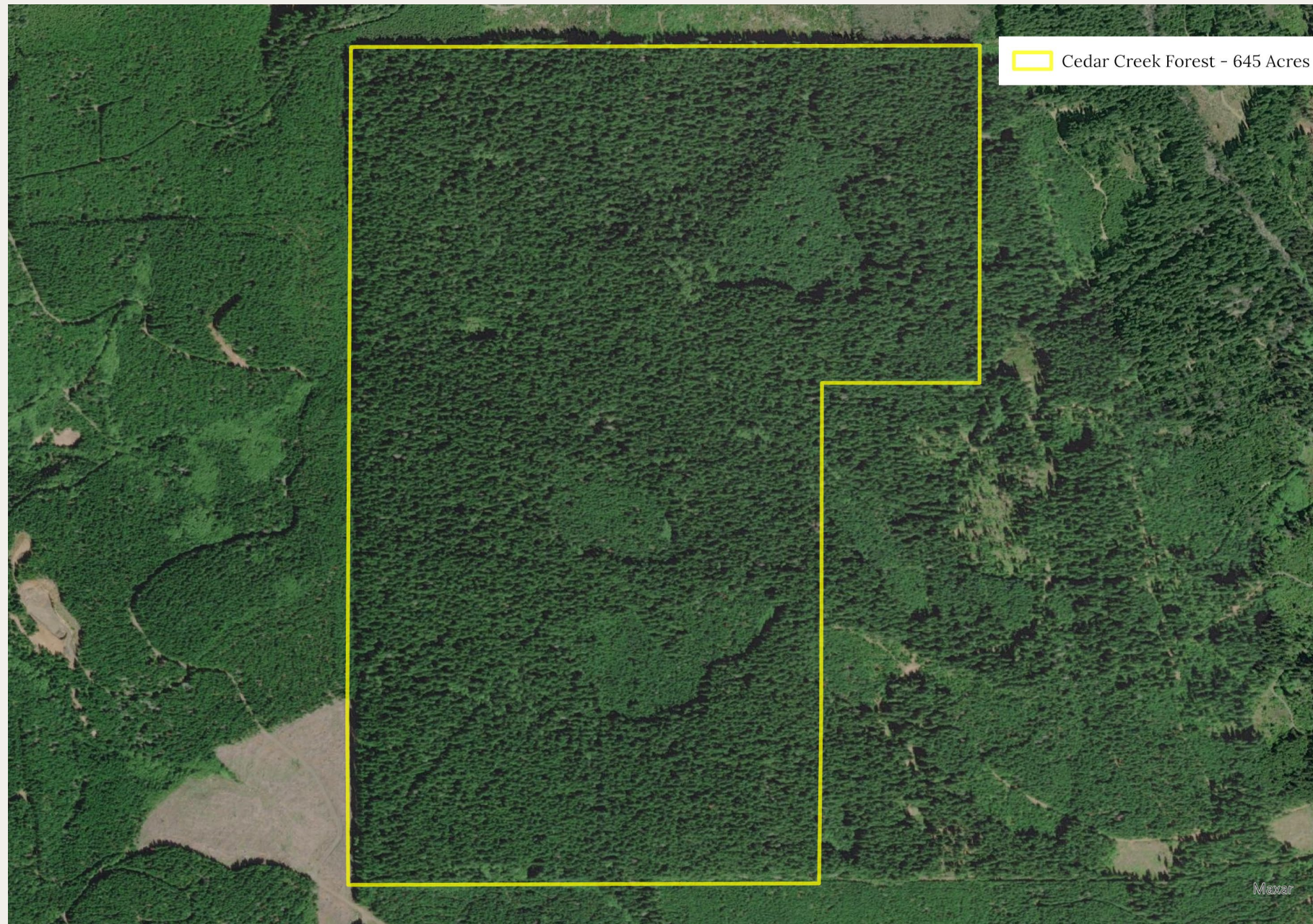
Cedar Creek

Clatskanie County, Oregon

- Carbon removals
- 640 acres
- 80 plus years old
- Undisturbed
- No commercial harvest
- 478 CO₂e/acre



Swainson's thrush



Pine Creek East

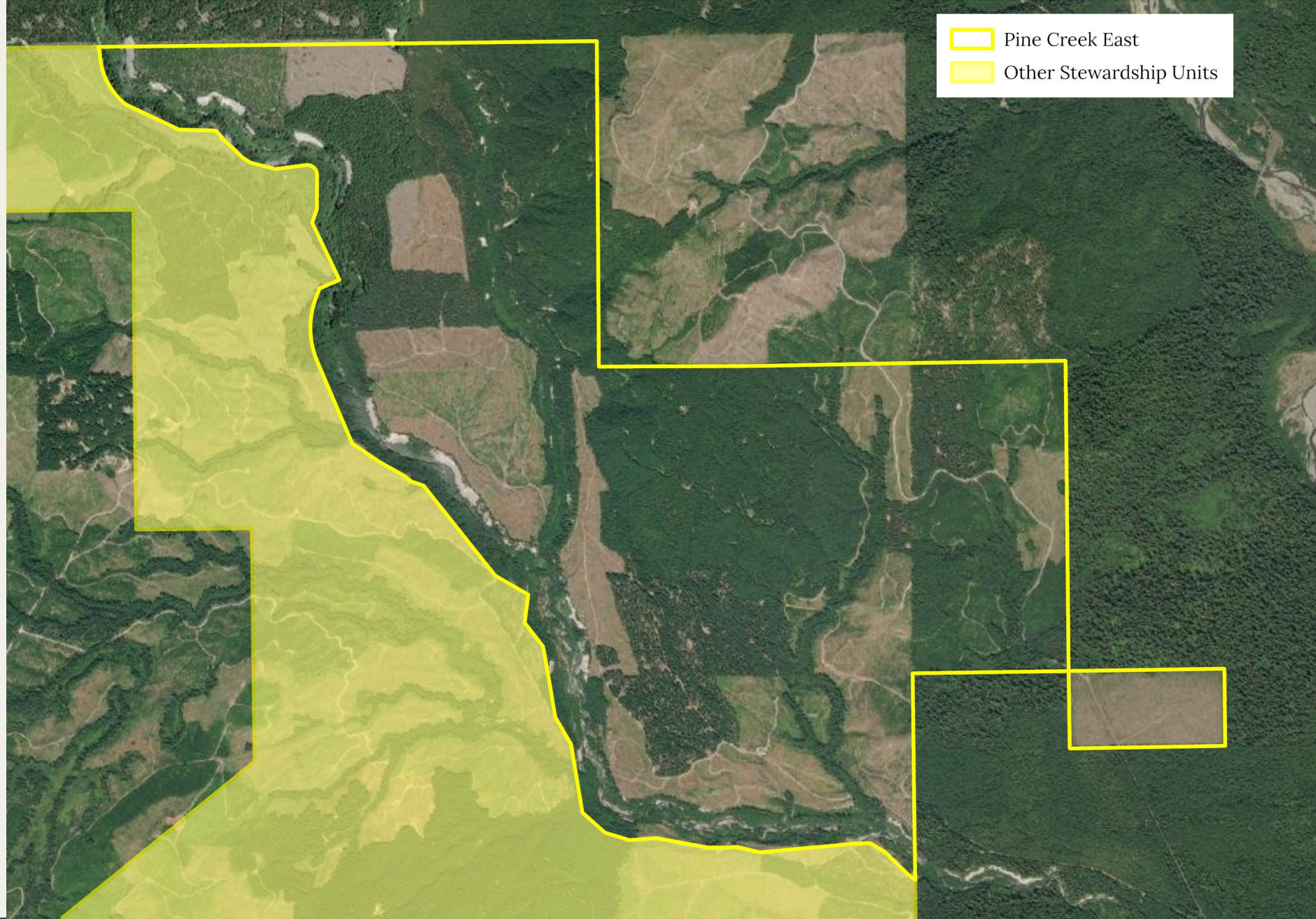
Mt. St. Helens

Skamania County, Washington

- Conservation
- 2,400 acres
- Encumbered
- Conservation forestry
- 150 CO₂e



Pacific wren



Klickitat Canyon

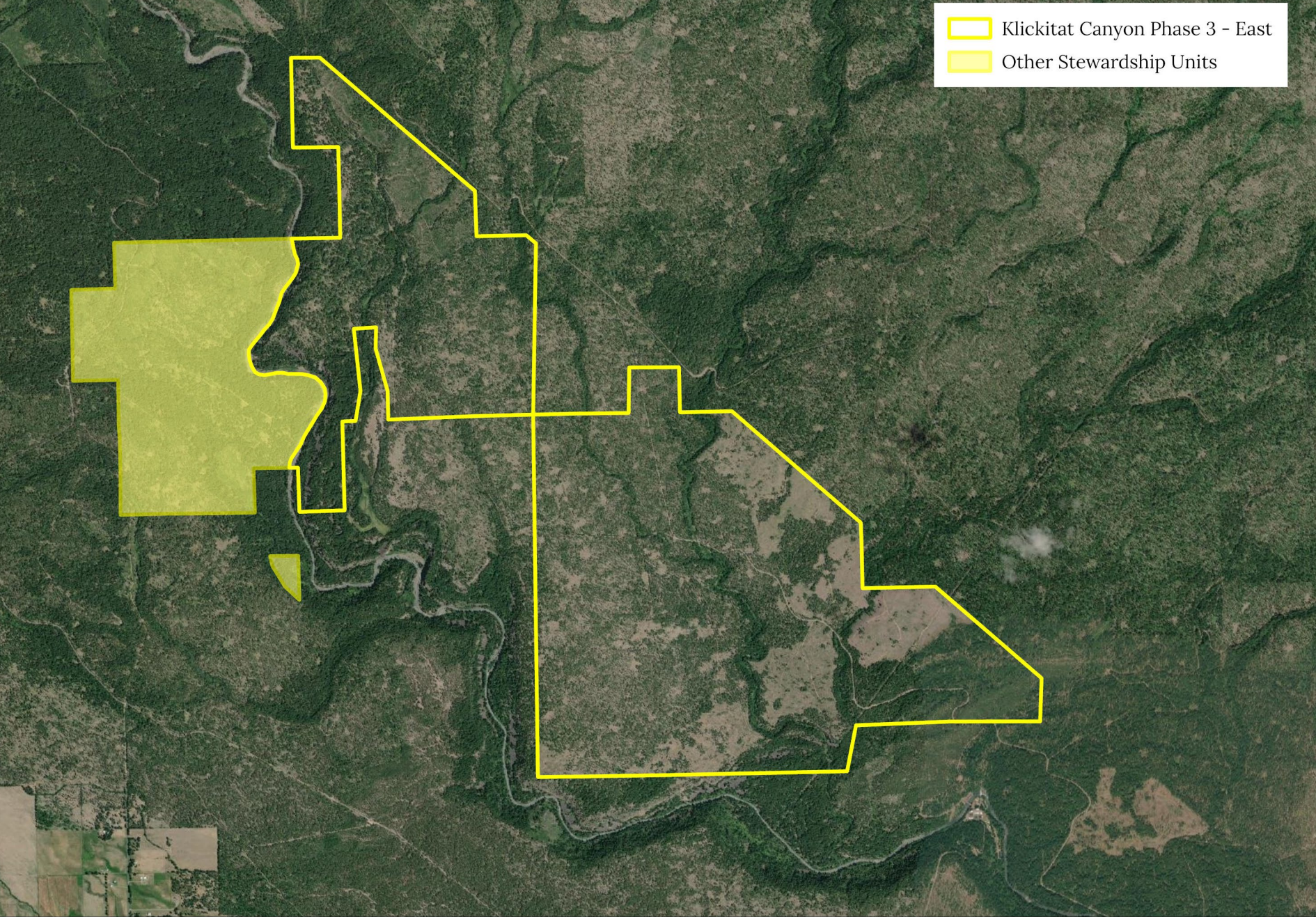
Phase 3

Yakama County, Washington

- Carbon removals
- 4,000 acres
- Harvested
- Different species
- Conservation forestry
- 99 CO₂e/acre



Wilson's warbler



 Klickitat Canyon Phase 3 - East
 Other Stewardship Units



Lessons Learned (So Far)

- Carbon verification process has integrity
- Process to receive funding is longer than anticipated, final credit amounts still being determined
- Having the right contract partner with a clear agreement is critical
- We continue to feel good about the pilot and its impact on climate – board commitment is critical
- Conservation oriented credits seem to have high market appeal and integrity



